

## TOISEN ASTEEN EPÄYHTÄLÖ

E1

$$x^2 - 6 < 0$$

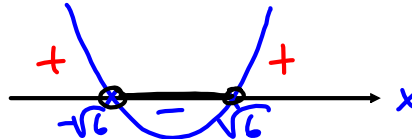
lasketaan nollakohtat:

$$x^2 - 6 = 0$$

$$x^2 = 6 \quad | \sqrt{\phantom{x}}$$

$$x = \pm \sqrt{6}$$

$$a > 0$$



$$V: -\sqrt{6} < x < \sqrt{6}$$

$$E2 \quad x^2 + x - 2 \geq 0$$

nollakohtat:

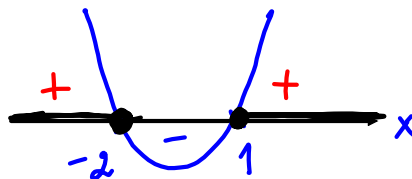
$$x^2 + x - 2 = 0$$

(solve)

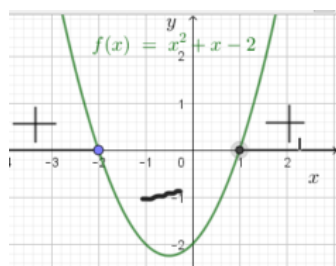
⋮

$$x = 1$$

$$\text{tai } x = -2$$



$$V: x \leq -2 \quad \text{tai} \quad x \geq 1$$



Geogebraalla  
tehty