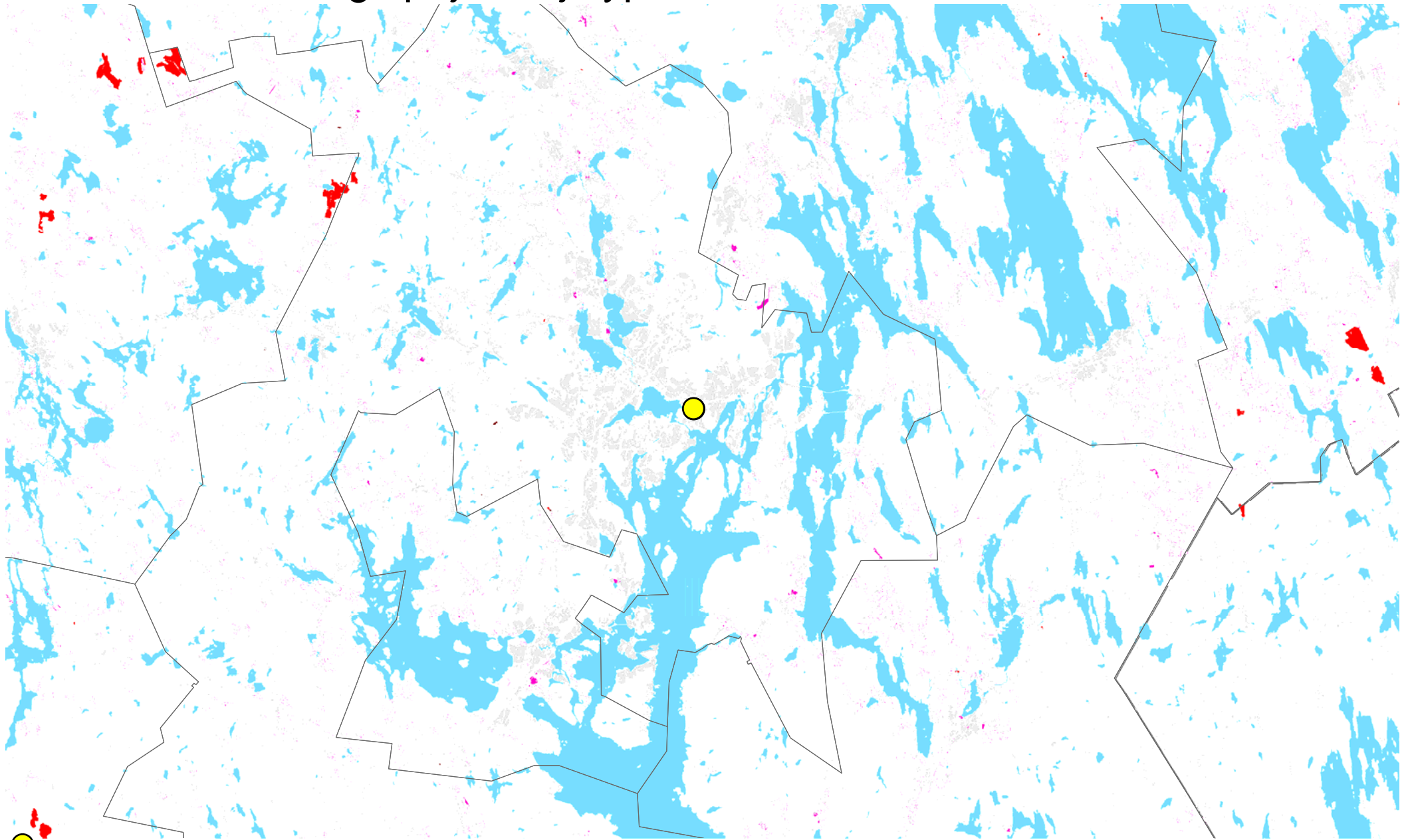








Energiapajun viljelypotentiaali Keski-Suomessa



-  Jyväskylän Energia Oy
-  Tilastoidut turvesuot vuodelta 2012
-  Vajaatuottoiset metsät kl 02 - 04 OMT/MT
-  Tuotannosta poistuneet viljelypellot vuodesta 2008 lähtien
-  Asutus
-  Kuntarajaus

0 5 10 Km 1:250 000



© Metsäkeskus, Syke, Tike

Liisa Hurskainen, 2014