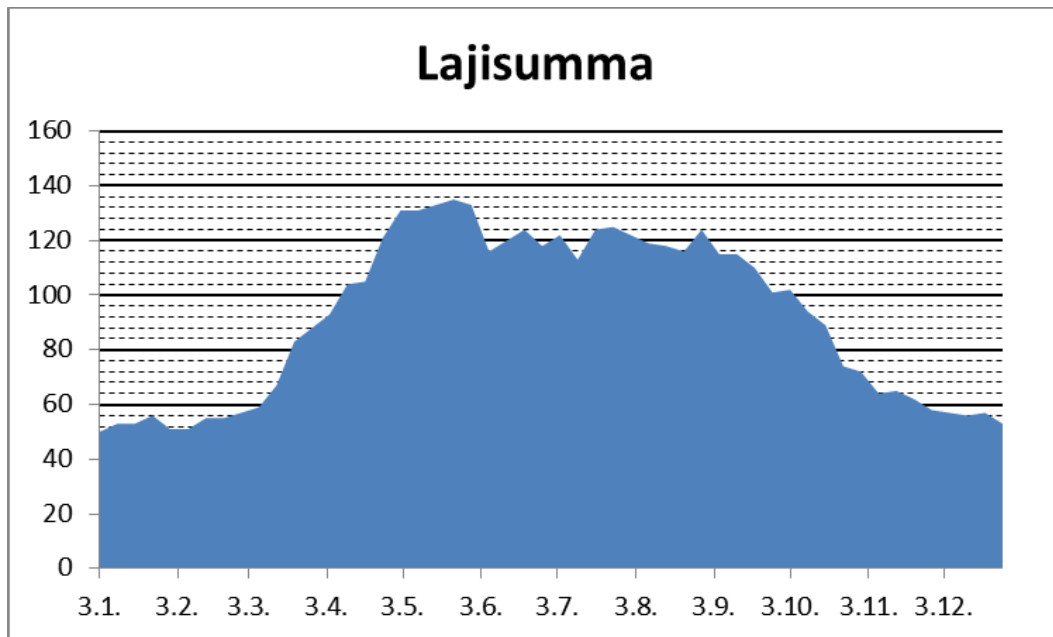


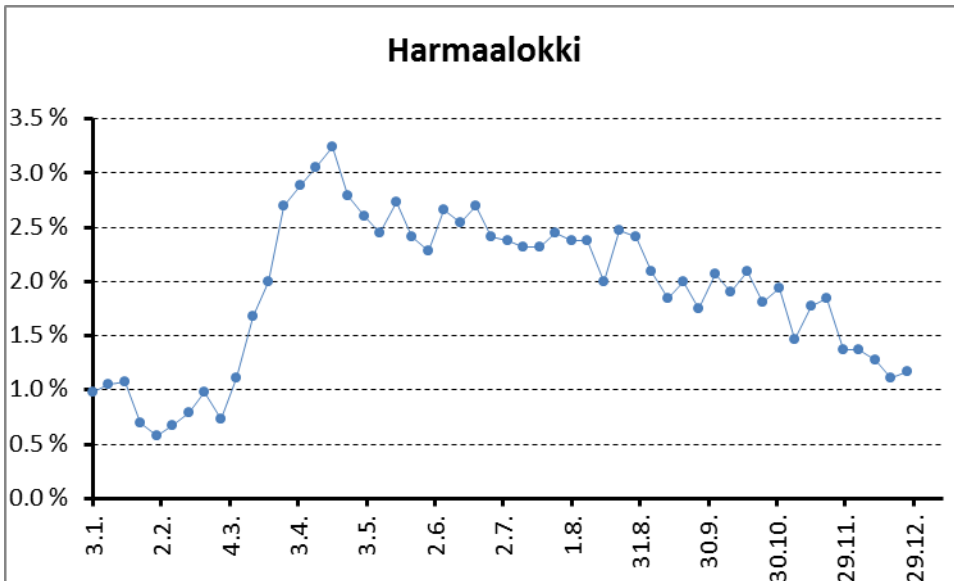
## Pihakisan lintulajien fenologiaa I: vuodenaikainen esiintyminen

Seuraavien sivujen kuvat on tehty yleisimmistä (>400 havaittua yksilöä) pihakisan kaikilla pihoilla vuosina 2000–2016 havaituista lajeista. Vuodenaikaisen esiintymisen vaihtelua kuvataan kunakin viikonvaihteena laskettujen yksilöiden osuutena kokonaisyksilömäärästä (kuvan oikealla puolella). Se kuvaa lähinnä kunkin lajin havaitsemisen todennäköisyyden vaihtelua. Kun havaintoaika on vakioitu puoleksi tunniksi edullisissa havainto-olosuhteissa, viikoittaiset havaittujen osuudet ovat vertailukelpoisia. Kuvaajissa ei ole varmaankaan mitään uutta niille, jotka tekevät ja kirjaavat havaintonsa tarkasti. Kevyemmin harrastaville ja aloitteleville kuvissa voi olla uutta asiaa.

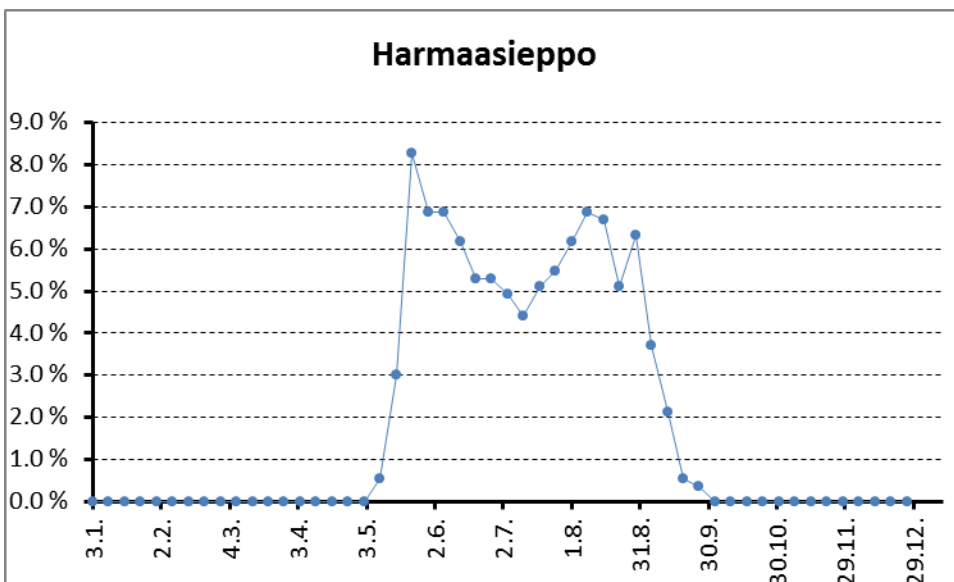


Suomessa havaittavien lajien määrä vaihtelee vuoden mittaan aika lailla. Alimmillaan lajeja on kisapihoilla vuoden alussa 50. Enimmillään lajeja on havaittu toukokuun kolmannessa viikonvaihteessa 135, jolloin pesimälajit ovat saapuneet ja pohjoiseen matkaavia läpimuuttajia on vielä matkalla. Tehokas havaintoaika on karkeasti  $0.5 \text{ h} * 9 \text{ pihaa} * 17 \text{ vuotta}$  eli n. 76 tuntia kussakin viikonvaihteessa. Minkään viikonvaihteen lajisumma ei ole lopullinen, mutta lisäkertymä on tällä havaintoajalla jo varsin hidasta.

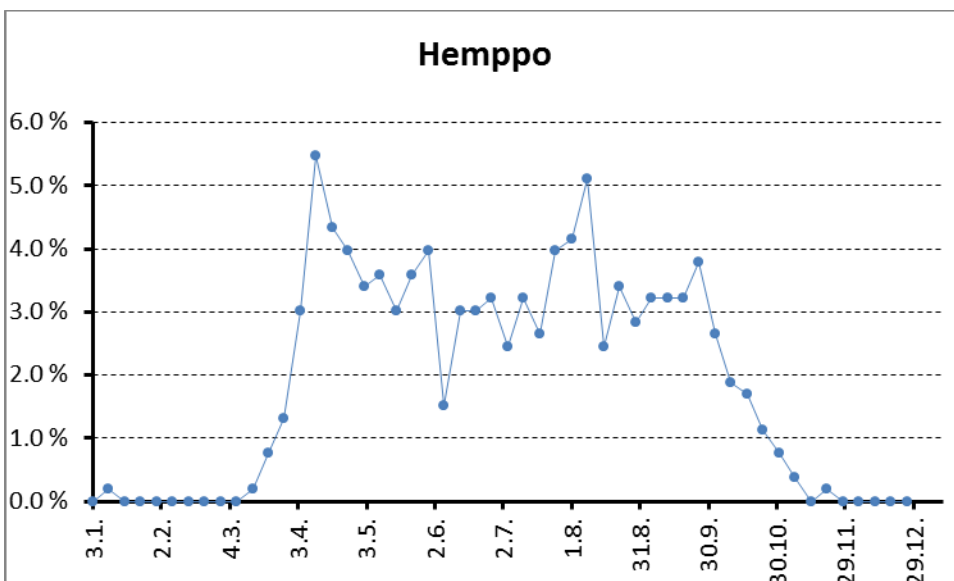




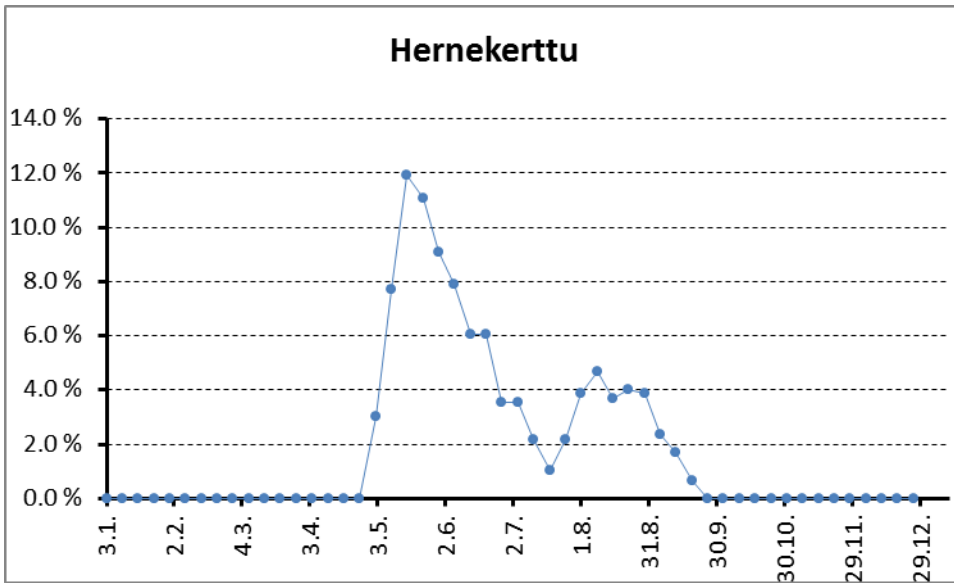
3150



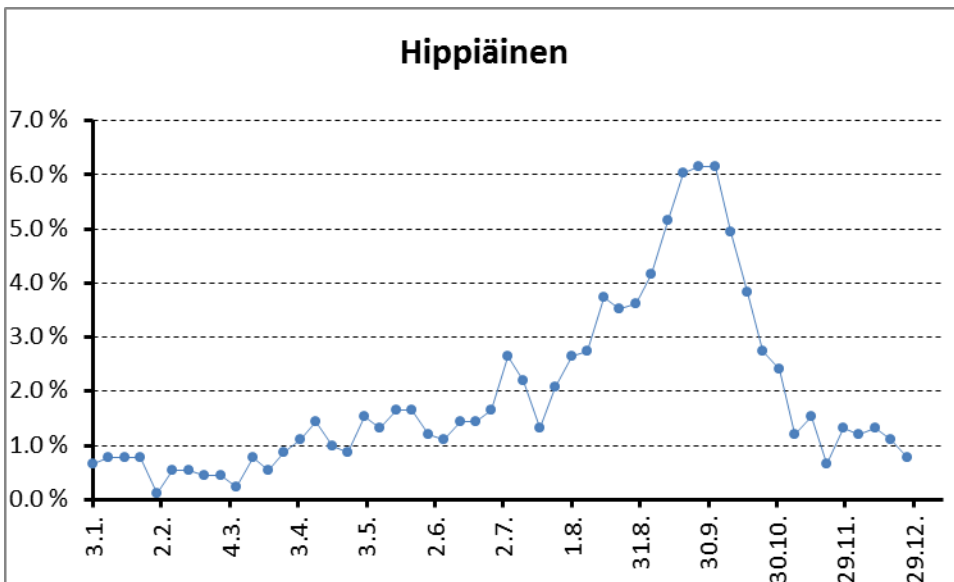
568



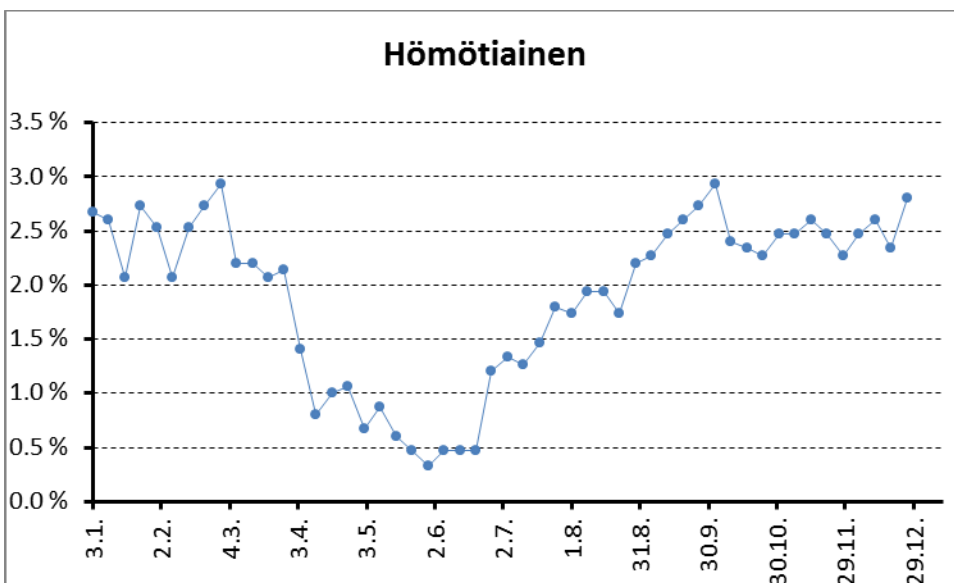
529



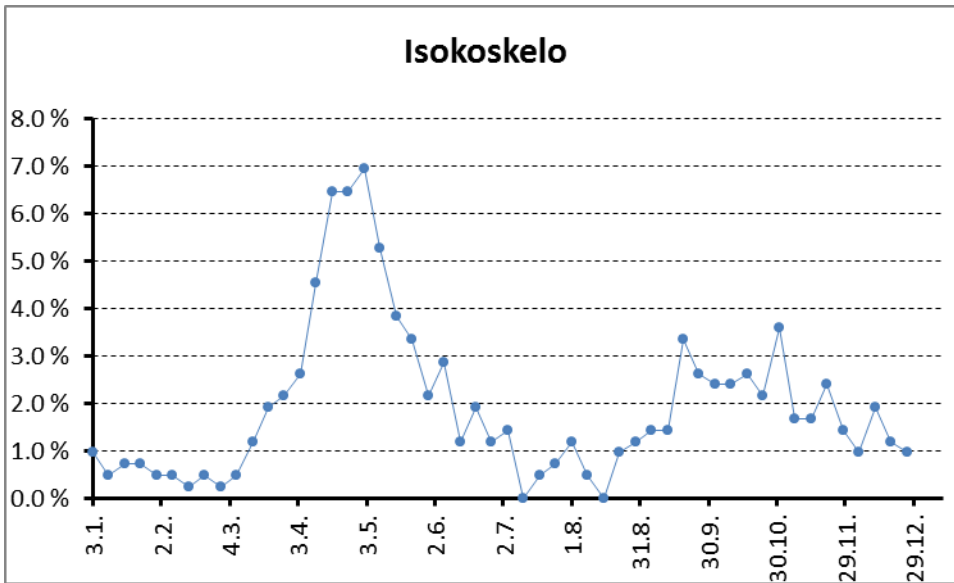
596



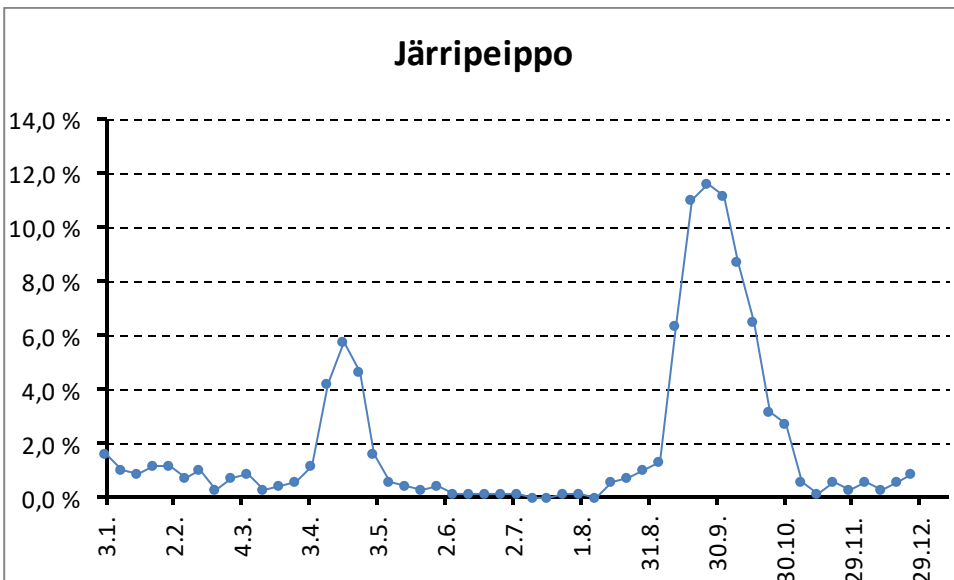
911



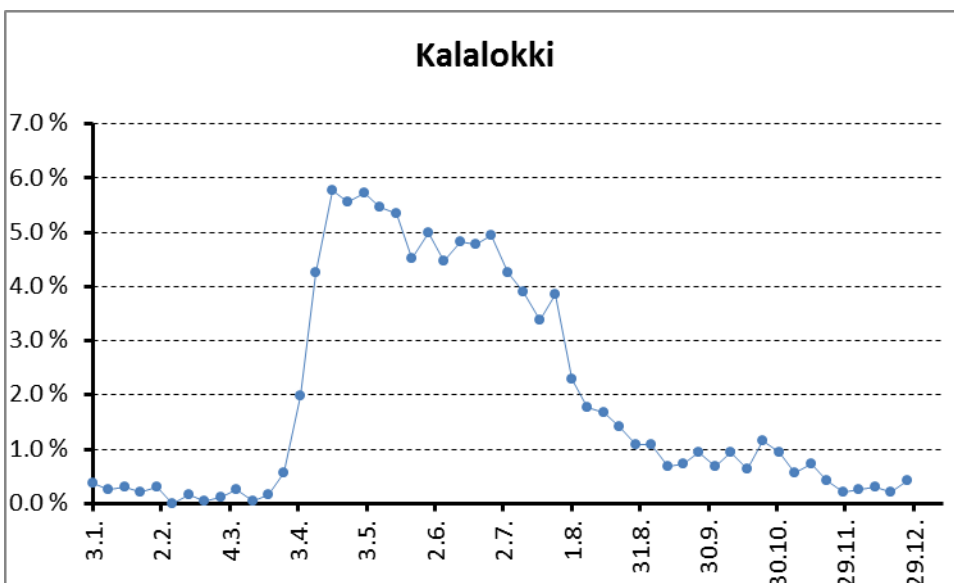
1498



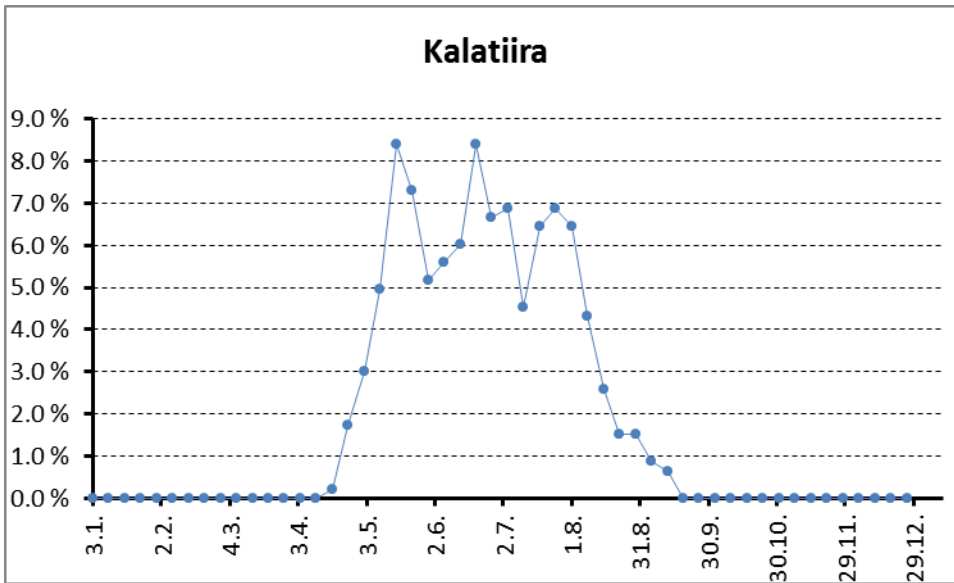
418



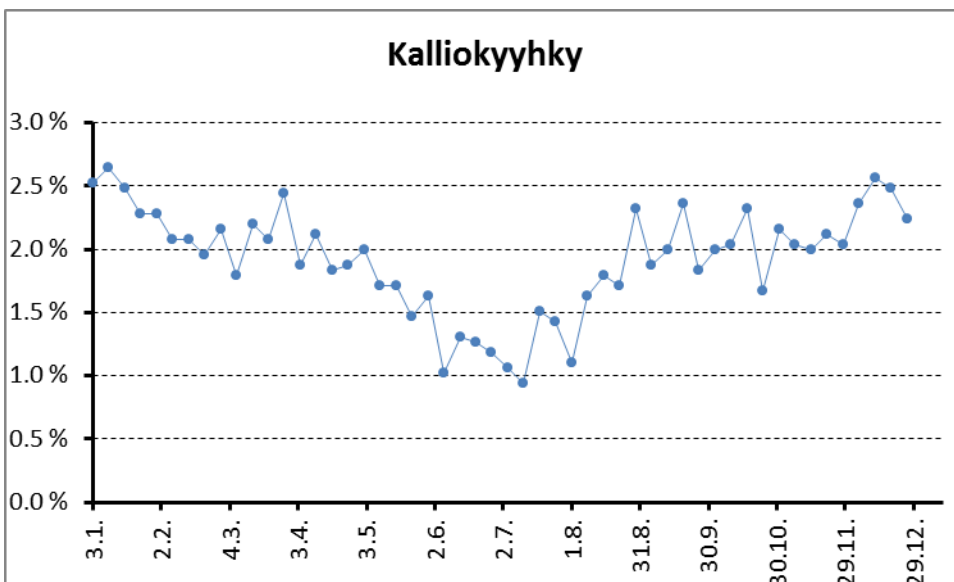
691



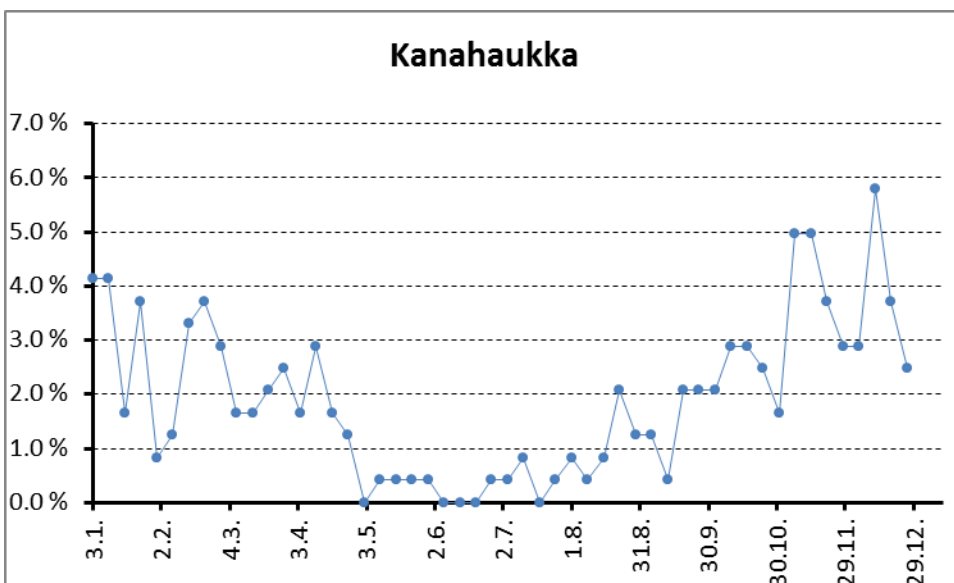
1924



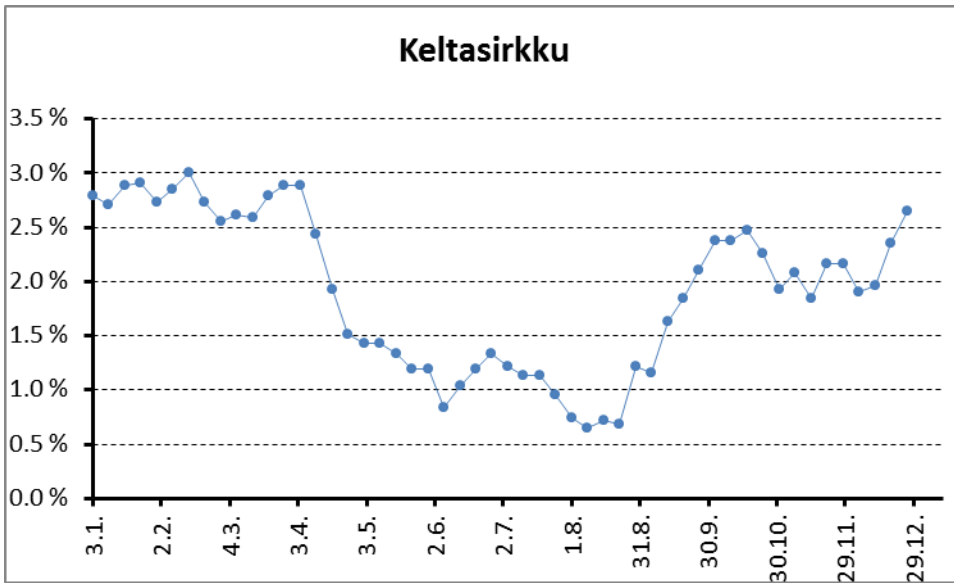
465



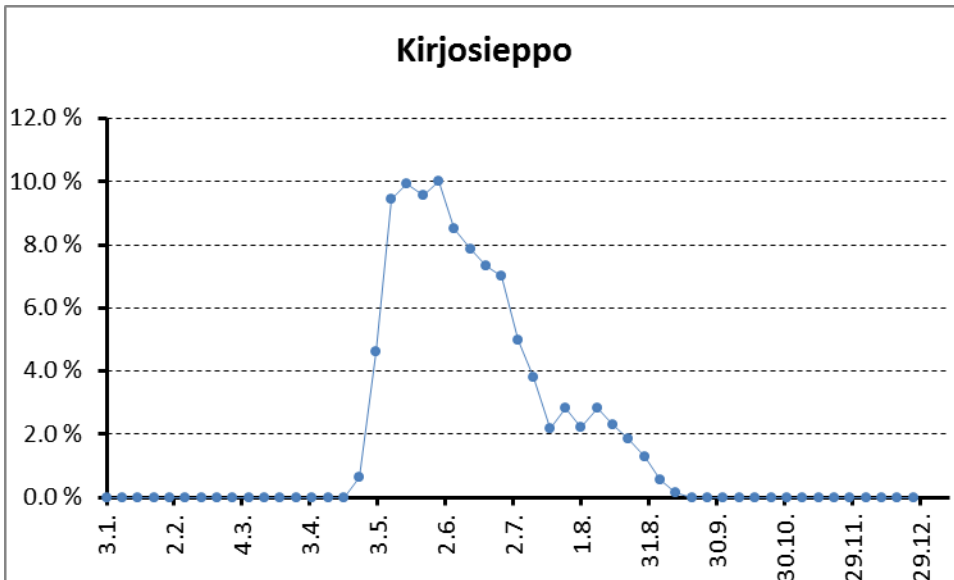
2457



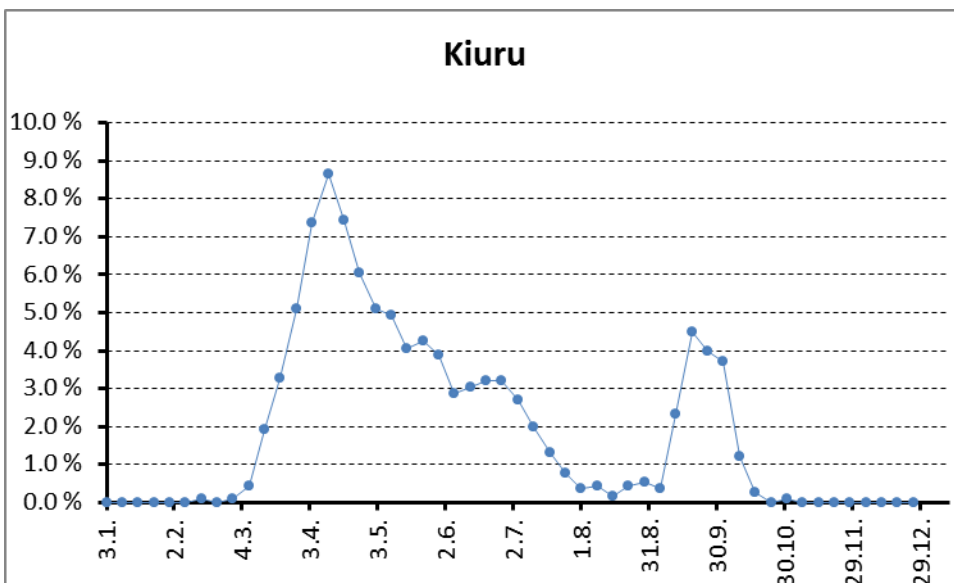
242



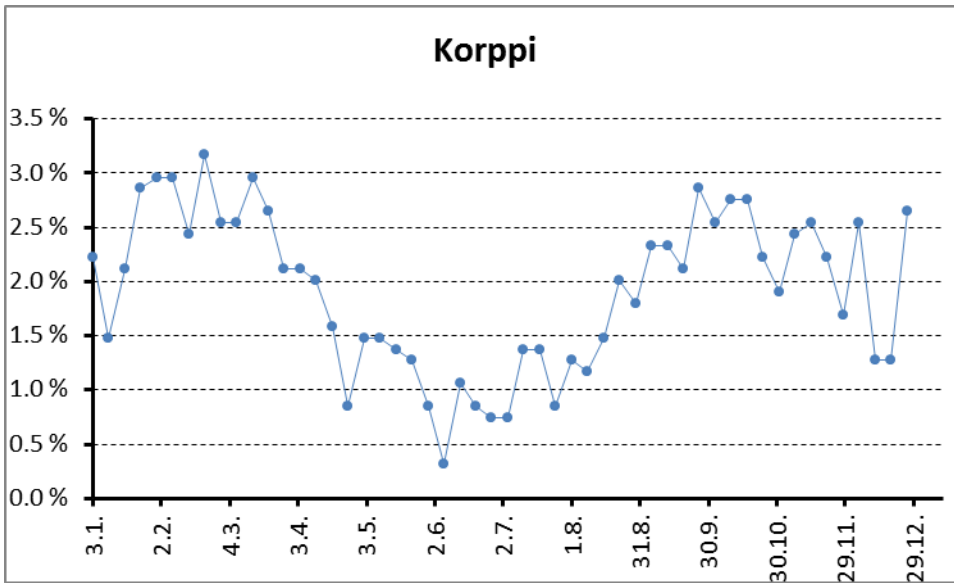
3365



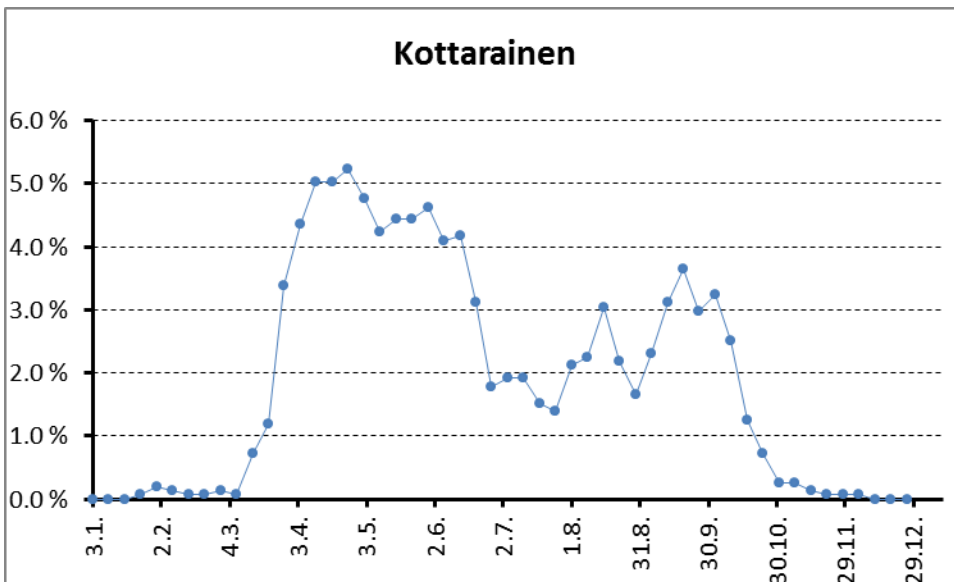
1387



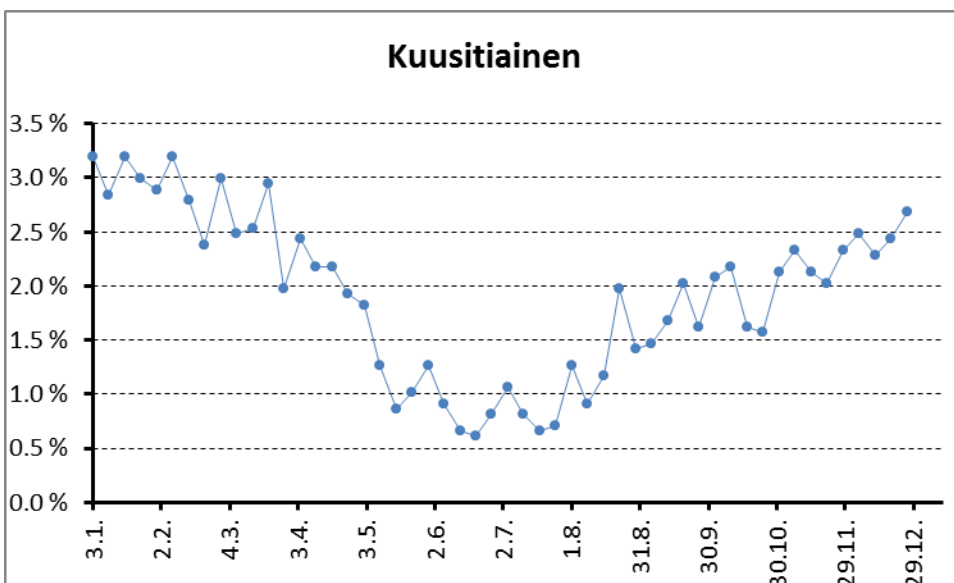
1156



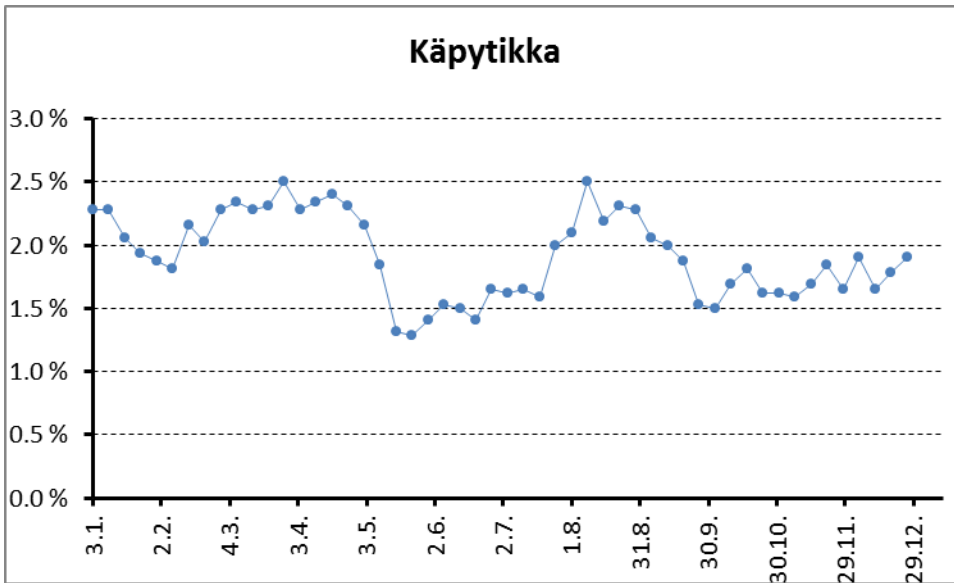
945



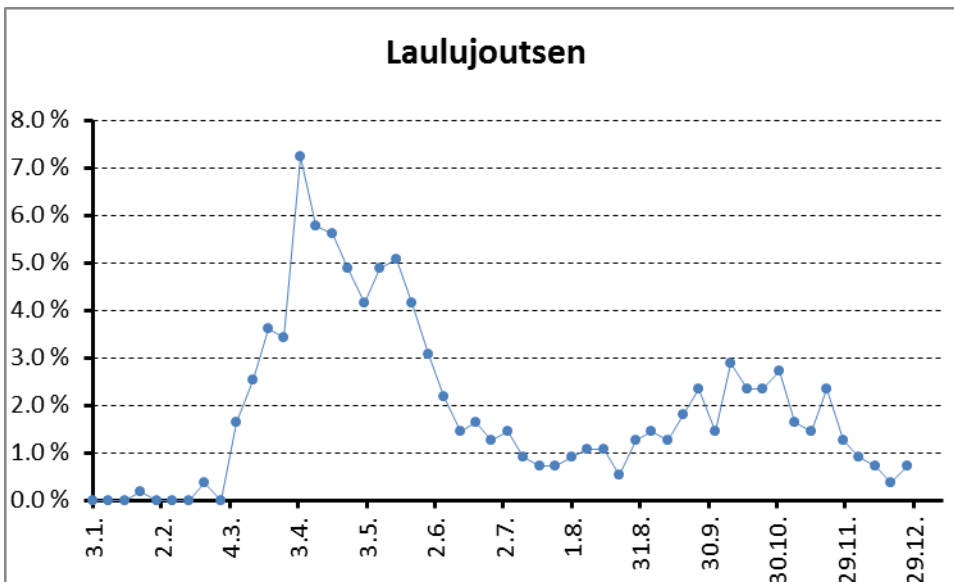
1511



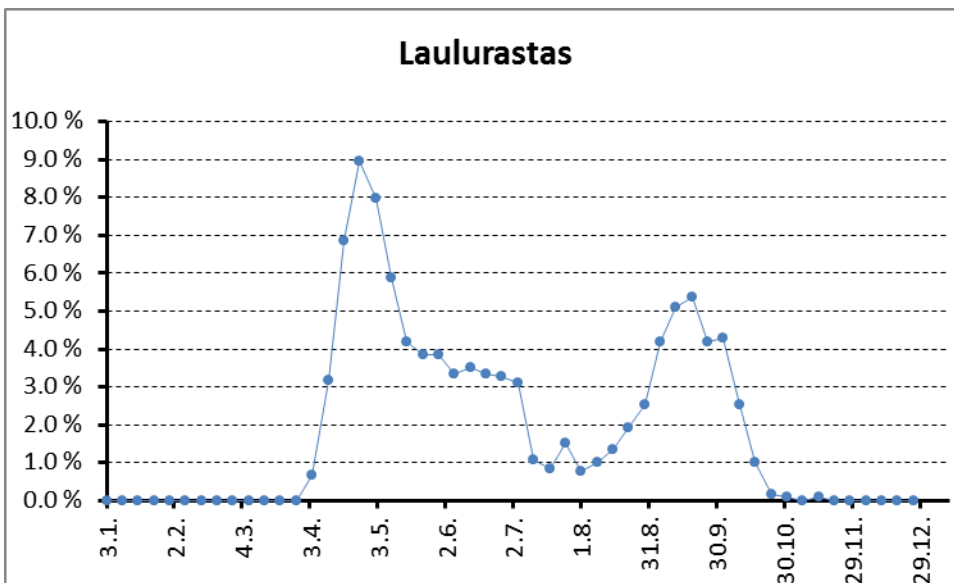
1973



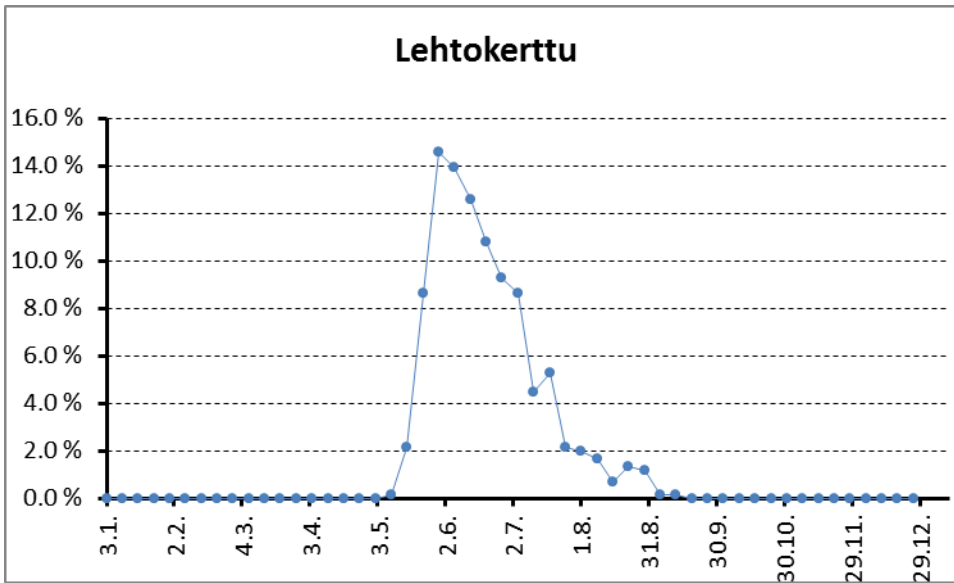
3200



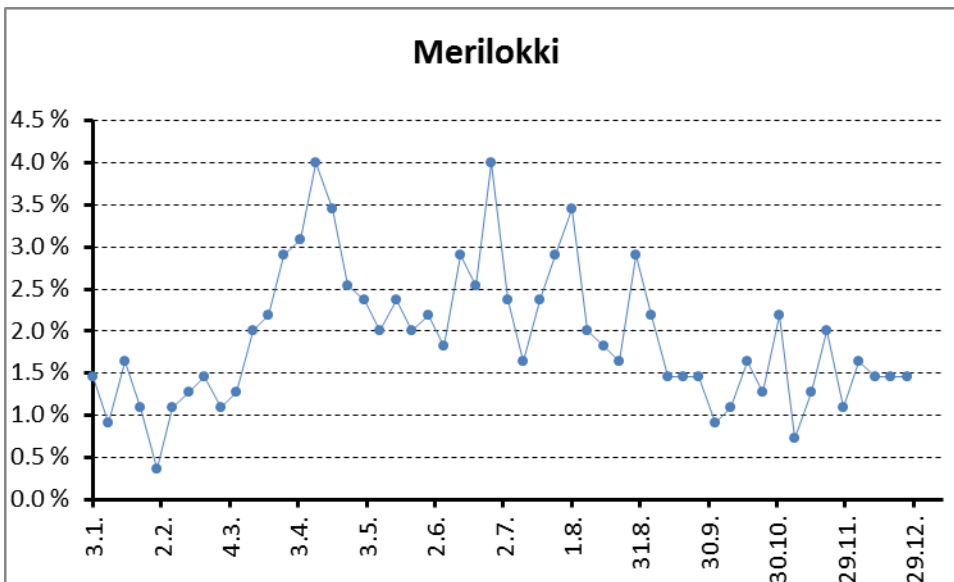
552



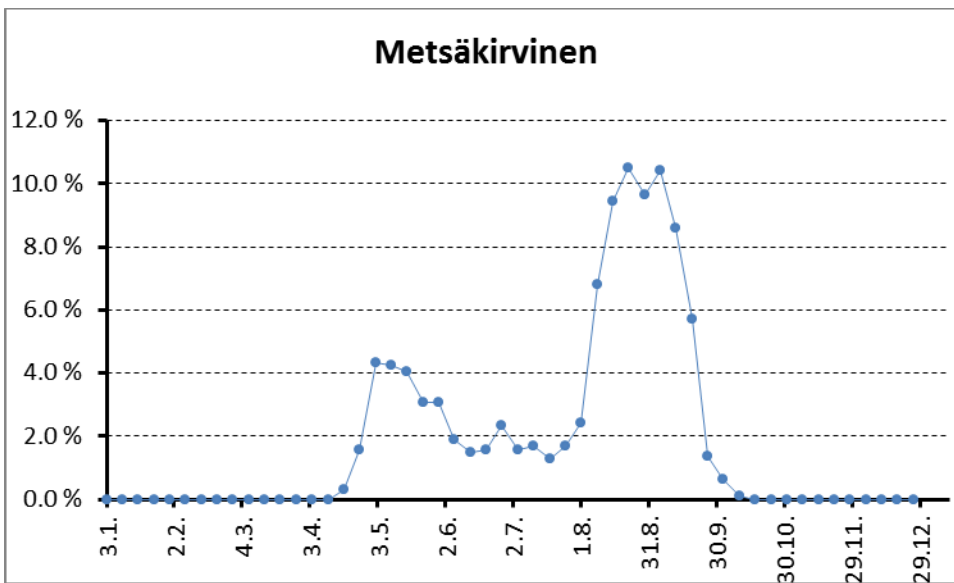
1193



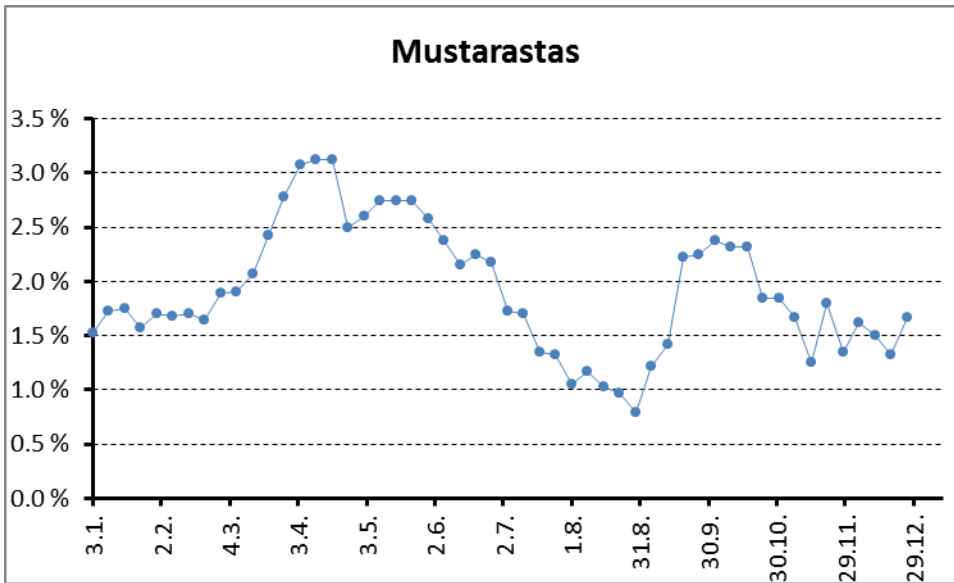
602



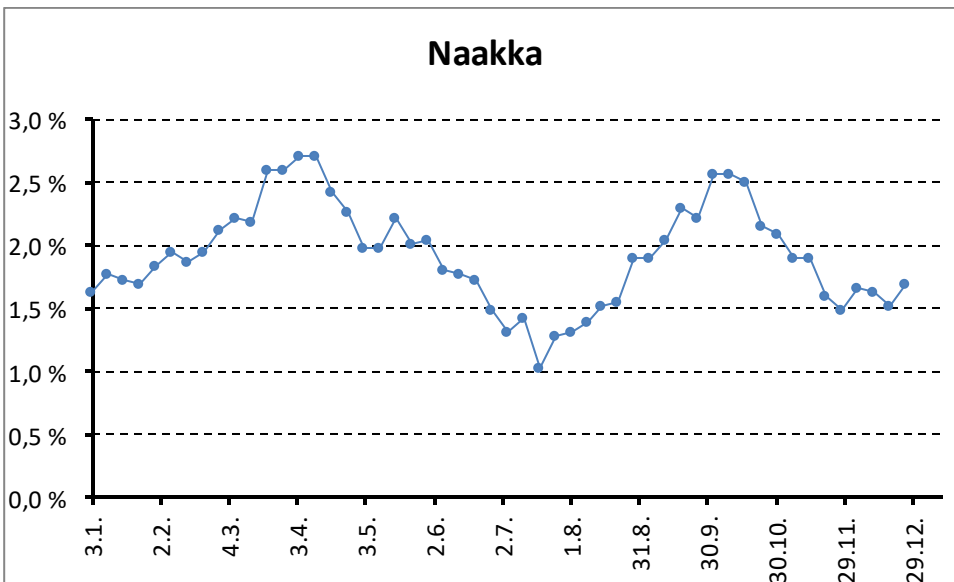
550



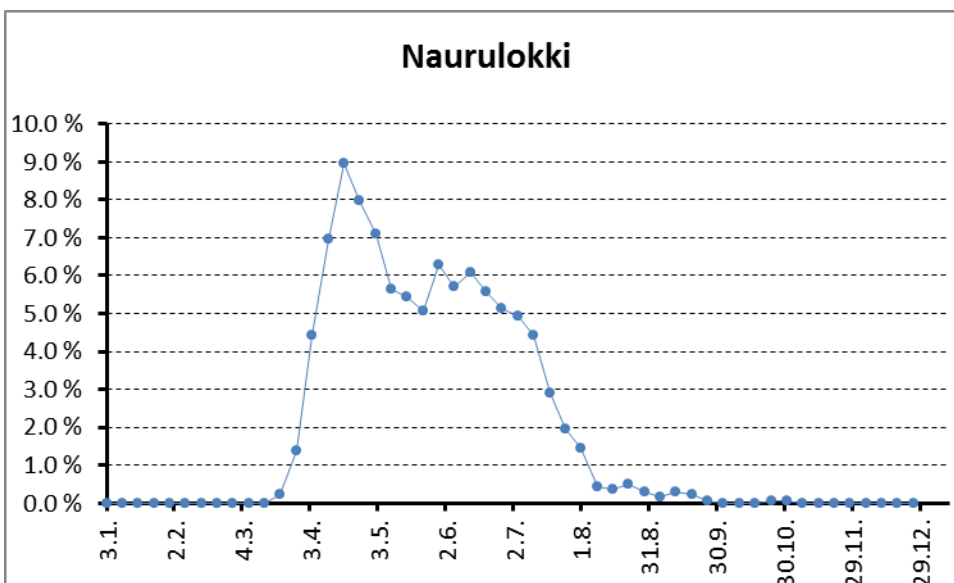
942



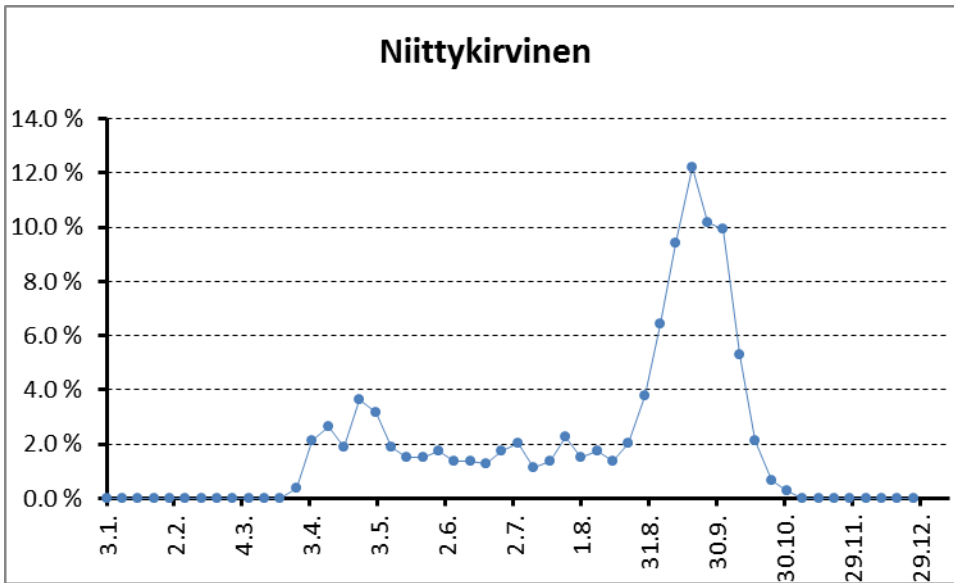
4455



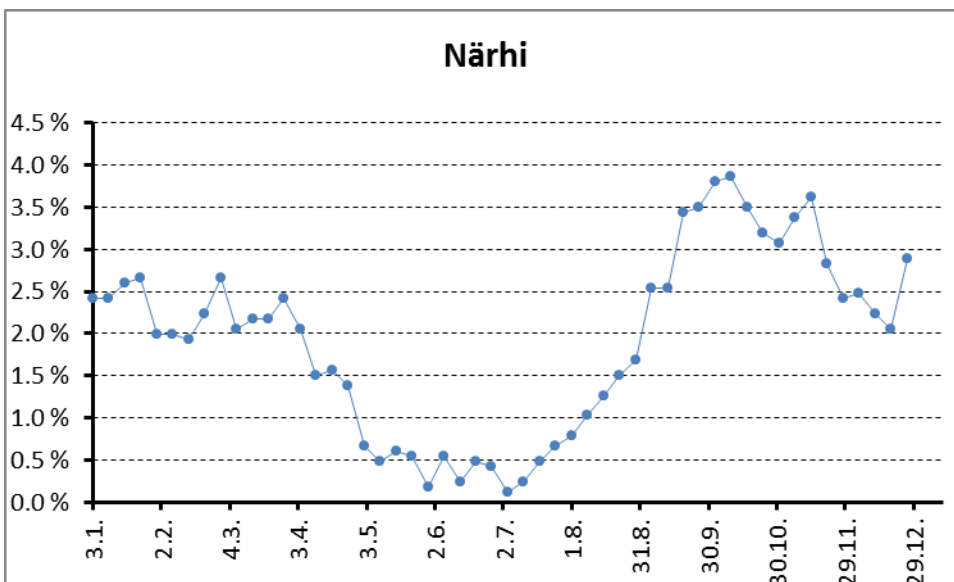
3433



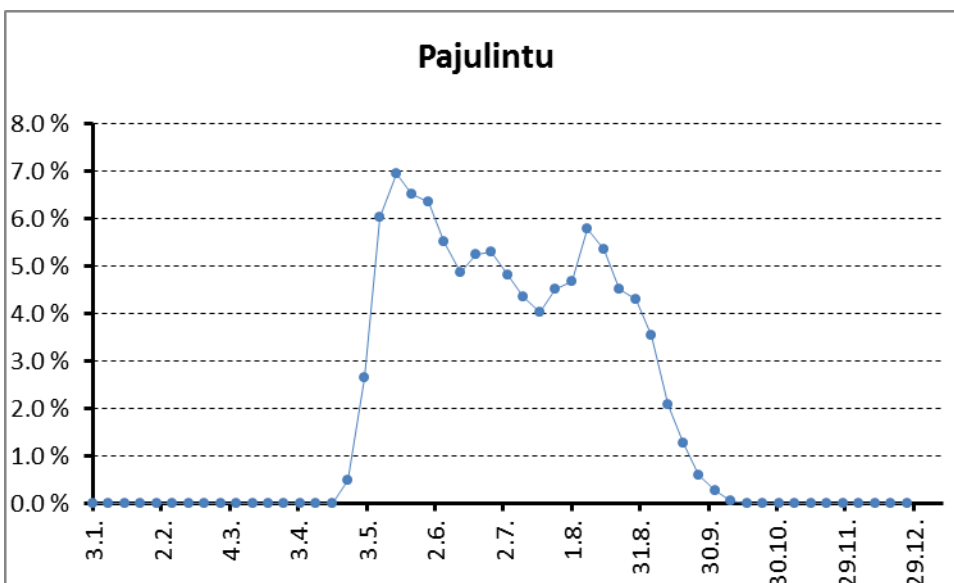
1382



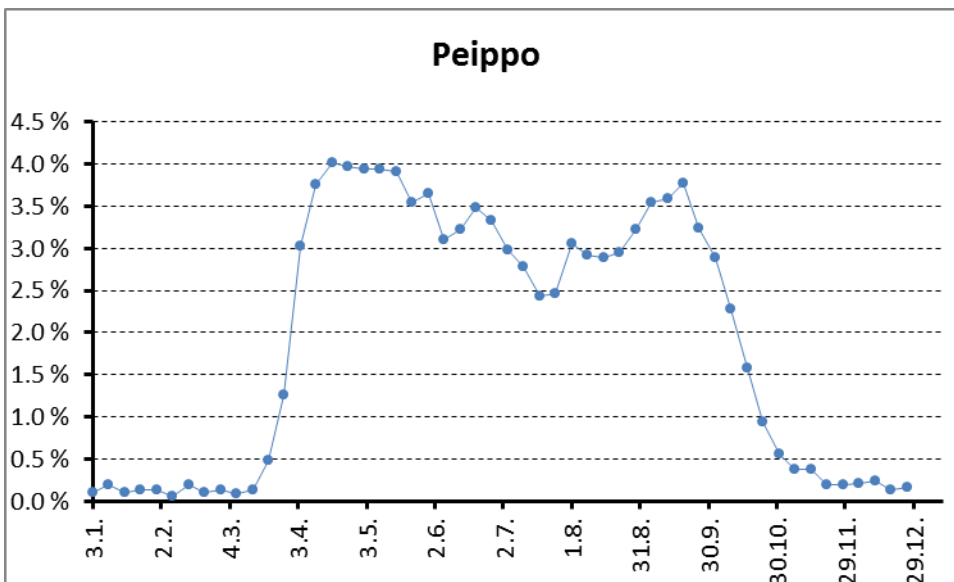
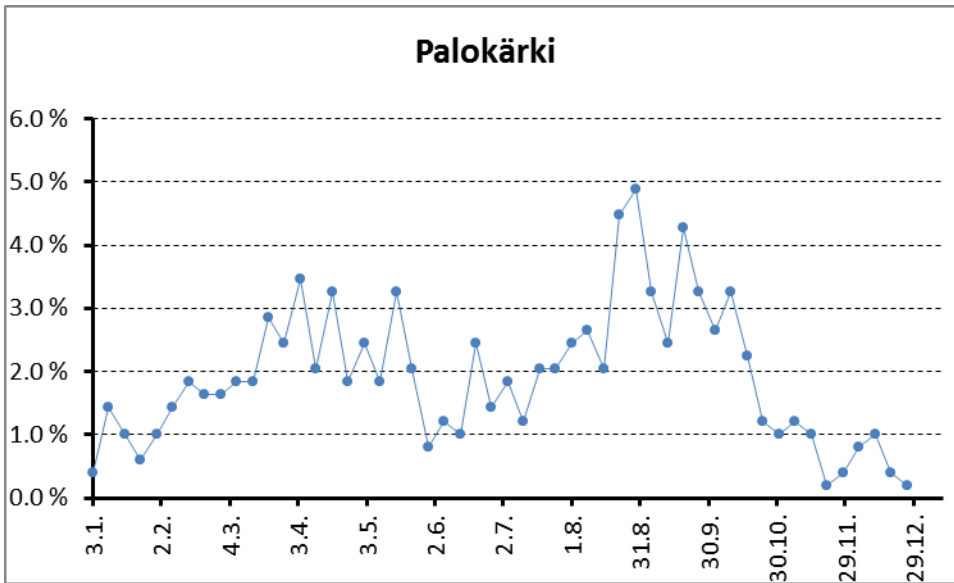
795



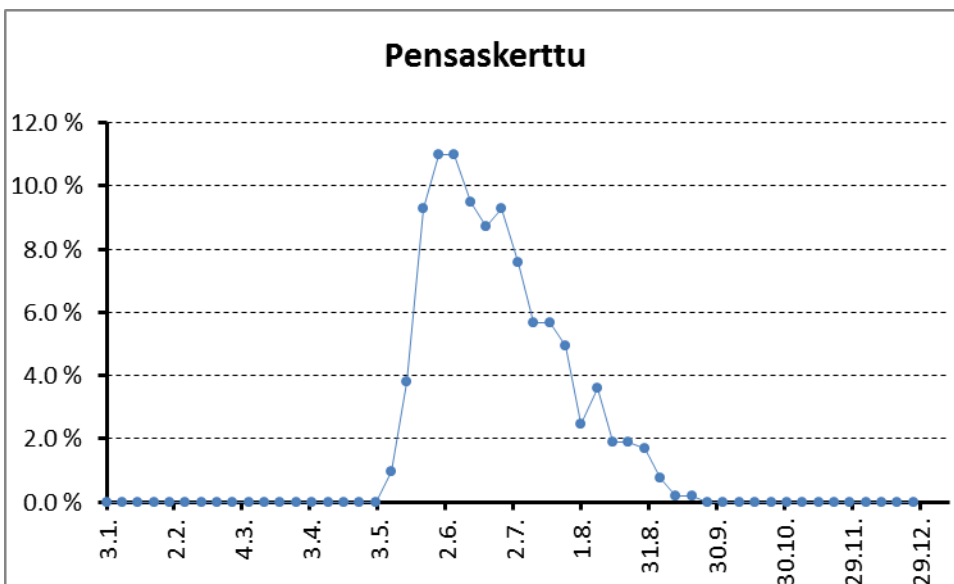
1658



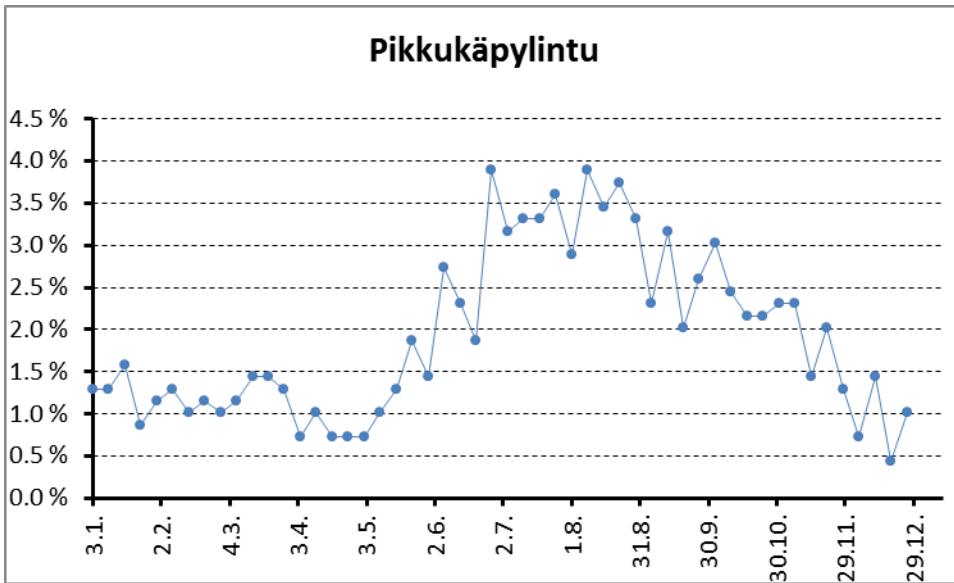
1887



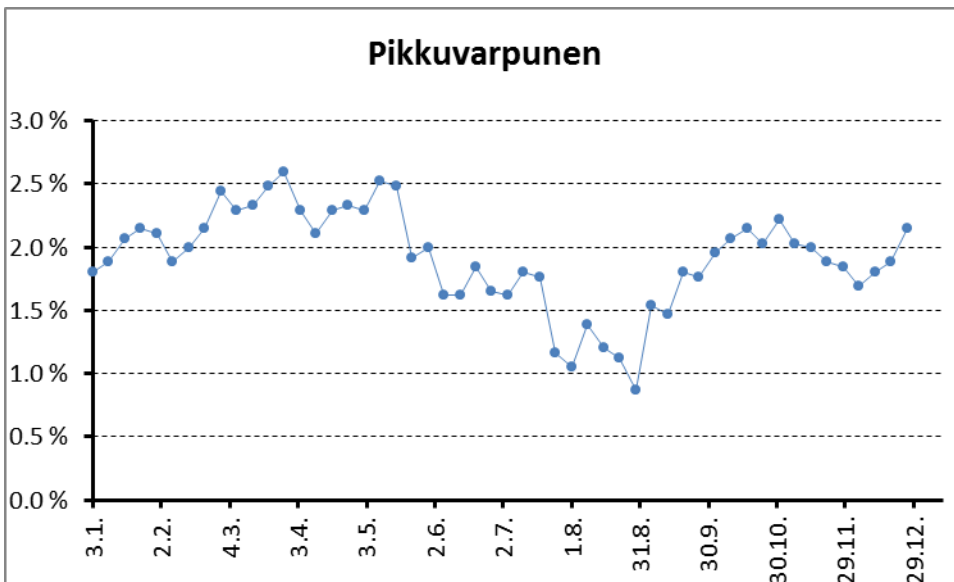
3731



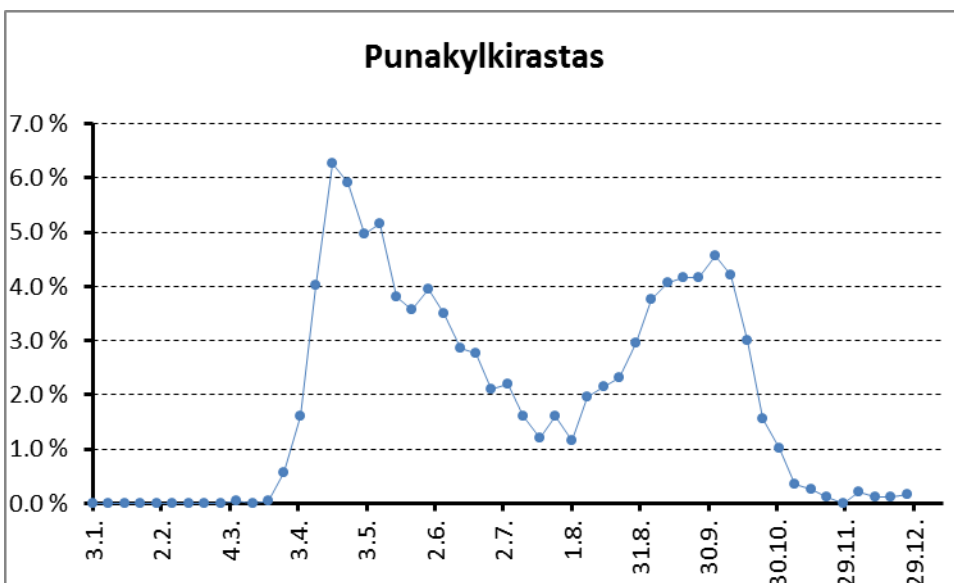
528



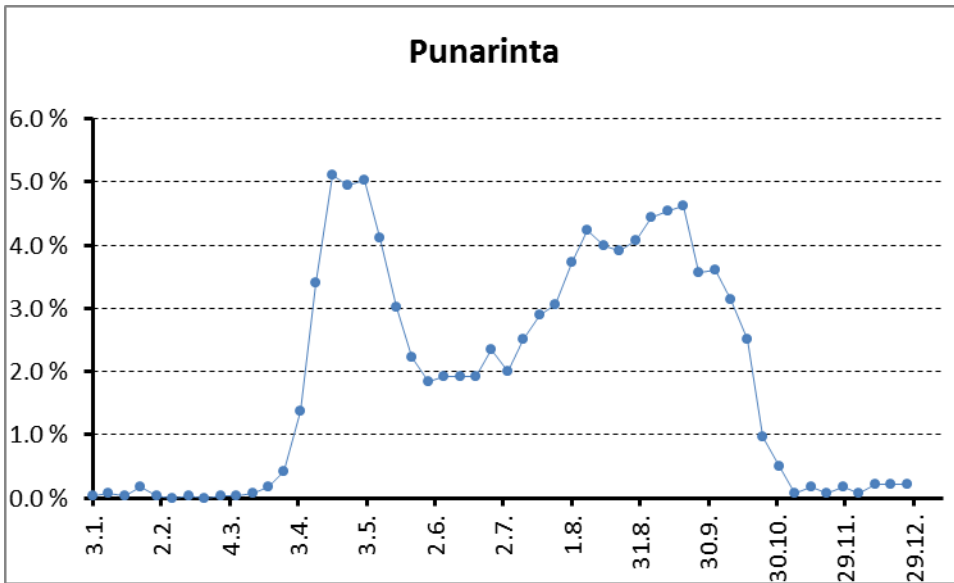
694



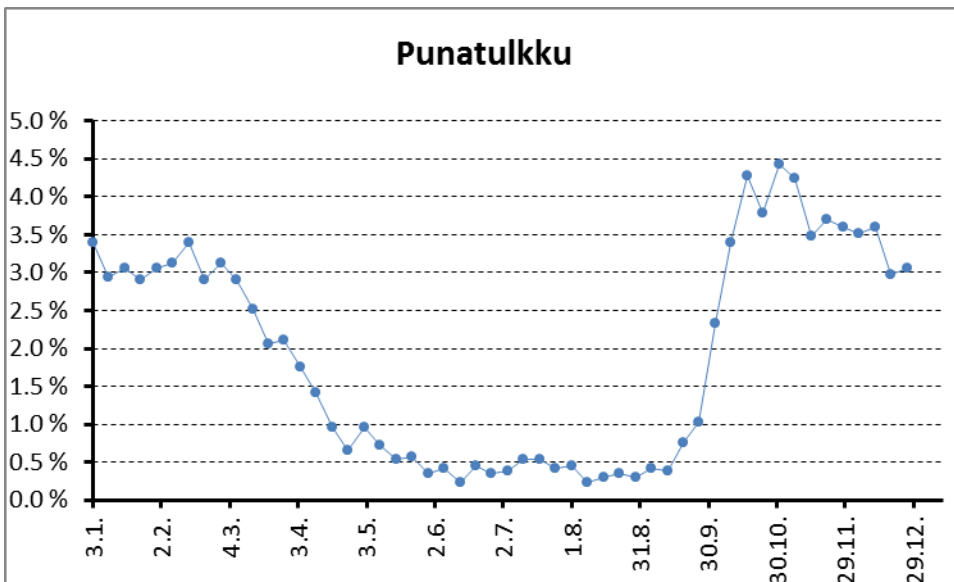
2658



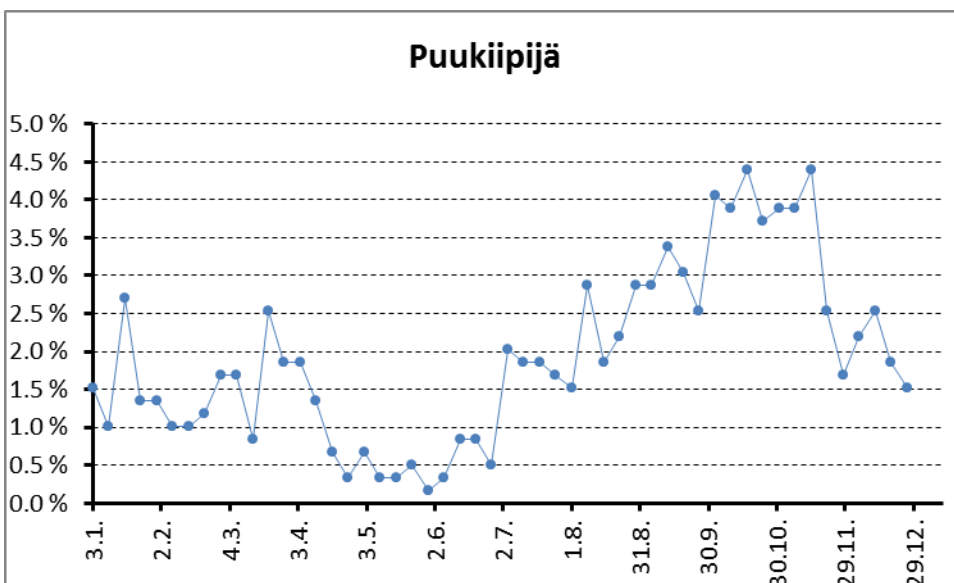
1995



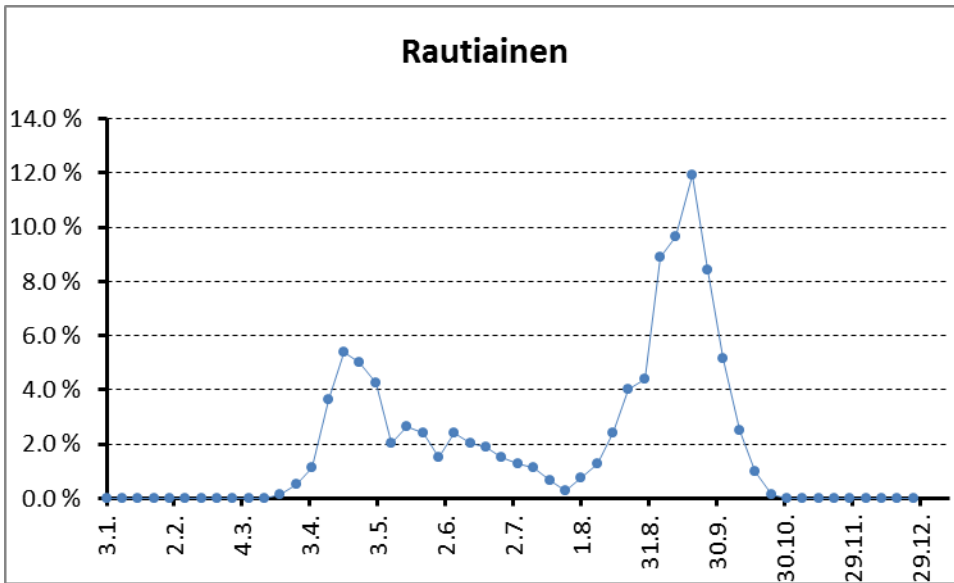
2383



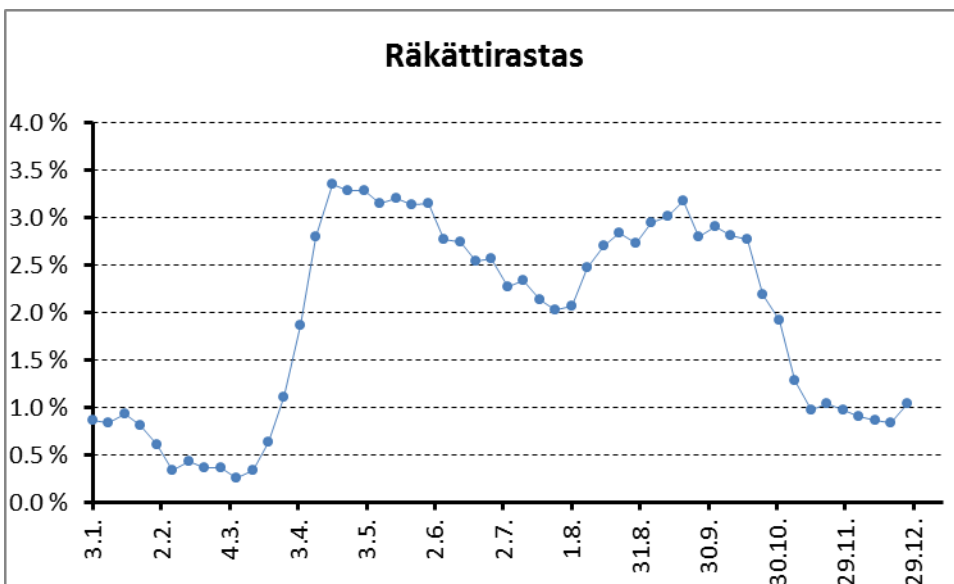
2617



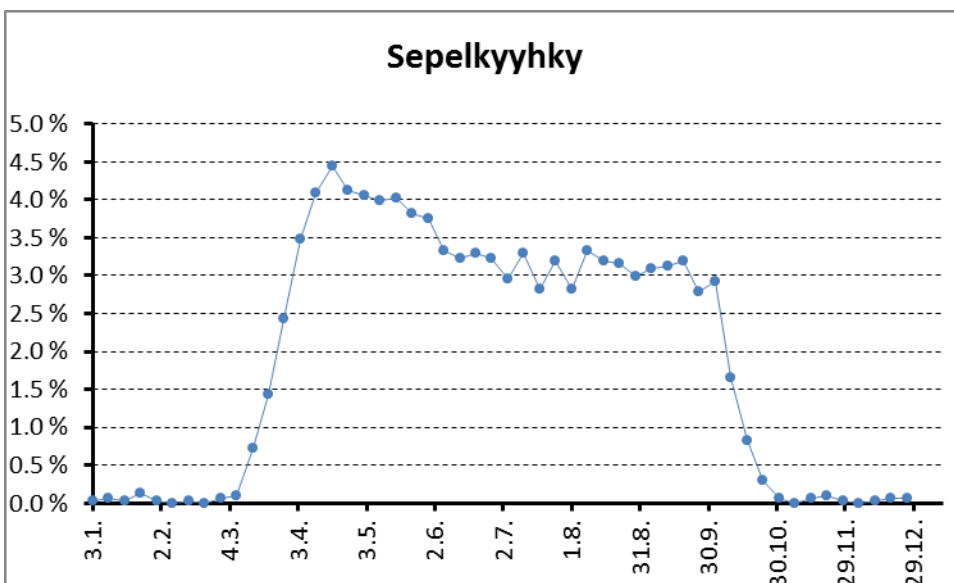
592



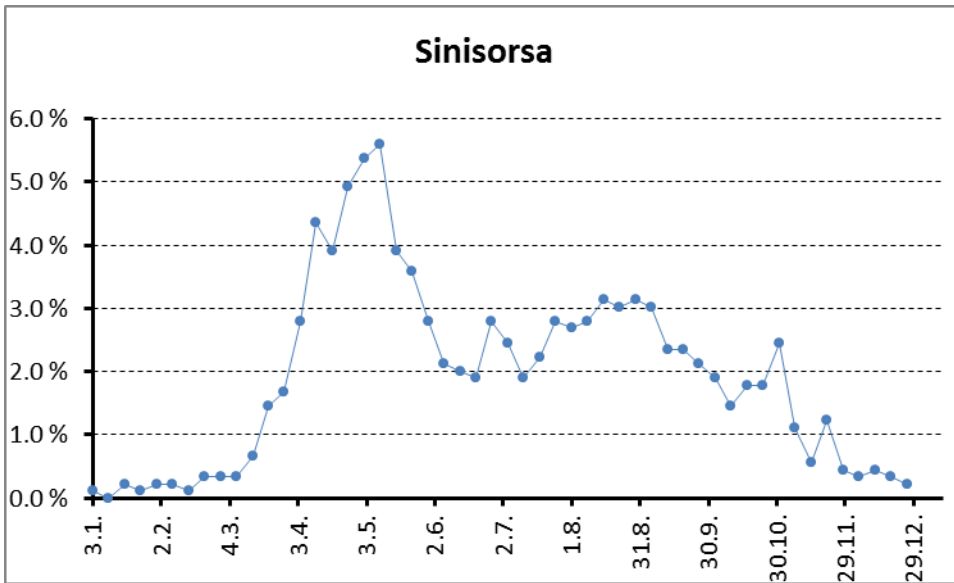
798



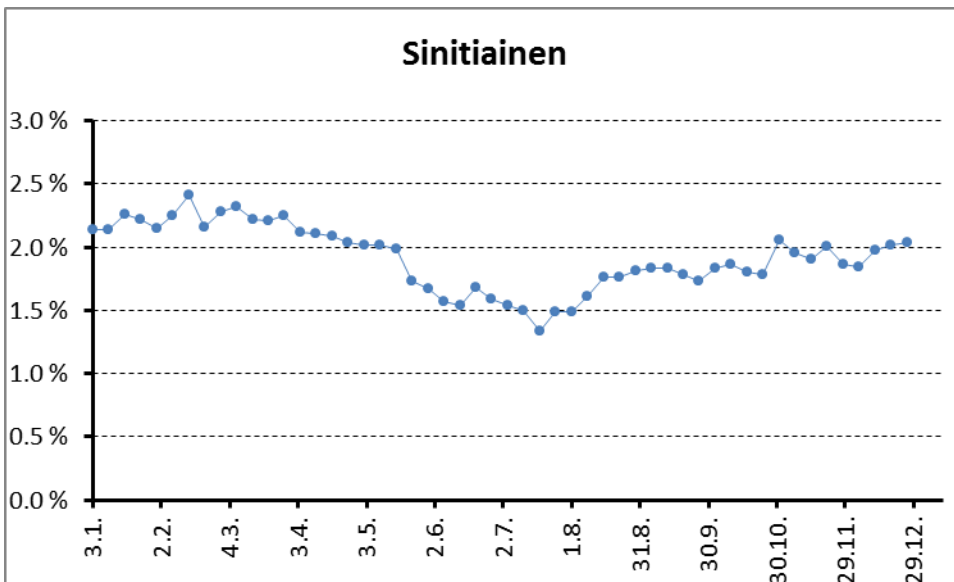
4437



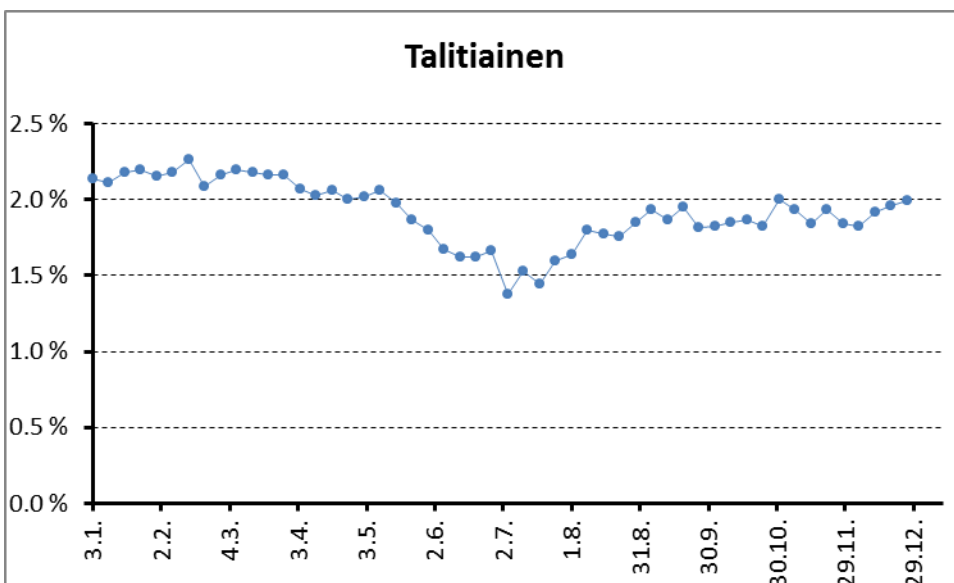
3010



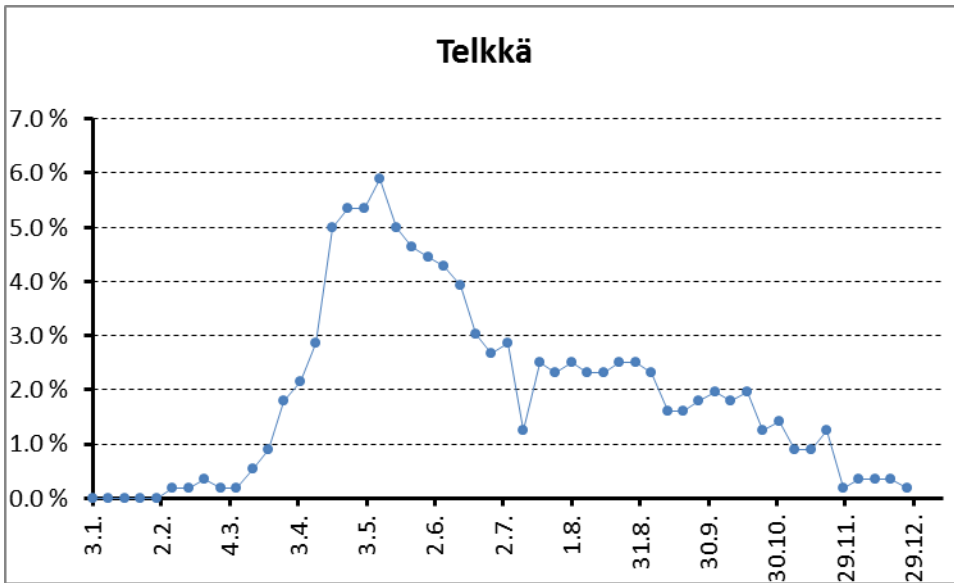
894



6935



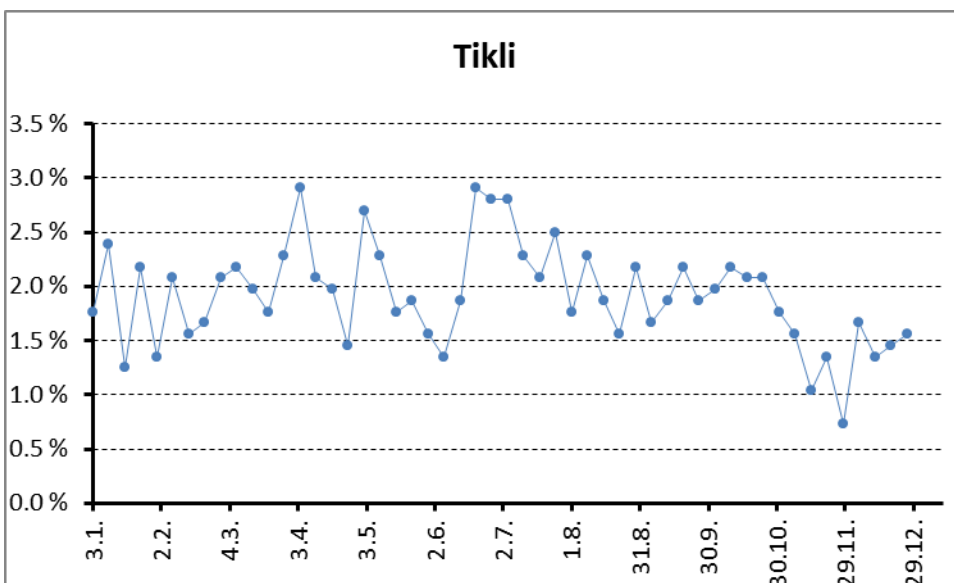
7337



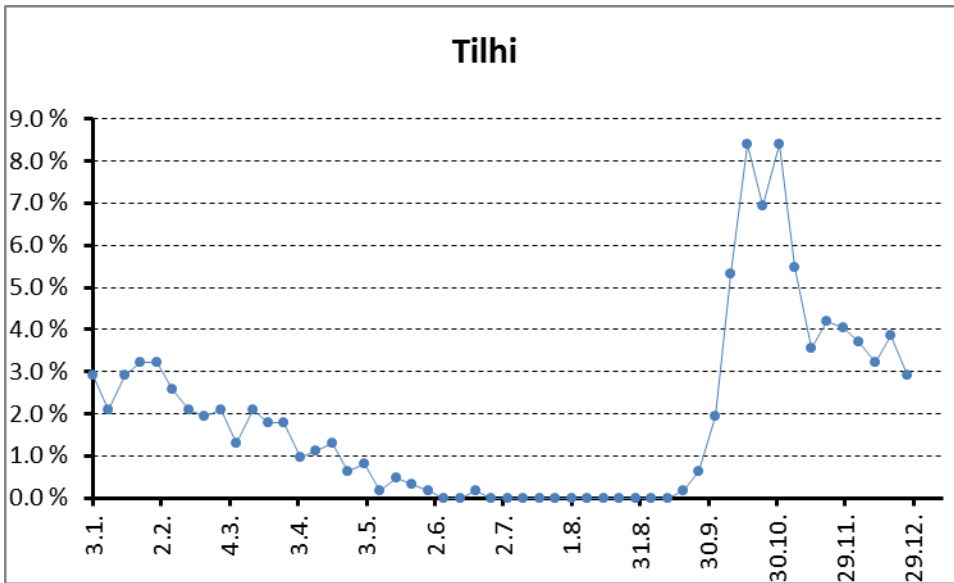
561



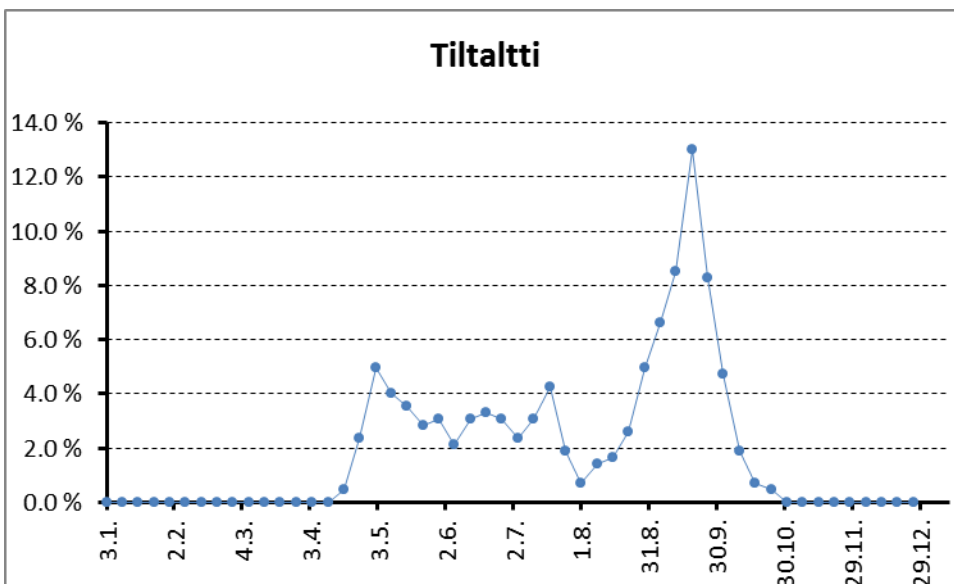
1162



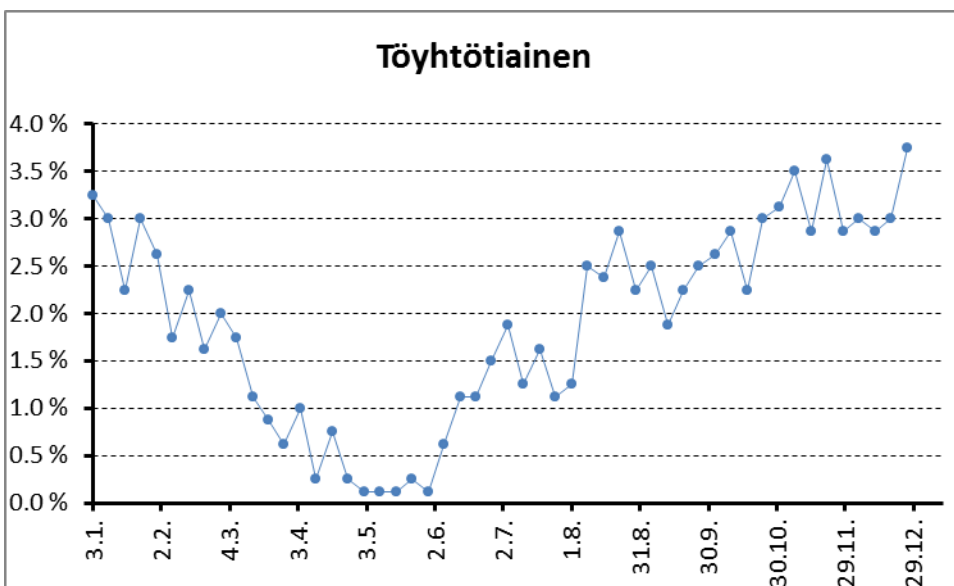
963



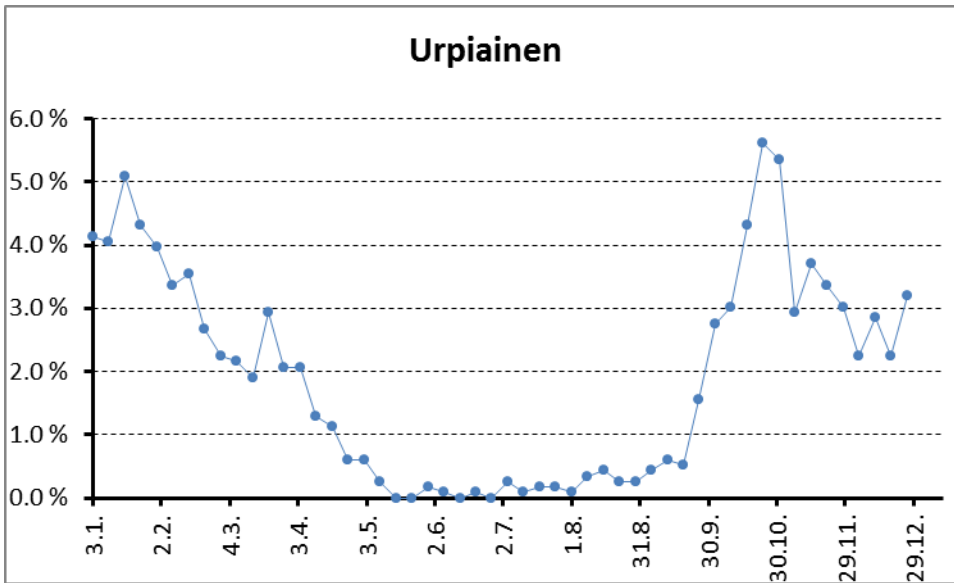
620



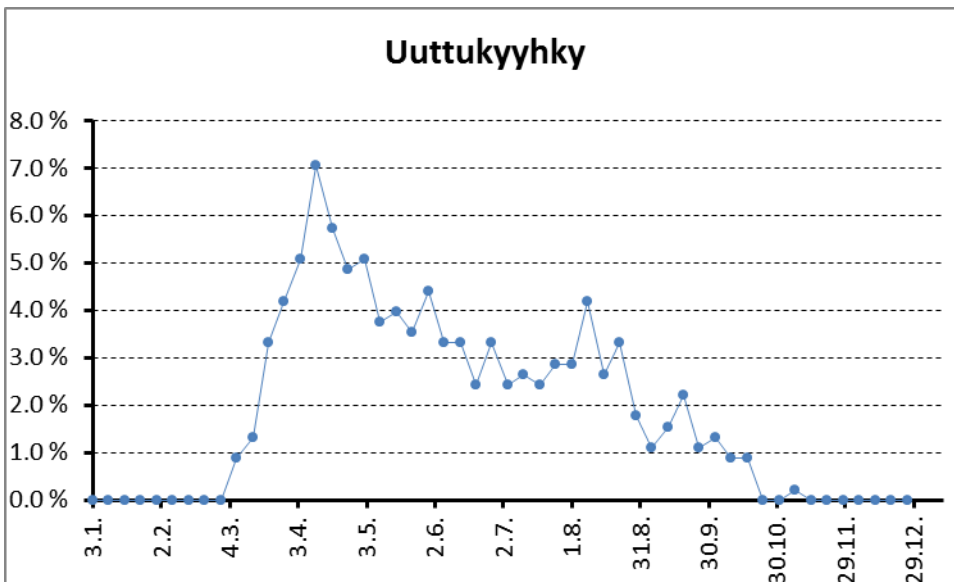
423



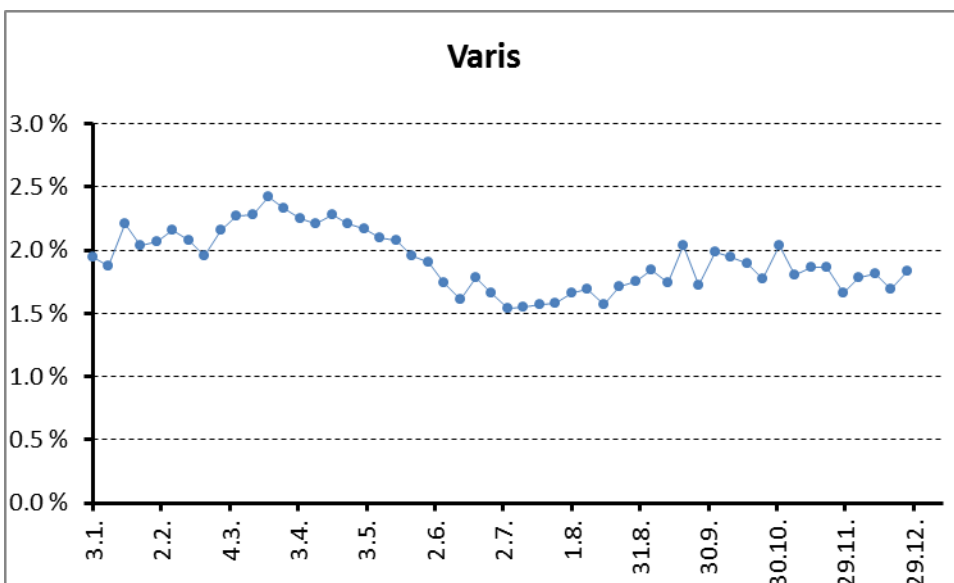
801



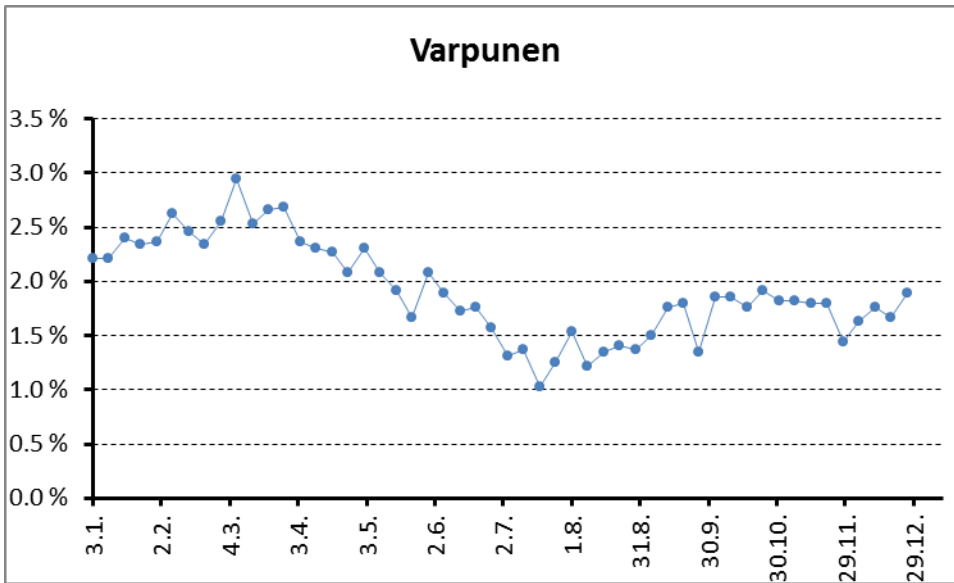
1158



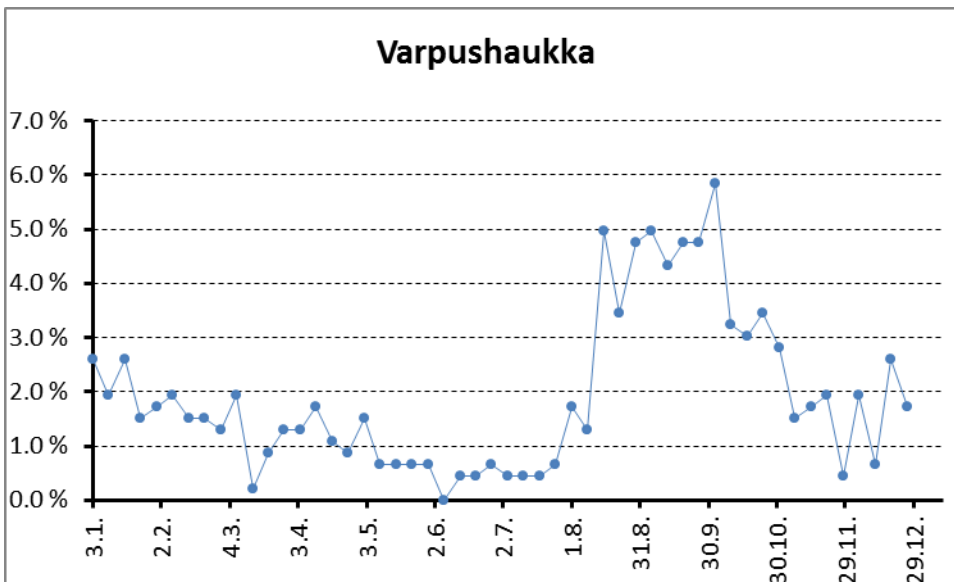
453



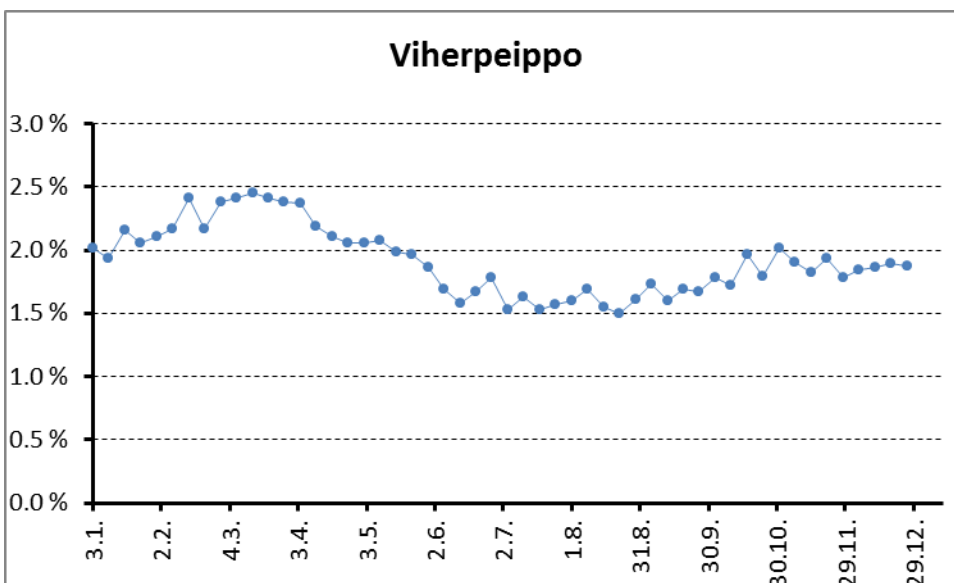
6439



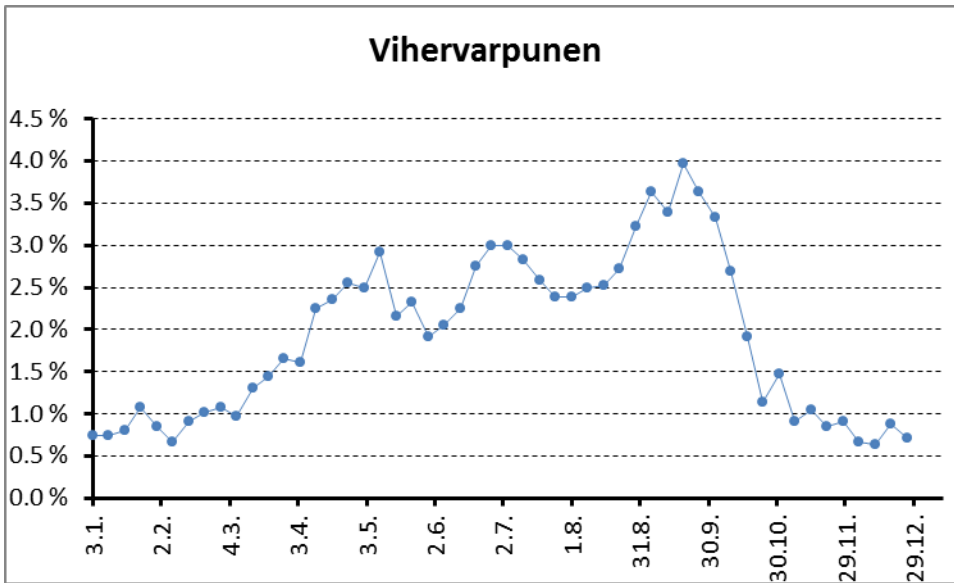
3125



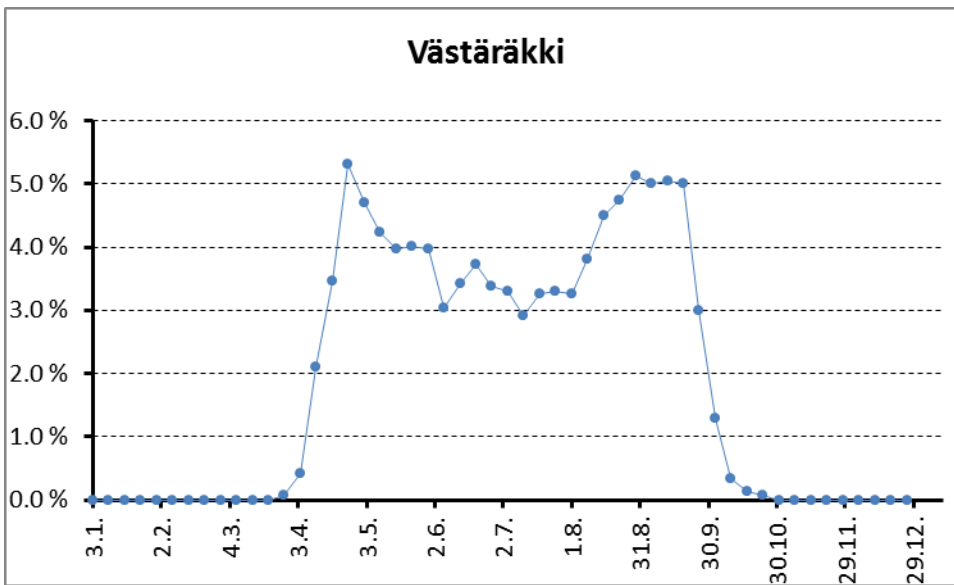
463



6452



2973



2336