

**Diversity**  
**Enrichment**  
**Transformation**

# Seminar 5: Building Strong Erasmus + Partnerships: Tools for Sustainable Collaboration.

Julie Cuttance (Academic & Training Manager) & Gareth Keane (Operations Manager)

Bridge Mills Galway Language Centre International House

# Seminar Overview

---

1. Foundations of a Strong Partnership
2. Sustainability in Partnerships
3. Case Study
4. Group Discussion
5. Take aways & Q&A



# Foundations of a Strong Partnership

---



**What makes a relationship or partnership successful?**

# Foundations of a Strong Partnership

---

- Shared vision and clearly defined goals
- Mutual trust, transparency and open communication
- Negotiating content prior to arrival
- Role clarity and agreed communication
- Cultural awareness and inclusivity across partners
- Regular evaluation and feedback loops

# Don't forget the personal touch!



*Happy  
Students*

# Sustainability in Partnerships

ENVIRONMENTAL



ORGANISATIONAL

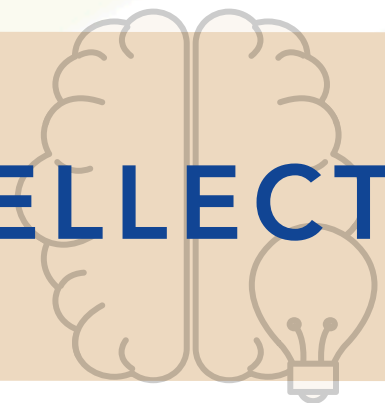


SUSTAINABILITY

RELATIONAL



INTELLECTUAL



# Case study

---

- **What are some potential challenges in dealing with partners?**
- **How could these be overcome?**

# Case study

## A SUCCESSFUL PARTNERSHIP



**Context**

**Challenges**

**Actions**

**Results**

**Sustainable?**



**Bridge Mills  
Galway Language Centre  
International House**  
Galway



# Activity/Discussion

- The strength, trust, and communication between partners.
- How well the partnership manages expectations, resolves conflicts, and supports each other.
- Building relationships that can endure over time.

ENVIRONMENTAL?

ORGANISATIONAL?

RELATIONAL?

INTELLECTUAL?

# Activity/Discussion

- How a partnership reduces its environmental impact.
- Making choices that are environmentally responsible.
- Ensuring activities can be maintained without harming natural resources.

ENVIRONMENTAL?

ORGANISATIONAL?

RELATIONAL?

INTELLECTUAL?

# Activity/Discussion

- How knowledge, skills, and learning are created, shared, and retained within the partnership.
- Ensuring expertise isn't lost when people leave or roles change.
- Continuous improvement, reflection, and capacity-building

ENVIRONMENTAL?

ORGANISATIONAL?

RELATIONAL?

INTELLECTUAL?

# Activity/Discussion

- The internal structures, processes, and resources that allow a partnership to function over time.
- Stable funding, clear roles, good systems, and continuity.
- Ensuring the organisation can deliver the partnership's objectives long-term.

ENVIRONMENTAL?

ORGANISATIONAL?

RELATIONAL?

INTELLECTUAL?

# Take aways & Q&A

---



- Think of two actionable points discussed today that you see as valuable

# Take aways & Q&A

---



Any Questions?



*Thank You*



**Bridge Mills  
Galway Language Centre  
International House**  
Galway

