

PAINTING WOOD

POM1YTN
Anniina Muhonen
Eevi Happonen

What do you need?

Mixing stick

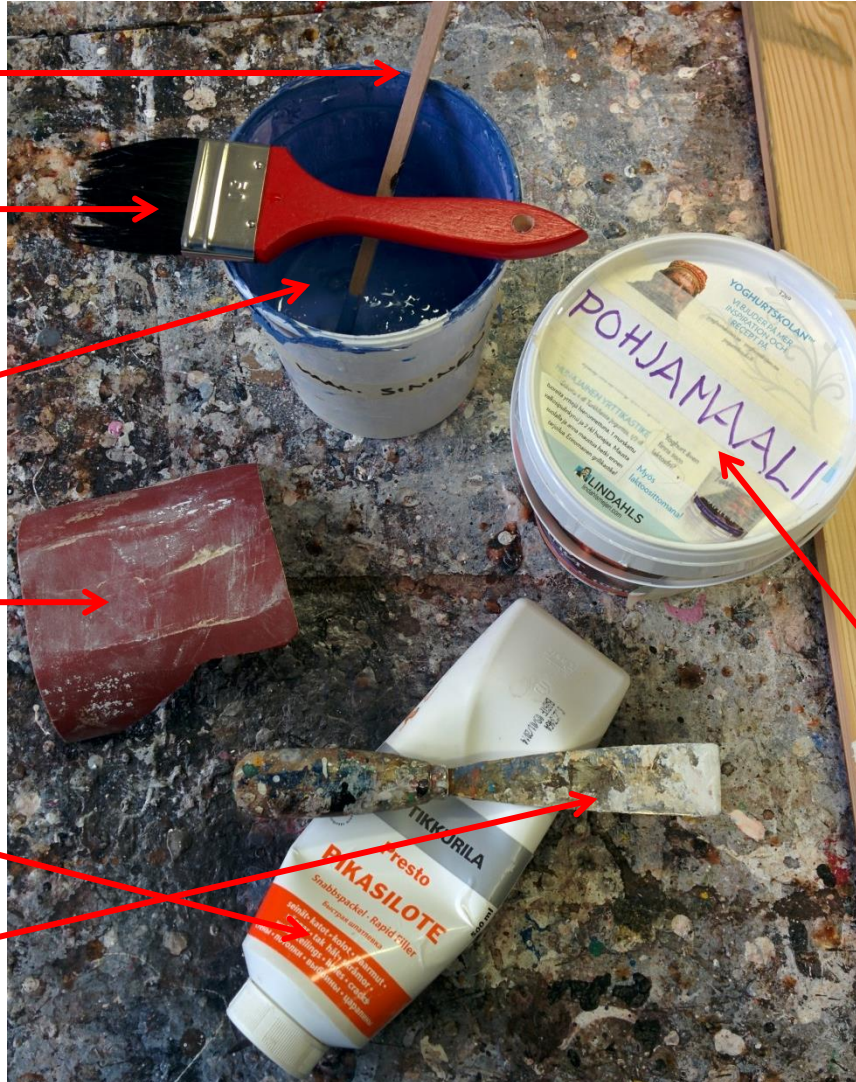
Paint brush

Colour paint

Sand paper

Filler

Trowel



Coat (and gloves)

Prime paint

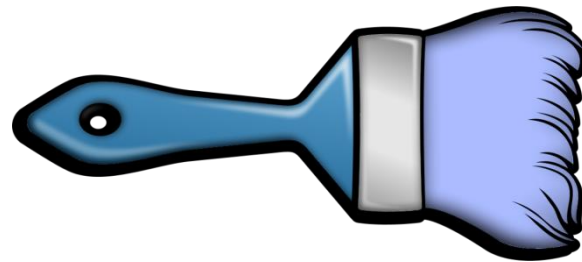
Safety



- Water-soluble paints are the most common in indoor use
 - Non-toxic
 - No fumes
 - Easy to remove with water
- Cover your clothes!
- Make sure there is a good air conditioning in the room

Choosing the paint and the brush

1. Prime paint
2. Choose the preferred colour for your work
3. Choose a wide brush (not wider than your work)



Preparations



1. Make sure the surface is well sanded, smooth and clean.



2. If there are holes in the surface use the filler and trowel to cover them. Let it dry and sand again if necessary.



Preparations

3. **Always** read the information on the paint can
-drying time
-special instructions.

4. Mix the paint well with a stick before painting.



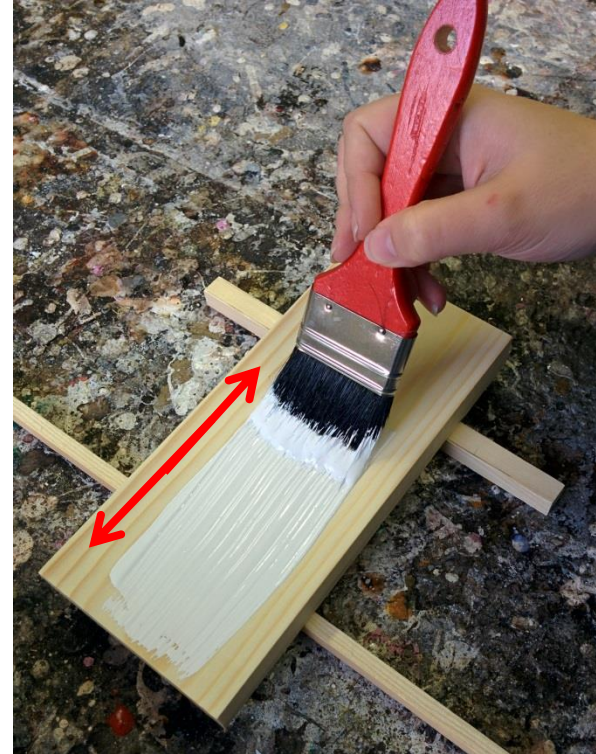
Priming

Why?

To get a better outcome, smoother surface and brighter colour.

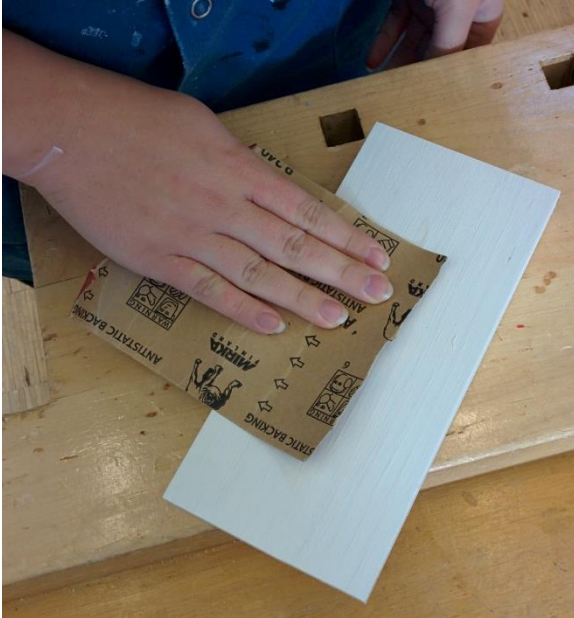


1. Place the object on holders.
2. Dip the brush into the paint half way
NOT THE WHOLE BRUSH

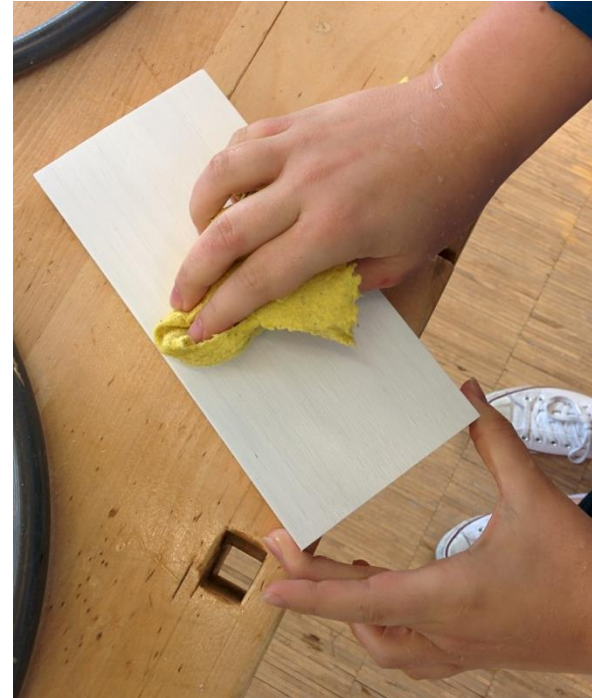


3. Keep the brush in a 45 degree position. Paint parallel to wood fibres.
4. Be careful and use long and calm strokes. Watch out for paint drips!

Priming



5. After the prime paint has dried sand the object with a fine sand paper to make sure the surface is smooth.



6. Clean the object from dust.

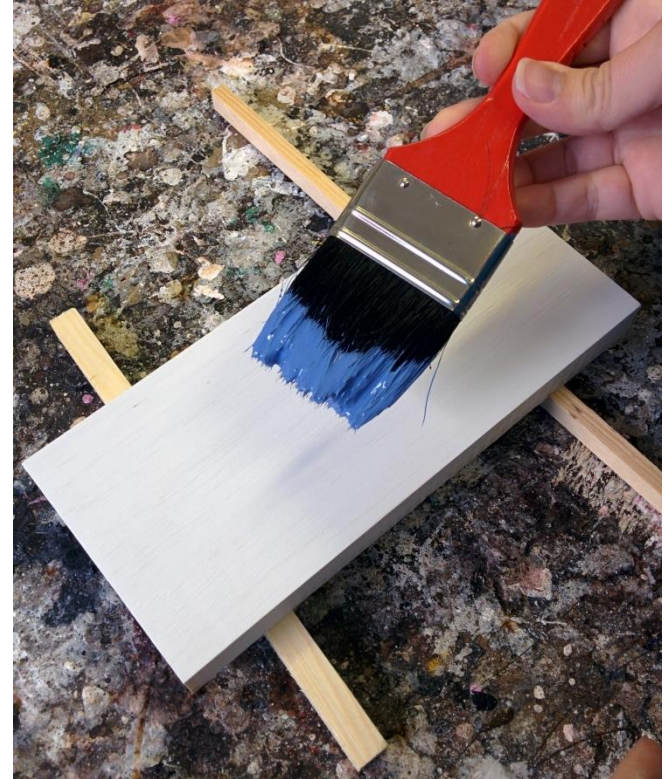
If necessary repeat the priming process!



Painting



1. Mix the paint well with the stick.



2. Place the object on holders.

3. Dip the brush into the paint half way.

Painting



6. Let it dry (check the time from the paint can).

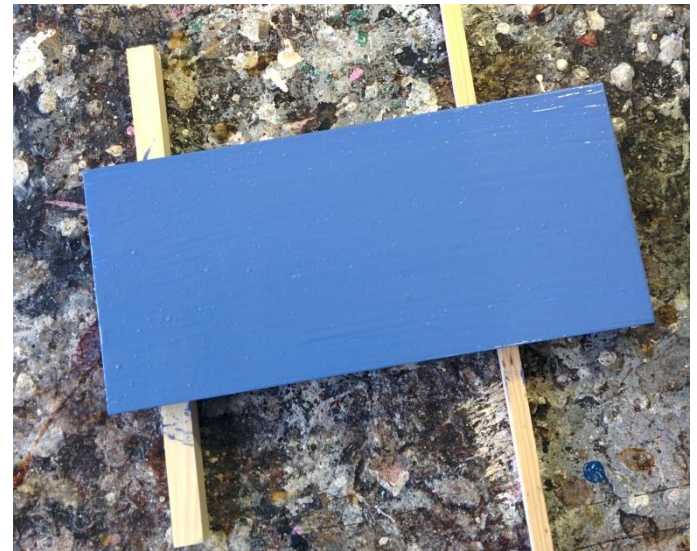
7. When the object is dry repeat painting 1-2 times.



8. Good job!

4. Keep the brush in a 45 degree position. Paint parallel to wood fibres.

5. Be careful and use long and calm strokes. Watch out for paint drips!



After painting- Clean up!



1. Clean the brush **carefully** with water and place it to dry.

2. Close the paint containers so that the paint won't dry!