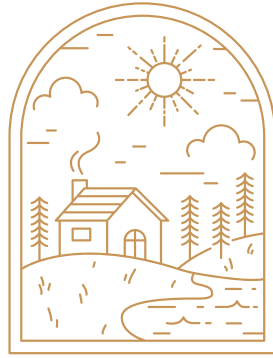


# Gosa don manat?



dállu



geassestohpu



gávpi



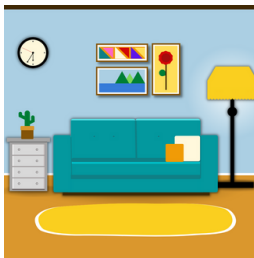
girjerádju



buohcceviessu



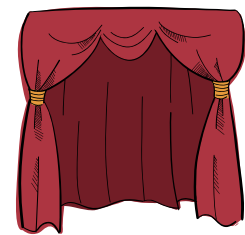
girdingieddi



orrunlatnja



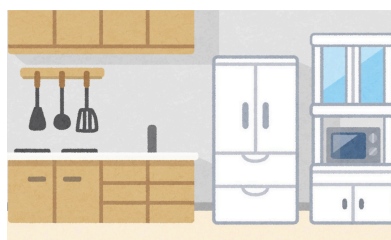
skuvla



teáhter



hivsset:g



gievkkan



gávpot:g

# Geasa don attát skeaŋkka?



áhku



áddjá



nieida



gánda



eadni



áhčči



ustit, :b



doavttir, -ktá-



oahpaheaddji



beana, -tg- :g



bussá



Máhtte

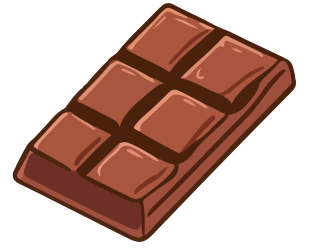
# Masa don liikot?



gáffe



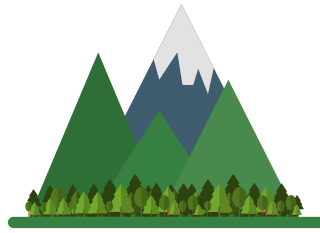
deadja



šukkoláda



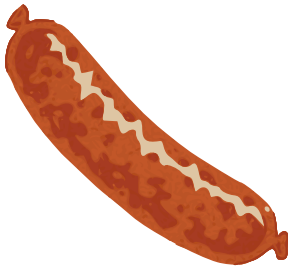
musihkka



luondu



sávdni



márfi



borramuš



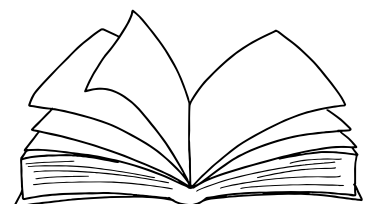
dihtor



biila



sihkel



girji