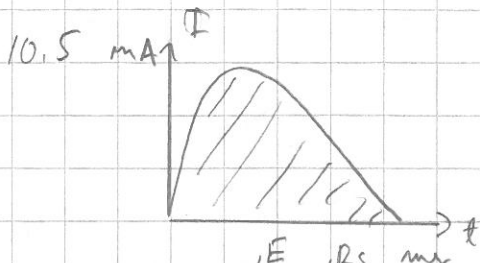
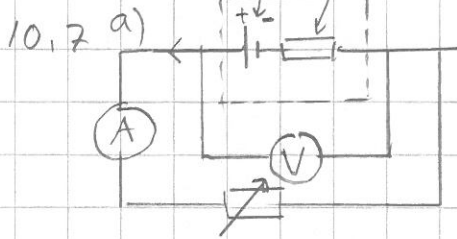


10. Virtopierit



$$Q = 3,28 \cdot \text{mA} \cdot \text{ms} = 3,28 \mu\text{C} \approx \underline{3,3 \mu\text{C}}$$

$\downarrow \quad \downarrow$
 $10^{-3} \cdot 10^{-3} = 10^{-6}$



$$U = E - R_s I \quad (\Leftrightarrow) \quad U = -R_s I + E$$

$\uparrow \quad \uparrow$
 $y = kx + ke$

$\Rightarrow (I, U)$ -koordinatitessa suora

b) Geogelma: $U = -0,14 I + 1,58$

$\Rightarrow E = 1,58 \text{ V}$ (lähdejännite)

c) $R_s \approx 0,14 \Omega$

d) Oikosulkuvirta: $I = \frac{E}{R_s} = \frac{1,58 \text{ V}}{0,14 \Omega} \approx 11,3 \text{ A} \approx \underline{11 \text{ A}}$