

Främling

Words and Music by  
Lasse Holm, Monica Forsberg  
sov. HM24

♩ = 110

Intro 1

8 **A1** *f*

19 **A2** ⌘

29 To Coda

38 **B1**

47 1. 2.

55 **C1**

60

66 D.S. al Coda

75 ⌘ Coda

The image shows a bass guitar score for the song 'Främling'. It begins with a tempo marking of 110 beats per minute and a 2/4 time signature. The key signature has one sharp (F#). The score includes an 8-measure introduction, followed by section A1 (measures 8-18) and section A2 (measures 19-28), which ends with a repeat sign. Section B1 (measures 38-46) starts with a double bar line and repeat sign. After measure 47, there are two first/second endings. Section C1 (measures 55-59) follows. Measure 60 is a single measure. Measure 66 is marked 'D.S. al Coda' and changes to a 2/4 time signature. The final section, the Coda (measures 75-78), is preceded by a Coda symbol. The score is written on a single staff with a bass clef and a key signature of one sharp.

76

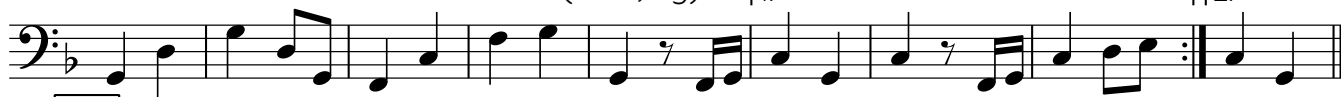
**B2**

86

(2x: c, g)

1.

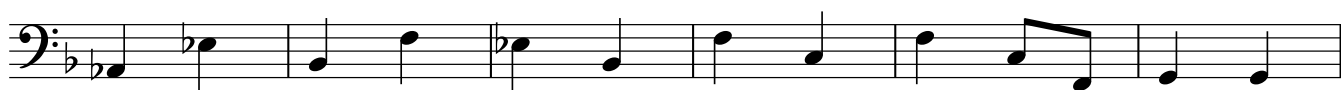
2.

**C2**

95



106



112

