

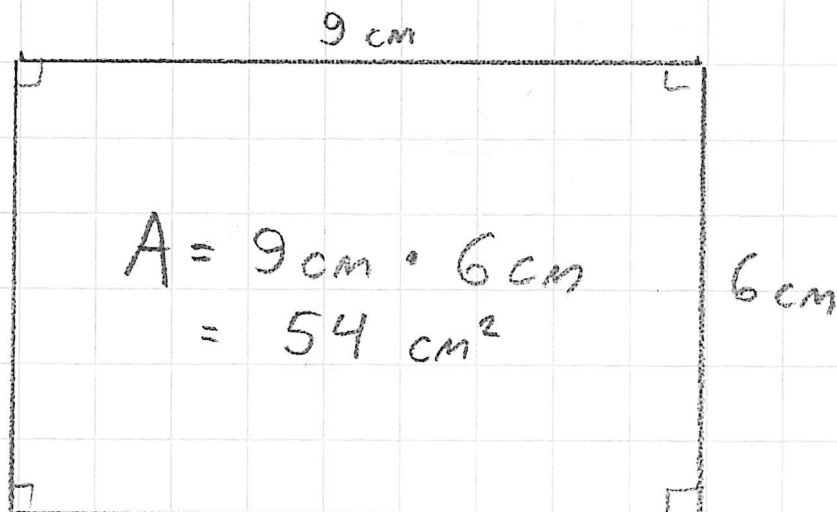
S.132

674

Piirrä kuva ja laske pinta-ala!

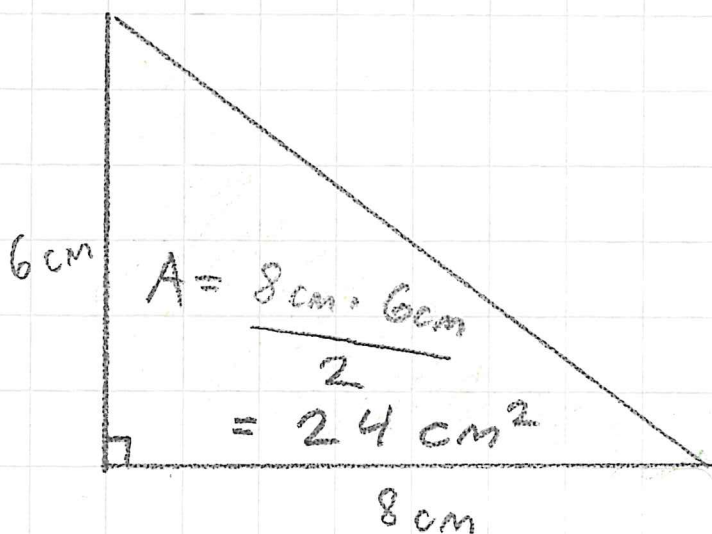
a)

SUORA-KULMIO



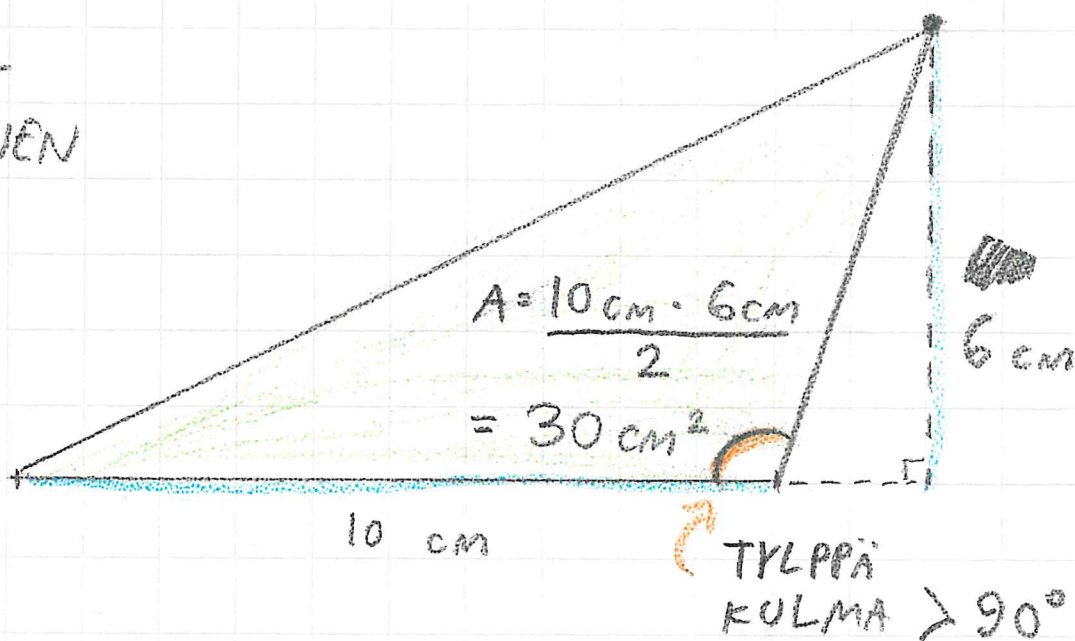
b)

SUORA-KULMAINEN KOLMIO

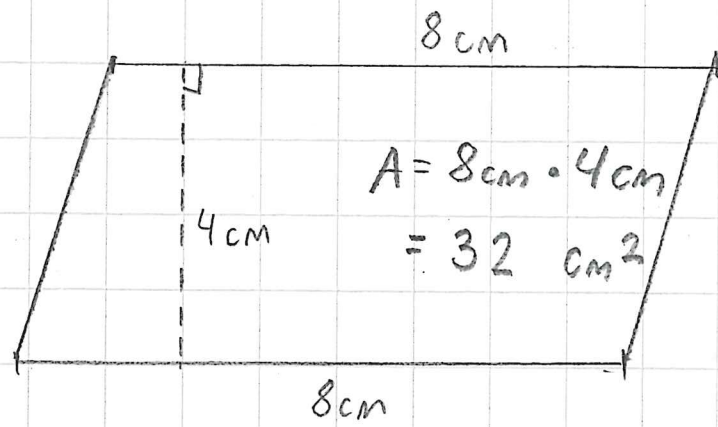


c)

TYLPPÄ-KULMAINEN KOLMIO



d) suunnikas

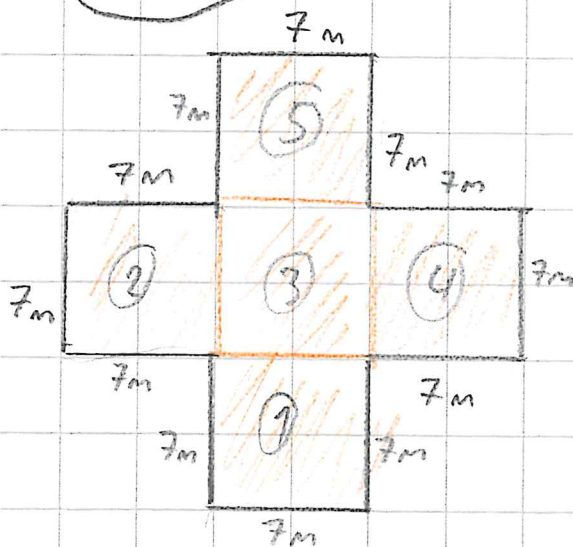


(677) a)

$$\begin{aligned} A &= 26 \text{ dm} \cdot 19 \text{ dm} - 4 \text{ dm} \cdot 4 \text{ dm} - 6 \text{ dm} \cdot 4 \text{ dm} \\ &= 494 \text{ dm}^2 - 16 \text{ dm}^2 - 24 \text{ dm}^2 \\ &= 454 \text{ dm}^2 \quad (:100) \\ &= 4,54 \text{ m}^2 \end{aligned}$$

(679) Laste

a) piiri b) pinta-ala



a) $p = 7 \text{ m} \cdot 12$
 $= 84 \text{ m}$

b) $A = 7 \text{ m} \cdot 7 \text{ m} \cdot 5$
 $= 49 \text{ m}^2 \cdot 5$
 $= 245 \text{ m}^2$