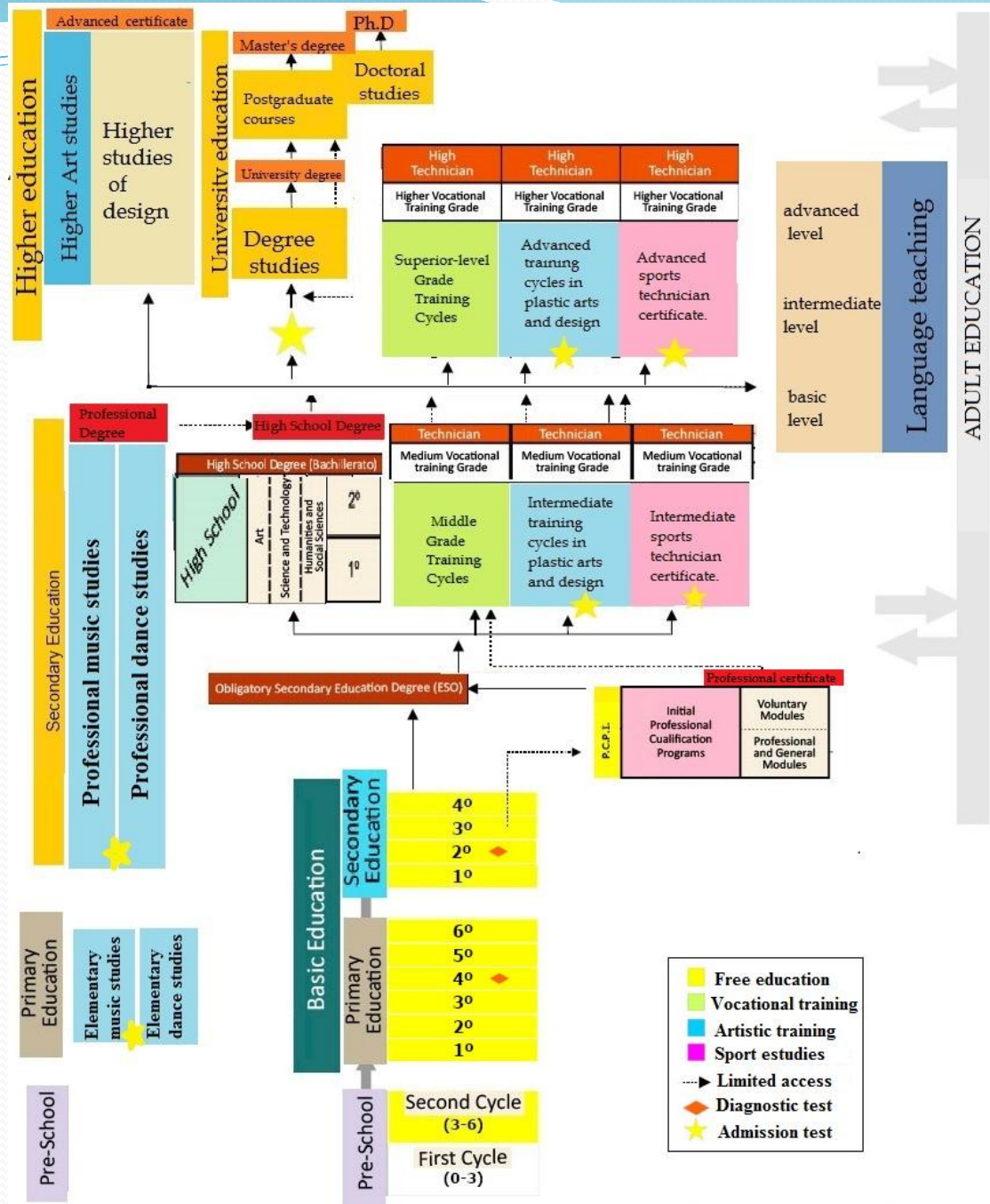


THE SPANISH EDUCATION AL SYSTEM

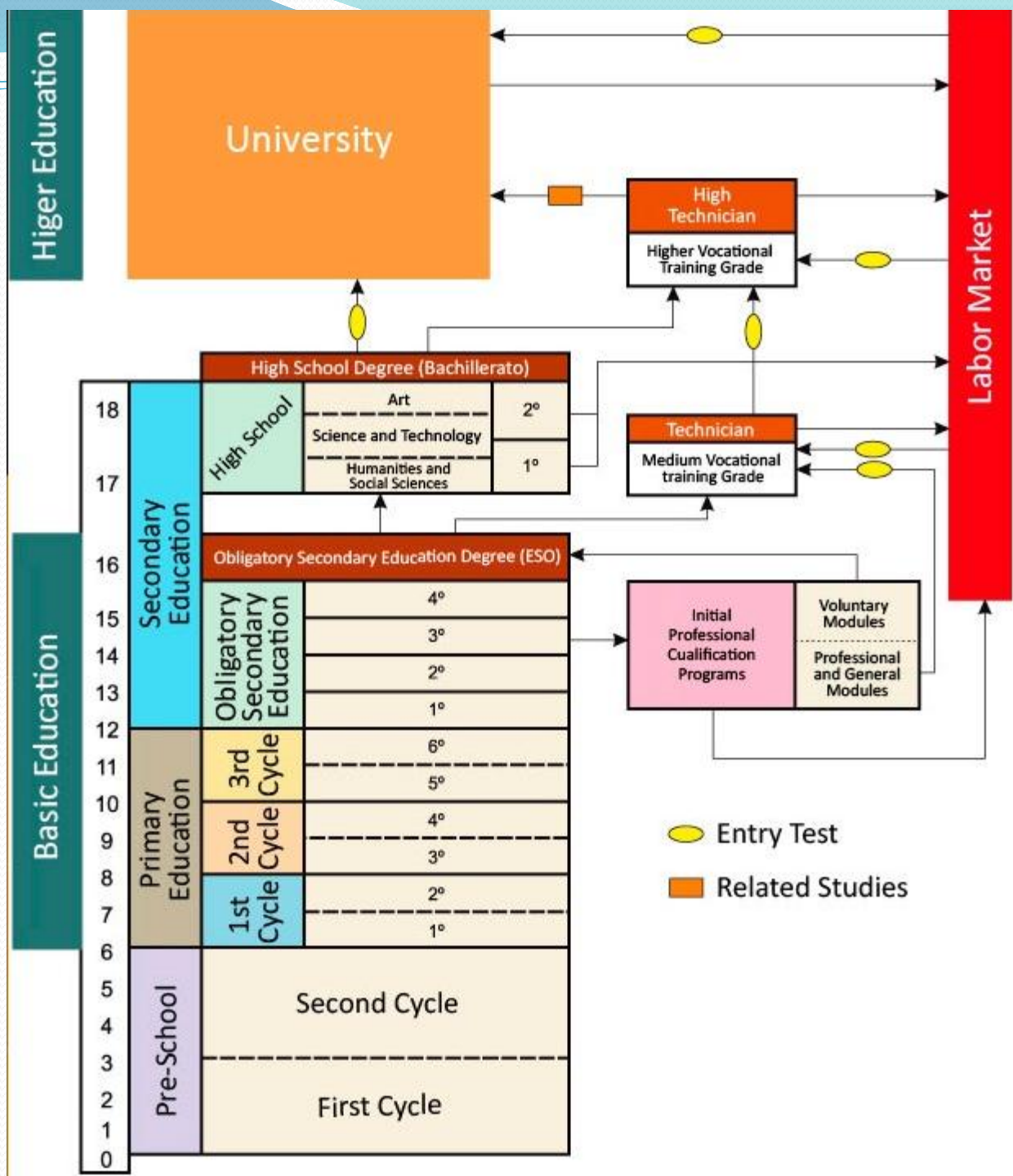
The Spanish education system is governed by three fundamental principles:

- 1) The comprehensive development of the individual,
- 2) Fostering full development of the individual's personality,
- 3) Contributing to the creation of a more fair and supportive society.

SPANISH EDUCATIONAL SYSTEM



SPANISH EDUCATIONAL SYSTEM





Castilla-La Mancha

Organization of General Education



- **NURSERY/ INFANT EDUCATION** (0 TO 6 YEARS)
- **COMPULSORY PRIMARY EDUCATION** (6 TO 12 YEARS)
- **COMPULSORY SECONDARY EDUCATION** (12 TO 16 YEARS)
- **POST- COMPULSORY SECONDARY EDUCATION ('BACHILLERATO')** (16 TO 18 YEARS)
INTERMEDIATE VOCATIONAL TRAINING
- **UNIVERSITY EDUCATION** (18+ YEARS)
(*University admission dependant on mandatory entrance exam)
ADVANCED VOCATIONAL TRAINING

SPANISH EDUCATIONAL SYSTEM

ADMINISTRATIVE CONTROL	EXTENT OF PUBLIC EDUCATION	RESPONSABILITIES IN EDUCATION	STUDENTS POPULATION	LANGUAGES AT SCHOOL
<ul style="list-style-type: none">• Public• Private• Mixed	<ul style="list-style-type: none">• 70% at compulsory education• 90% at specialized education• 90% at university	<ul style="list-style-type: none">• State• Communities• Local Authorities• Schools	<ul style="list-style-type: none">• 5.000.000 pupils at compulsory education	<ul style="list-style-type: none">• Official: Spanish• Co-official: other 3• Foreign-languages

SPANISH EDUCATIONAL SYSTEM

STATE

- General organization of the education system
- Core curriculum
- General planning of evaluation, qualifications, ...

COMMUNITIES

- Administrative responsibility
- Development of state regulations

LOCAL AUTHORITIES

- Maintenance of educational buildings
- Planning of supplementary activities
- Representacion at school councils.

SCHOOLS

- Autonomous at organisational, pedagogical and financial matters.
- Aim of achieving a better adequacy of resources .

SPANISH EDUCATIONAL SYSTEM

CURRICULUM DEVELOPMENT

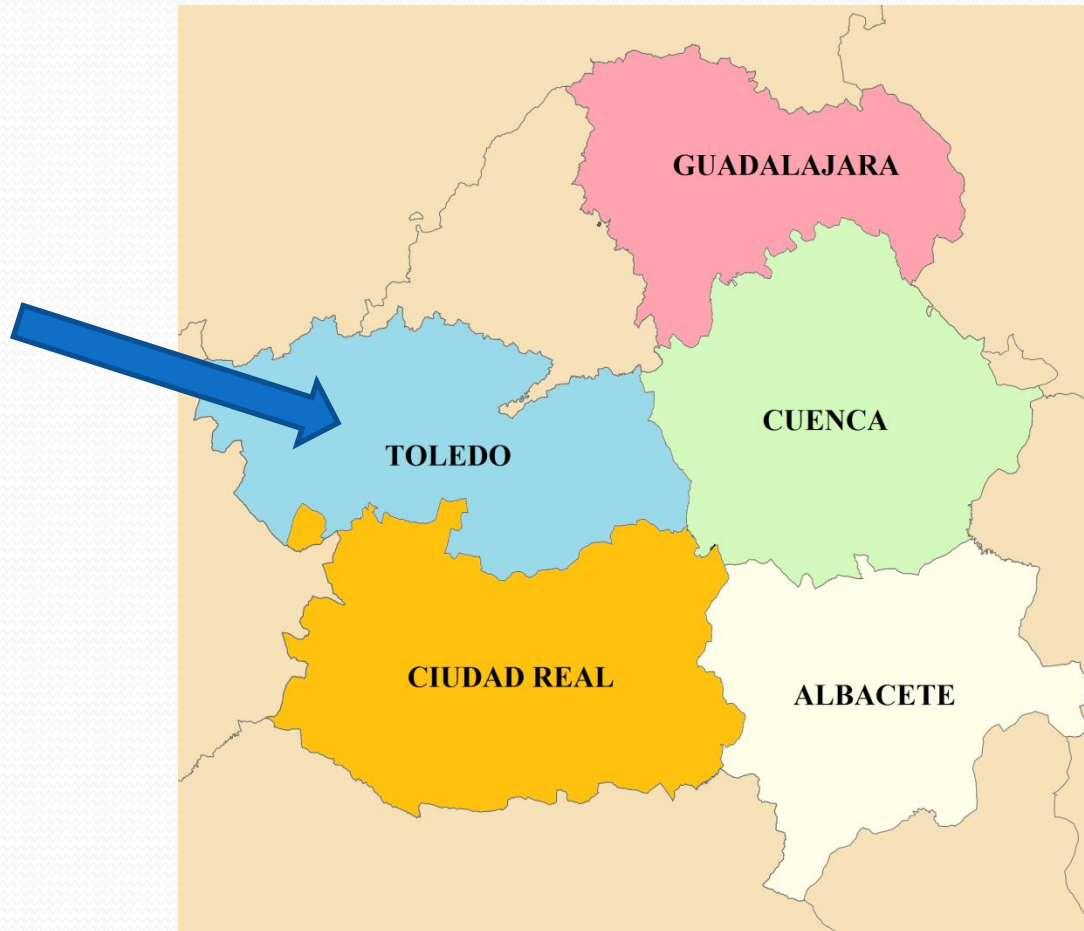
- **State** : core curriculum (55-65%)
- **Community**: develops the core curriculum.
- **Schools**: develop and adapt this basic curriculum.



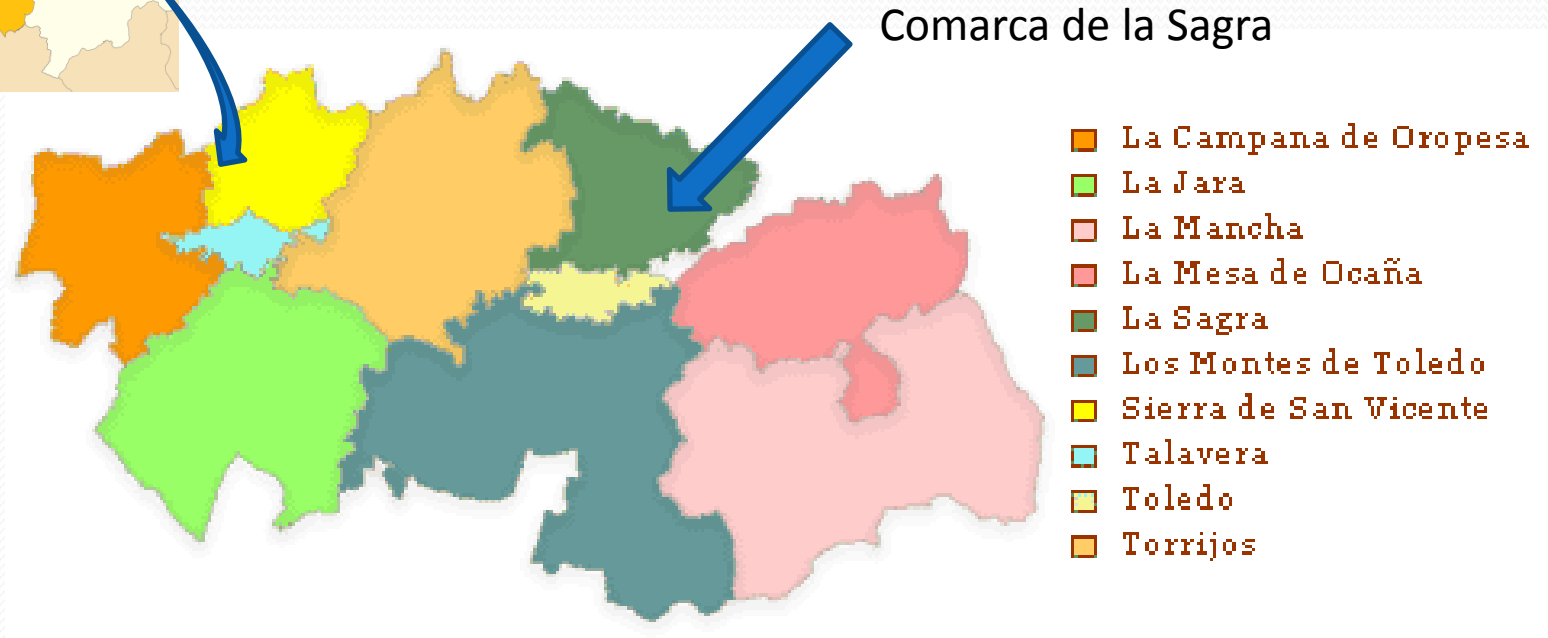
Castilla-La Mancha in Spain



Toledo in Castilla-La Mancha

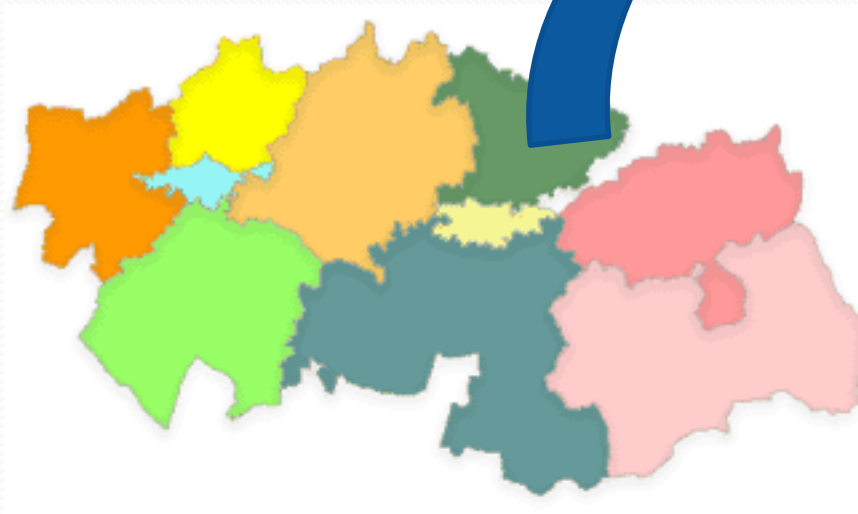


“Comarca de la Sagra” (association of municipalities)” in Toledo



“Comarca de la Sagra”

(association of municipalities)



Our towns in “Comarca de la Sagra” (association of municipalities)

