



# Personal Learning Environment

Learning through collaboration  
and sharing

Patrik Engström

Johanna Kristensson

**Barn- och ungdomsförvaltningen**

# Content

- About Halmstad municipality
- About Swedish educational system
- Imaile - Innovative methods for awards procedures of ICT learning in Europe
- Local project - Personal learning environment through collaboration and sharing

Stockholm

# Sweden



Gothenburg



Halmstad

Copenhagen Malmö

Sweden and FDA

Small text block providing information about Sweden and FDA.

Thank you!

Contact information including email (parks.environ@almsted.se), website (http://almsted.se), and social media handles (@almstedsweden, @almstedsweden, MalmöOppstad&Kust).





## Facts about Halmstad

- Founded in 1307
- Population: about 95 000
- Three school districts
- 36 public schools
- 80 public preschools
- 4 private elementary schools & 27 private preschools



# Facts about Halmstad

- Founded in 1307
- Population: about 95 000
- Three school districts
- 36 public public schools
- 80 public preschools
- 4 private elementary schools & 27 private preschools





The Tylösand beach



## Vision Halmstad 2020



Halmstad – Hometown

A municipality where people can meet – in safety, with respect and love.



Halmstad – The city of knowledge

A place where people grow – through education, enterprise and new thinking.



Halmstad – The city for experiences

An atmosphere that gives a lust for life – through activities, a community spirit and a quality of life.



# How are the preschool and school steered?

- ∞ A goal steered system with a high degree of local responsibility.
- ∞ The main responsibility lies with the municipalities and the organisers of independent schools and schools.
- ∞ The Swedish Riksdag and the government draw up the overall national goals in:
  - The Education Act
  - The curricula

# Grading scale

In the compulsory school for learning disabilities, grades are only awarded if the pupil, or the pupil's guardian requests this.

F or a (–) dash are not used in the compulsory school for learning disabilities.

|   |      |
|---|------|
| A | 20   |
| B | 17,5 |
| C | 15   |
| D | 12,5 |
| E | 10   |
| F | 0    |

Pass level



# Preschool

- New as a school form for children aged 1-6 years.
- Voluntary, general preschool from the age of 3, or from the age of 1 if this is needed because of parents' work or studies or the child's own needs.
- Should "stimulate the child's development and learning, and also provide a secure care environment."

# Preschool class

- Voluntary school form, free of charge for children aged six.
- Covers a minimum of 525 hours per school year.
- Should "stimulate pupils' development and learning and prepare them for further education."
- Combines the working approaches and methods of the preschool and school.

# Compulsory school education

- Compulsory school attendance starts when the child reaches the age of seven.
- Compulsory school attendance is the norm in compulsory school.
- Compulsory schools are run by municipal or private organisers.

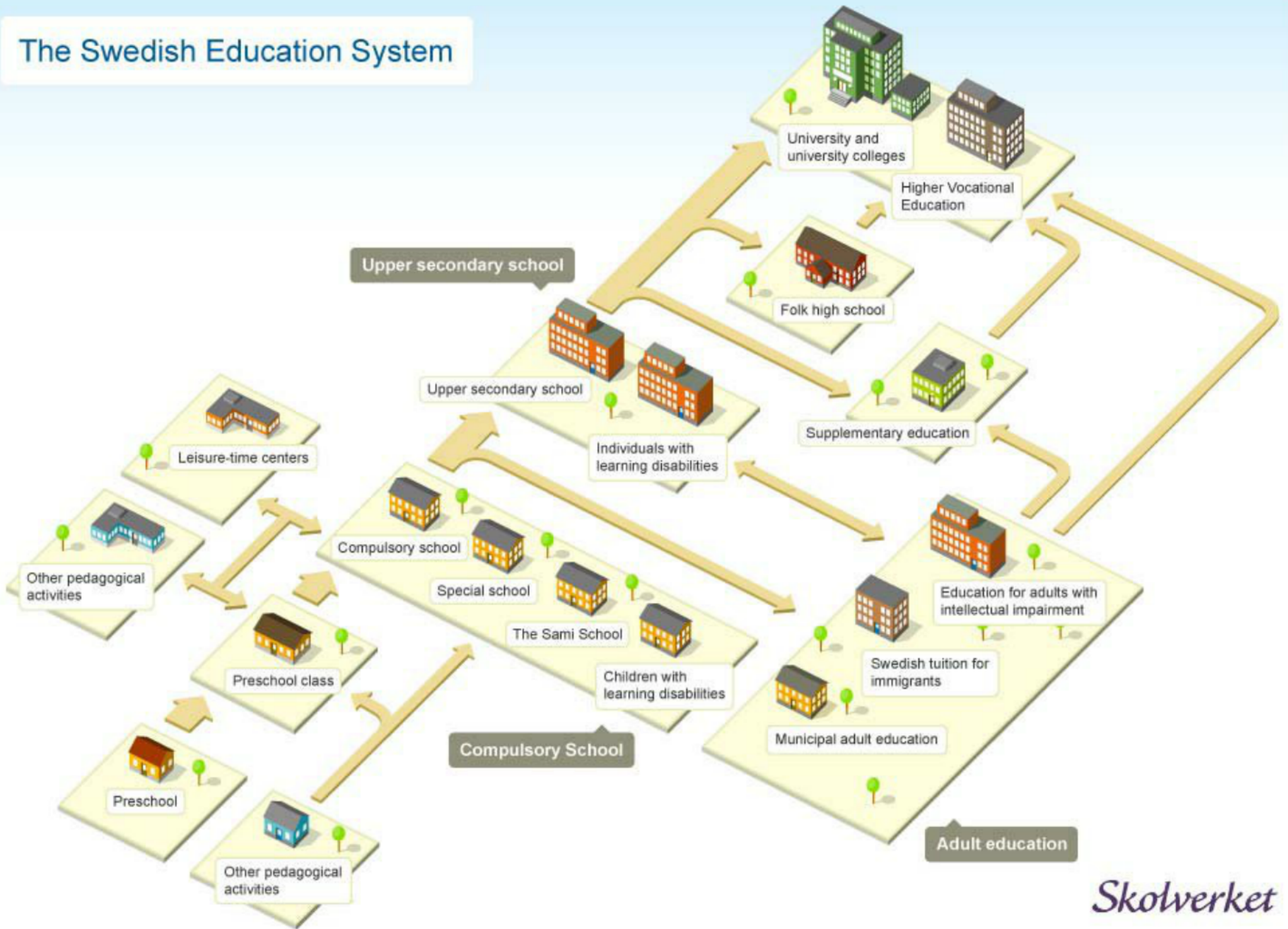
# Leisure-time centres

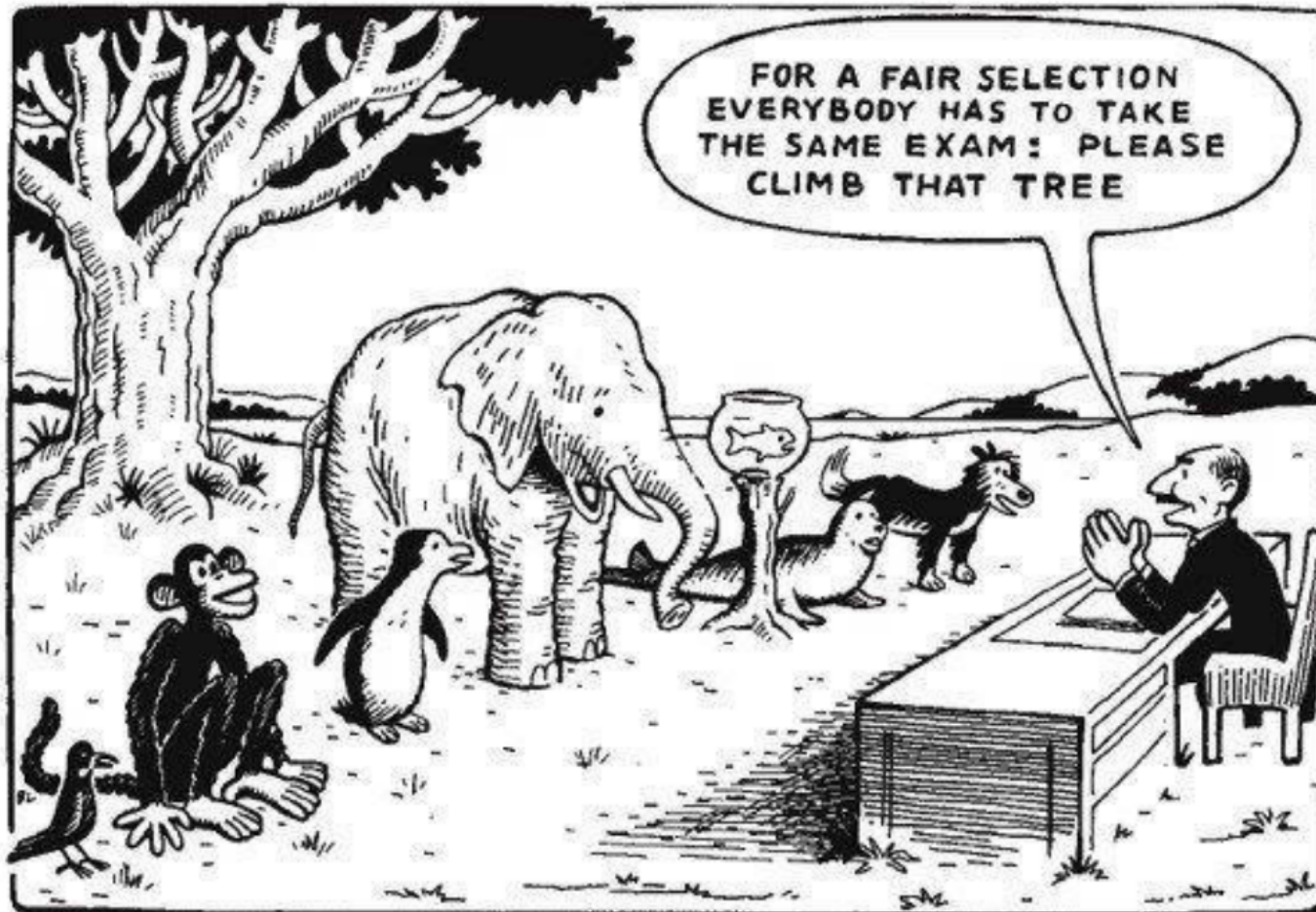
- Supplements the school for pupils aged between 6-13 years.
- Should "stimulate pupils' development and also provide them with meaningful recreational activities."
- "... to the extent needed with regard to parents' work or studies, or the pupil's own needs."

# The upper secondary school

- All pupils who have completed compulsory schooling are offered upper secondary education by their home municipality.
- The right to start an upper secondary education applies to students up to the age of 20.
- The upper secondary school is free of charge and voluntary.
- Starting upper secondary school means that students accept the rules governing absenteeism and participation in the education.

# The Swedish Education System





"Everybody is a genius. But if you judge a fish by its ability to climb a tree, it will live its whole life believing it's stupid"

Albert Einstein

## Identified Needs Personalized learning

### *Teaching/Learning*

- ✓ **Increase students' motivation** to learn STEM subjects
- ✓ Applicable to **all learning styles** according to the Learning and
- ✓ Provide with **creative, collaborative and motivating solutions for STEM education** based on actively engaging students.
- ✓ Create **more 1 to 1 meetings between teacher and student** in the classroom.
- ✓ Reduce **teachers planning hours**.

### *Assessment*

- ✓ **Provide students with a personalised formative feedback and scaffolding**, based on their learning paths, needs and styles.

### *Technical issues*

- ✓ Applicable to **all devices** (responsive design for computers, mobile phones, tablets...), our PLE solution should be a tool that can be easily used from the students' personal devices as well.

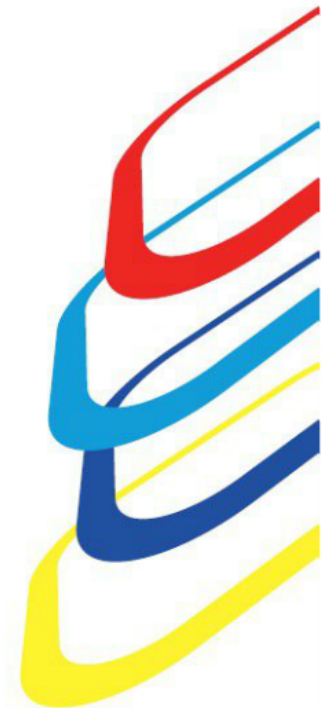


## IMAILE in a nutshell

---

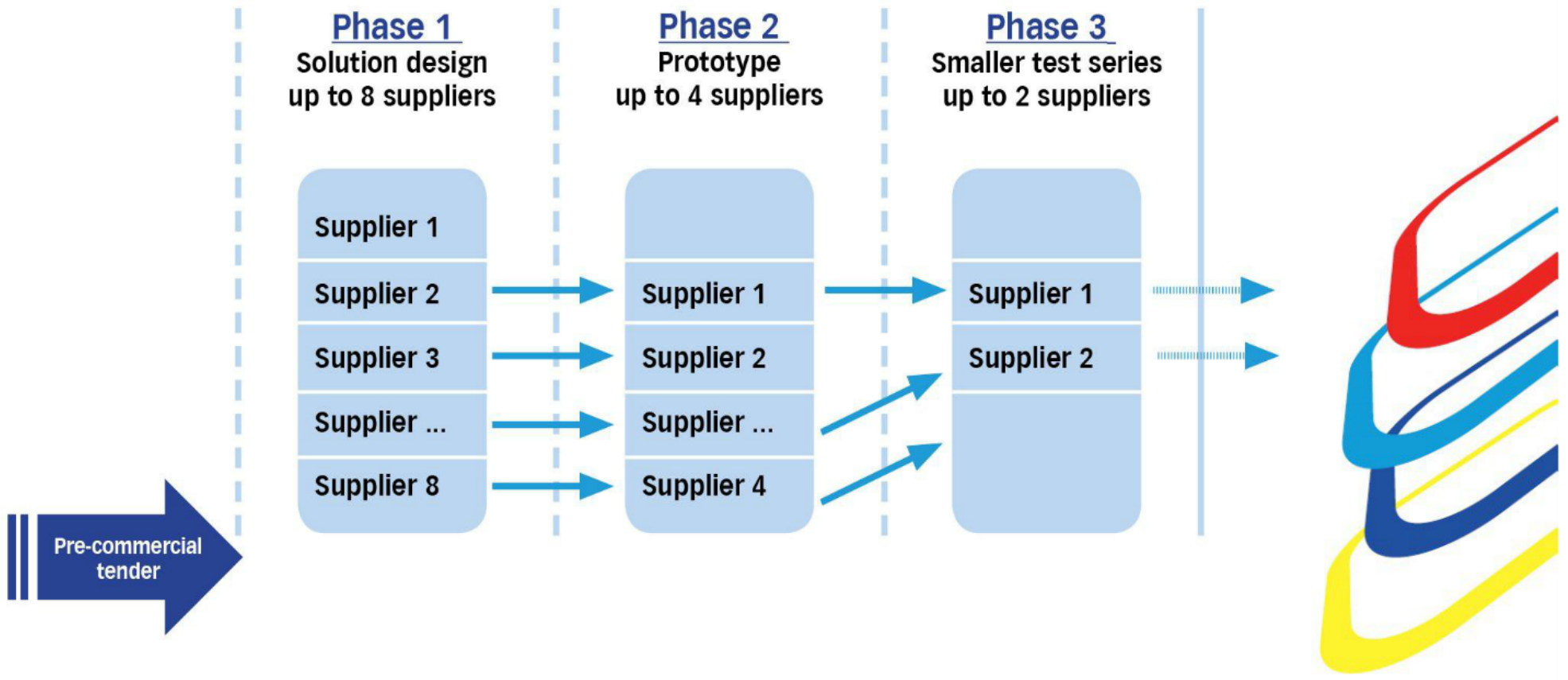


- 10 partners in 7 countries
- 4 partners Buyers Group ( Se, Fi, De, Es)
- Support organisations PCP, ICT and Dissemination
- First **PCP (Pre-commercial Procurement)** of Education at EU level
- Total budget 5.5 million euro, budget for suppliers 3.8 million euro
- Challenge - increased demand of personalised learning



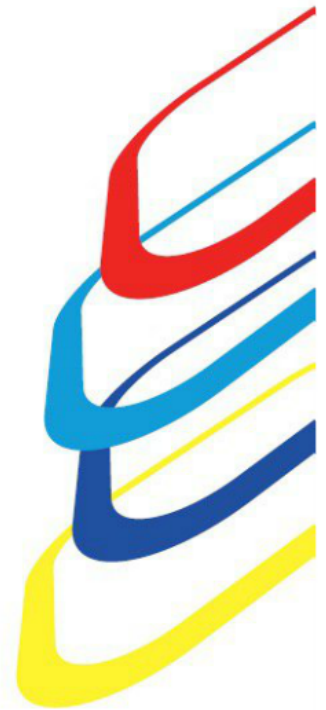
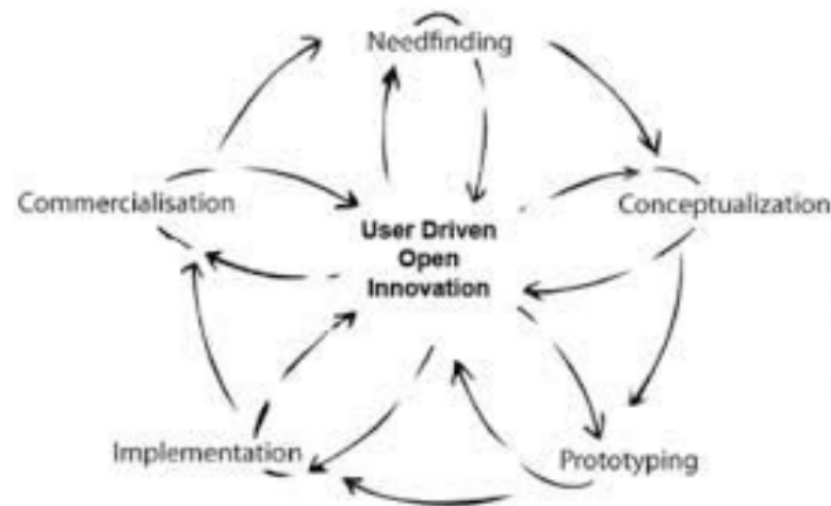
# IMAILE Pre-commercial Procurement (PCP)

Developing RTD of personalized STEM learning



## PCP Step by Step

- I. Common identified challenge
- II. Prestudy need and market ( proposal)
- III. Approved project
- IV. Need and market analysis in depth
- V. **Verification of State of the Art/ Market consultation**
- VI. Joint PCP call for tenders
- VII. PCP 3 stages
- VIII. Result 2 - 3 innovative solutions meeting the Challenge and needs



# New school of Söndrum



Profile on ICT (1- 1 projects, flipped classroom.) and international cooperation with all Europe as well as with Maine (USA) doing 1 – 1 successful implementation projects.



# Facts

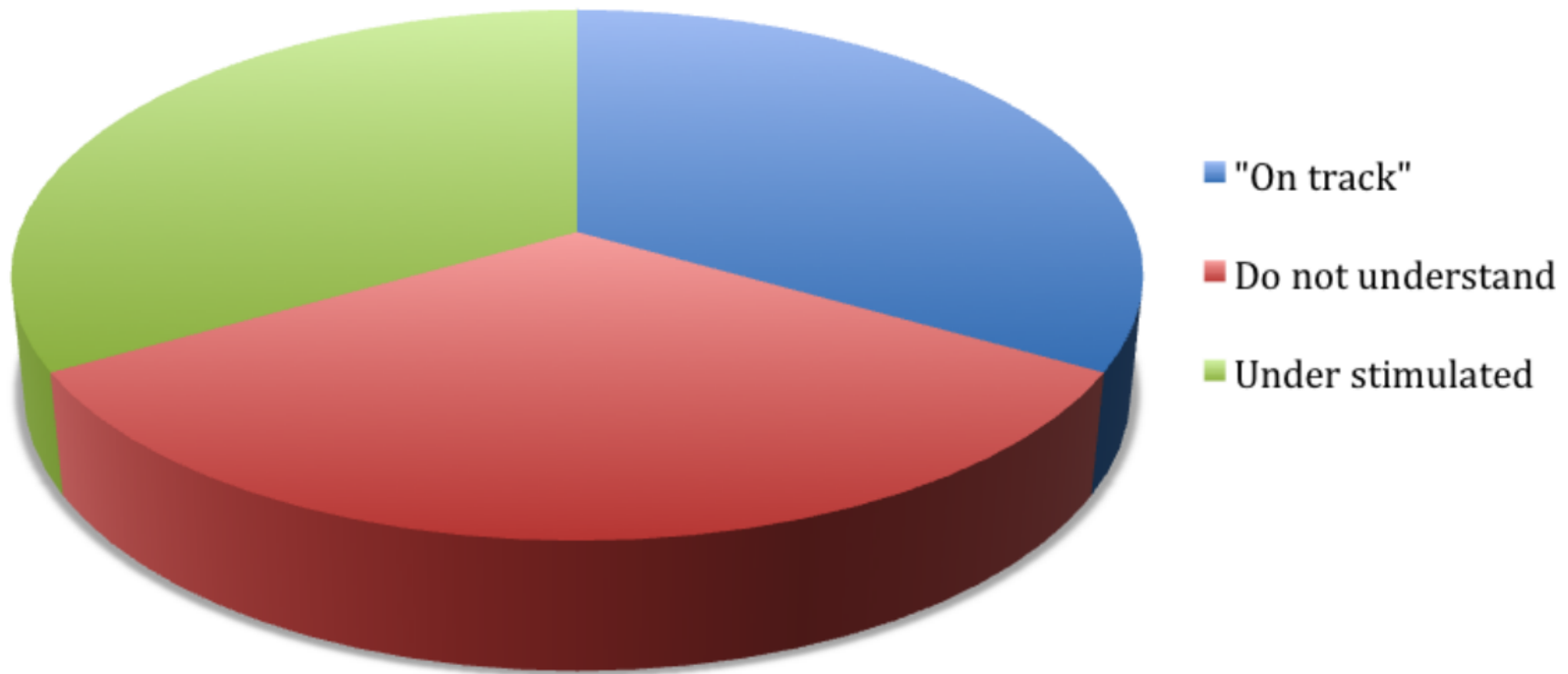
- About 20-25 % of all students have some sort of language, reading and/or writing difficulties.
- Many students experience academic failure as early as in 1st grade.
- Students that have learning difficulties in 2nd grade almost always show large difficulties even in 9th grade.
- Why is it this way when they are identified as early as they are?

# Sweden and PISA

- The Swedish results in both PISA and PIRLS have continuously declined since 2001. From being one of the top countries we are now below the average of the OECD countries.
- The results show large differences between boys and girls in mathematics, science and literacy favoring girls.
- The largest difference concerns literacy. The poor readers are increasing and the good readers are becoming fewer.

# Traditional teaching challenges only 1/3 of the students

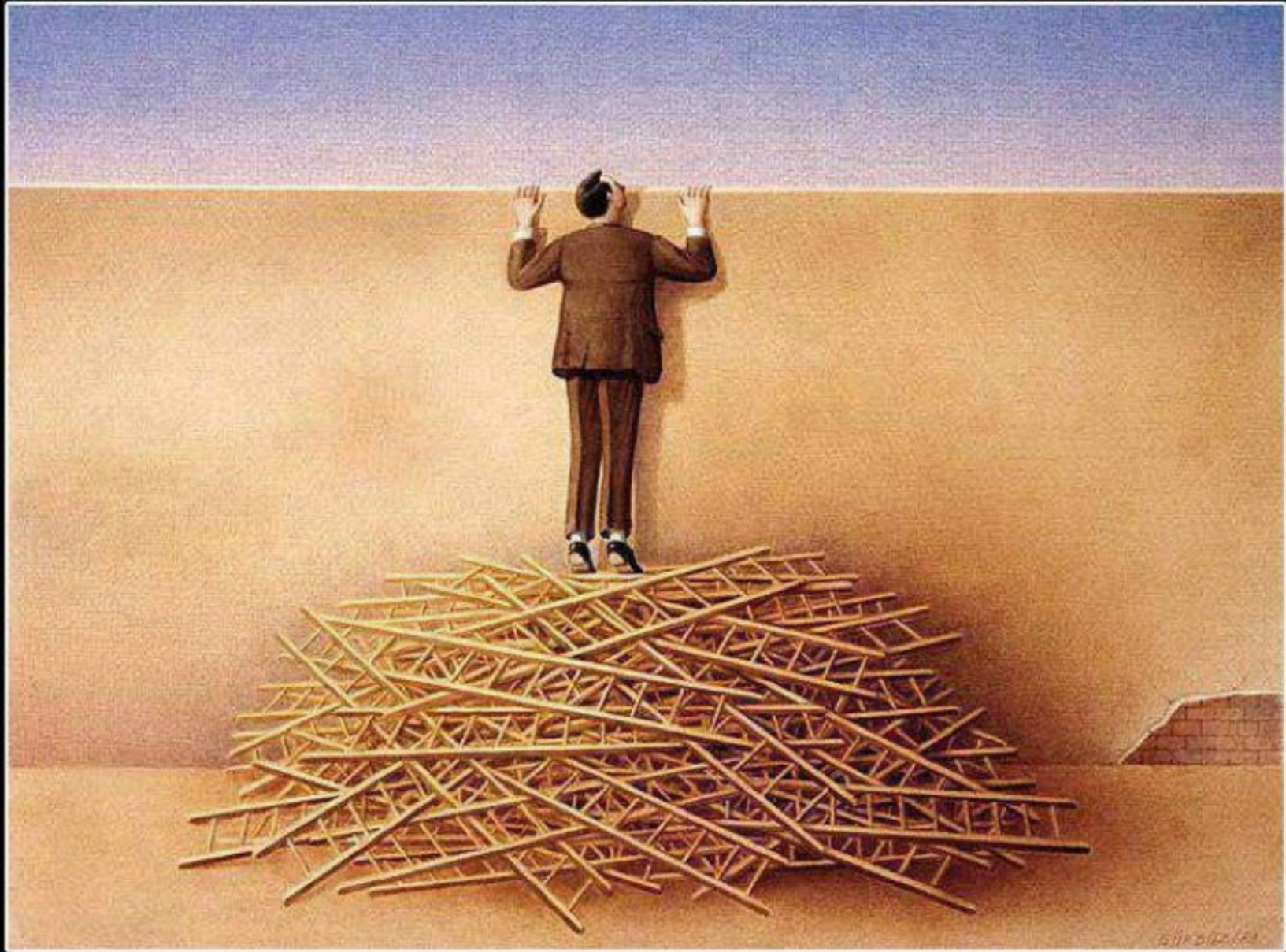
**Traditional teaching**



# Project funded by the National Department of Special educational needs

- A local project connected to Imaile
- Project name: Personal Learning environment - learning through collaboration and sharing
- Three different classrooms in three different schools

It doesn't matter how many "resources" you have.



If you don't know how to use them,  
it will never be enough.



# Purpose of the project

- Create and customize individual personal learning environment with the support of ICT and special educational strategies in where all students are allowed to work and succeed according to their own prerequisites.
- Most important is also an accessible classroom where the students feel that they all can take an equal part.

# Resource center Kärnhuset

- A supporting function consisting of psychologists, speech therapists, special ed teachers, ICT support, native language teachers, educational material etc
- Offering support through consultations, coaching, observations, assessment and intervention
- School development issues



# Project group from Kärnhuset

Consisting of:

- ICT educators
- Speech and language therapist
- Language, reading and writing consultant
- Equality developer
- School developer with teaching experience

# Expectations and goals

- Develop an approach where ICT can support different perspectives of learning and pedagogy
- Enhance the quality and accessibility of education in the classroom
- Spreading and sharing learning examples both within and outside of our organization
- Develop collaboration, methods and models to reinforce the roll of the special ed's teacher

# IMAILE

A bridge to collaboration for future innovations



# Thank you!



patrik.engstrom@halmstad.se



<http://imaile.eu>



@jokristensson



johanna.kristensson@halmstad.se



<http://logopedeniskolan.se>