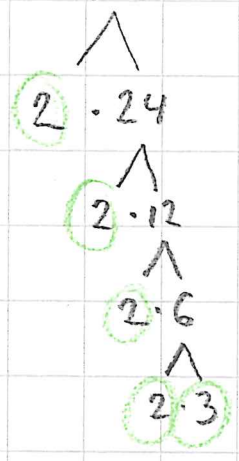
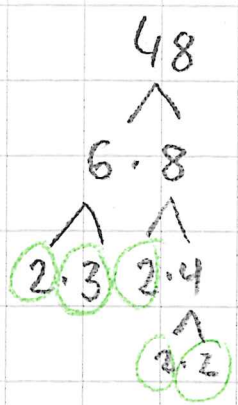
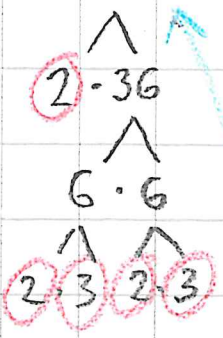


5.27 (119)

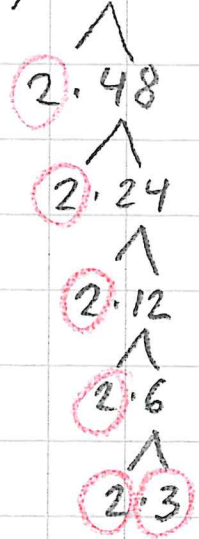
a) $48 = 2 \cdot 2 \cdot 2 \cdot 2 \cdot 3$



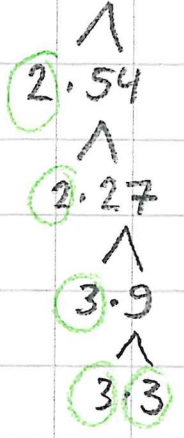
b) $72 = 2 \cdot 2 \cdot 2 \cdot 3 \cdot 3$



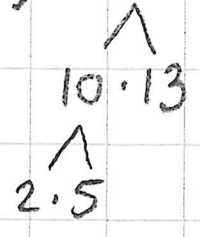
c) $96 = 2 \cdot 2 \cdot 2 \cdot 2 \cdot 2 \cdot 3$



d) $108 = 2 \cdot 2 \cdot 3 \cdot 3 \cdot 3$



e) $130 = 2 \cdot 5 \cdot 13$



f) $144 = 2 \cdot 2 \cdot 2 \cdot 3 \cdot 3$

