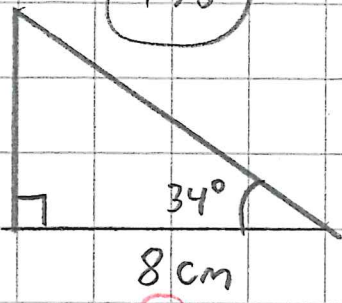


5.56

198

(a) x



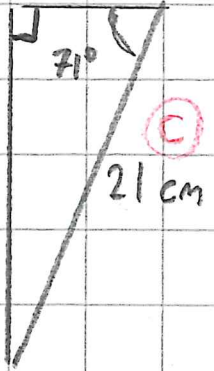
$$\tan 34^\circ = \frac{x}{8}$$

$$\approx 0,675 = \frac{x}{8} \quad || \cdot 8$$

$$0,675 \cdot 8 = x$$

$$x = 5,4 \text{ cm}$$

(b) x



$$\cos 71^\circ = \frac{x}{21}$$

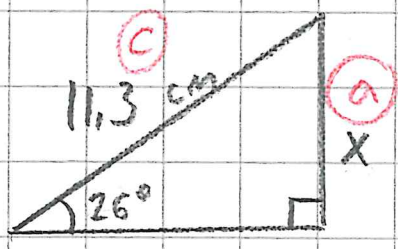
$$\approx 0,326 = \frac{x}{21} \quad || \cdot 21$$

$$0,326 \cdot 21 = x$$

$$x = 6,846$$

$$x \approx 6,8 \text{ cm}$$

(c)



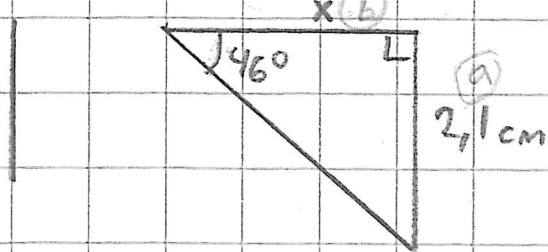
$$\sin 26 = \frac{x}{11,3}$$

$$\approx 0,438 = \frac{x}{11,3} \quad || \cdot 11,3$$

$$0,438 \cdot 11,3 = x$$

$$x = 4,9494$$

$$x \approx 4,9 \text{ cm}$$



$$\tan 46^\circ = \frac{2,1}{x}$$

$$\approx 1,036 = \frac{2,1}{x} \quad || \cdot x$$

$$1,036 \cdot x = 2,1 \quad || : 1,036$$

$$x = \frac{2,1}{1,036}$$

$$x = 2,027\dots$$

$$x \approx 2,0 \text{ cm}$$

199