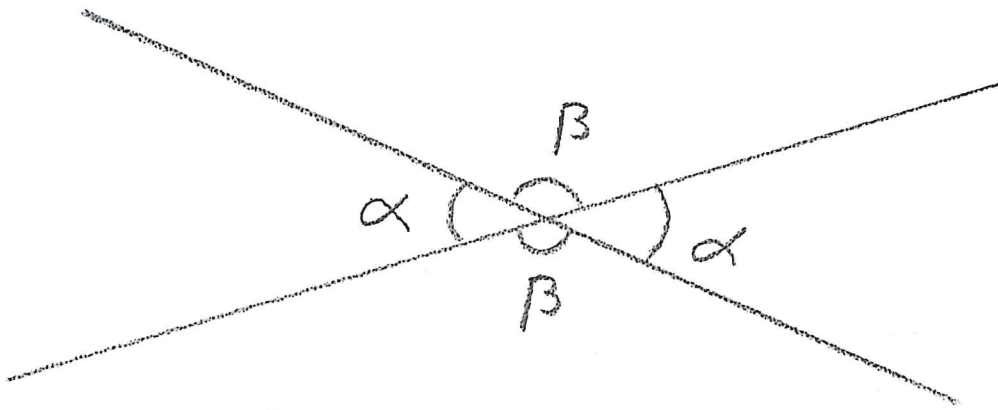
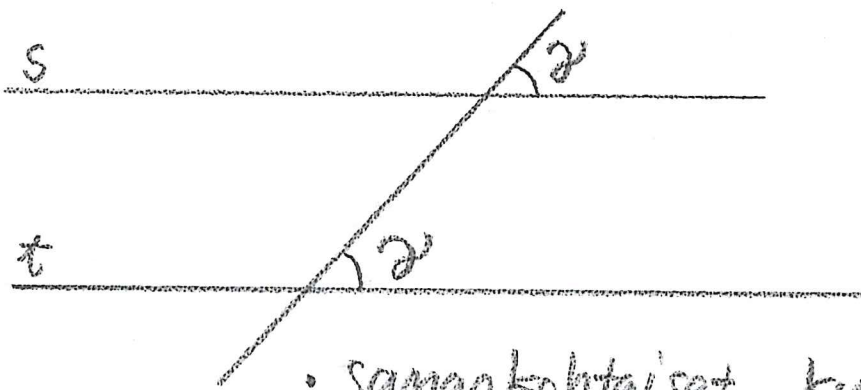


S.109



- ristikulmat ovat yhtä suuret
- vieruskulmat $\alpha + \beta = 180^\circ$



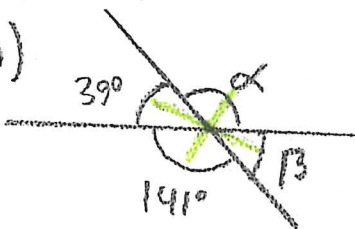
$s \parallel t$
yhdensuuntaiset

- samankohittaiset kulmat ovat yhtä suuret

S.110



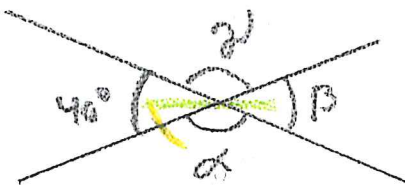
530
a)



$\alpha = 141^\circ$ (ristikulma) $\gamma = 67^\circ$
 $\beta = 39^\circ$ $\delta = 113^\circ$

531

a)



$\beta = 40^\circ$ (ristikulma)
 $\alpha = 180^\circ - 40^\circ = 140^\circ$ (vieruskulma)
 $\gamma = 140^\circ$

b) $\beta = 70^\circ$

$\alpha = 180^\circ - 70^\circ = 110^\circ$
 $\gamma = 110^\circ$

532

a)

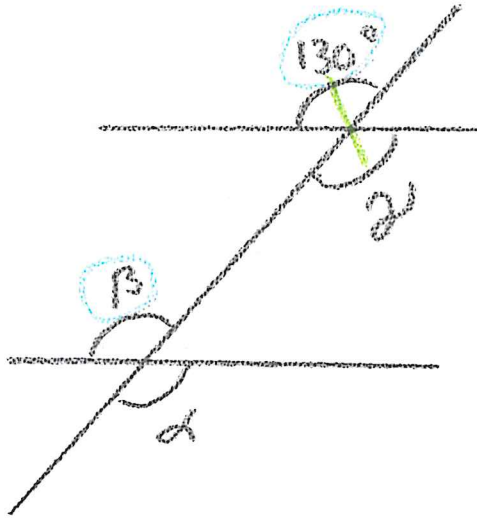


r||s

$$\alpha = 58^\circ \text{ (saman kohtainen)}$$

$$\beta = 58^\circ$$

b)

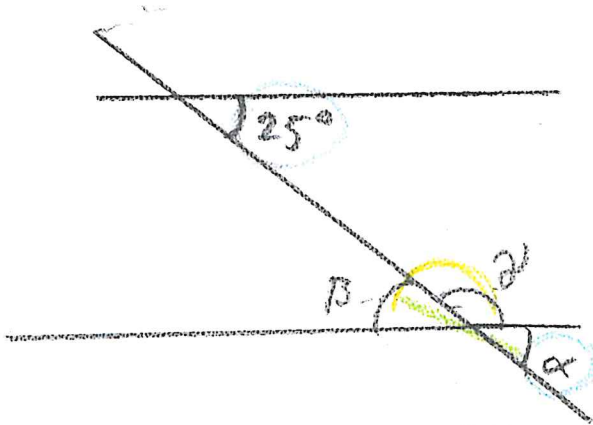


$$\gamma = 130^\circ$$

$$\beta = 130^\circ$$

$$\alpha = 130^\circ$$

c)

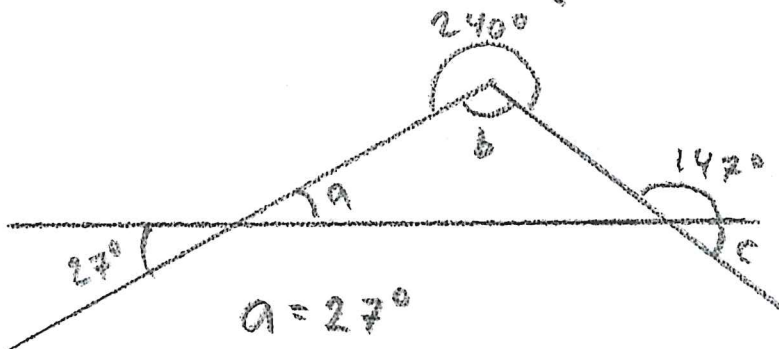


$$\alpha = 25^\circ$$

$$\beta = 25^\circ$$

$$\gamma = 180^\circ - 25^\circ = 155^\circ$$

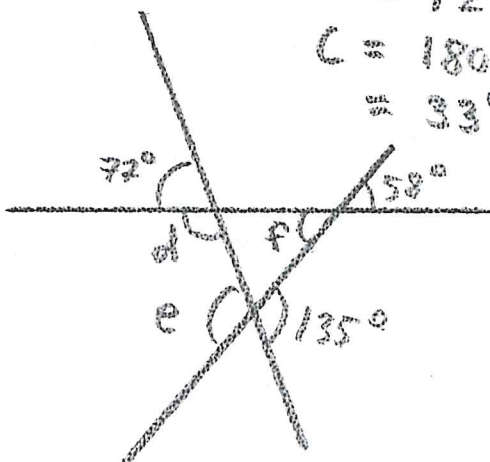
534



$$a = 27^\circ$$

$$b = 360^\circ - 240^\circ = 120^\circ$$

$$c = 180^\circ - 147^\circ = 33^\circ$$



$$d = 180^\circ - 77^\circ = 103^\circ$$

$$e = 135^\circ$$

$$f = 58^\circ$$