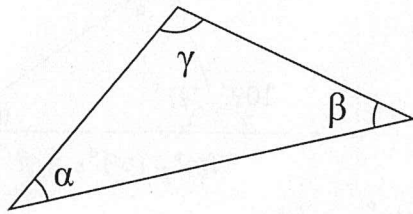
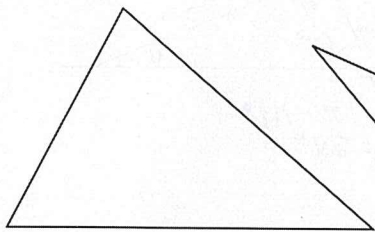


Monikulmio, jossa on kolme kulmaa, on kolmio. Kolmion kulmien summa on  $180^\circ$ .

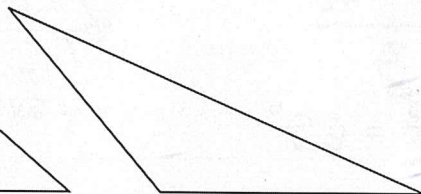


$$\alpha + \beta + \gamma = 180^\circ$$

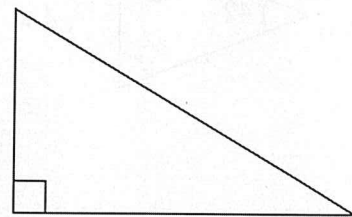
Kolmiot luokitellaan kulmien perusteella.



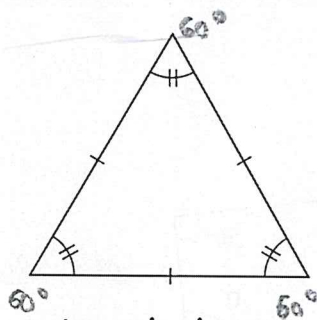
teräväkulmainen kolmio



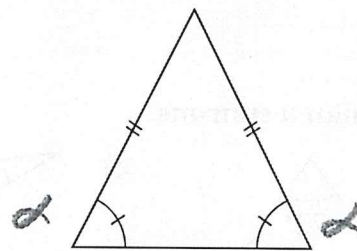
tylppäkulmainen kolmio



suorakulmainen kolmio



tasasivuinen kolmio

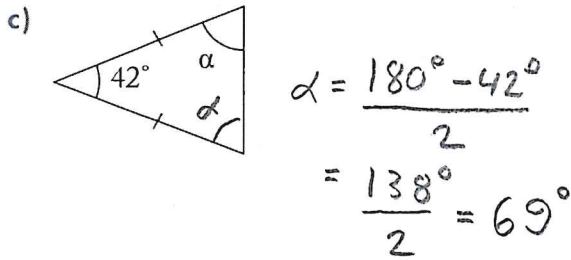
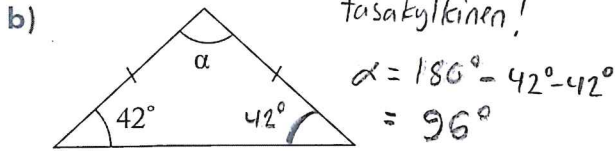
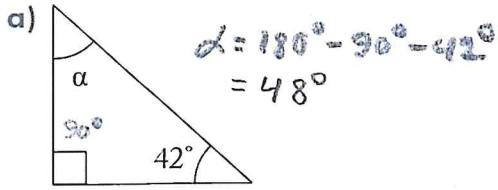


tasakylkinen kolmio

180°

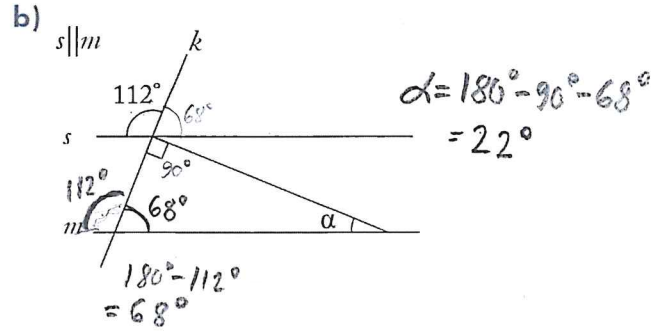
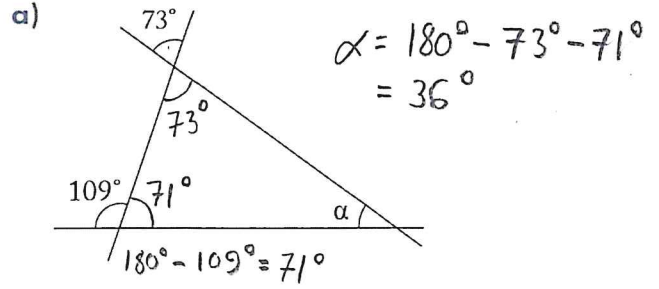
632

Laske kulman  $\alpha$  suuruus.



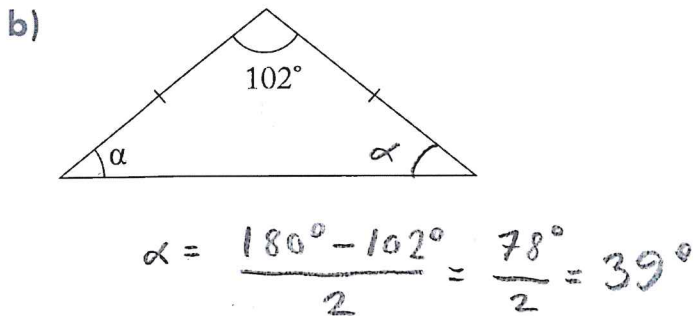
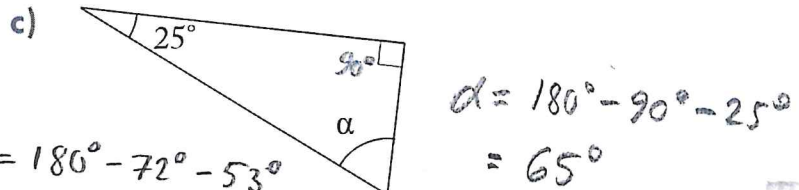
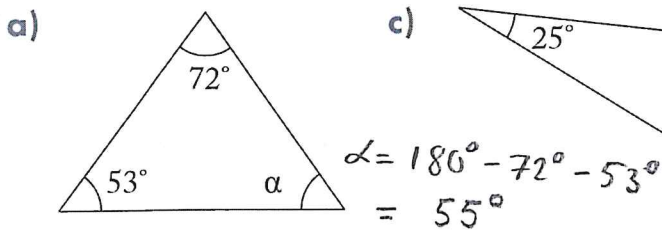
635

Laske kulman  $\alpha$  suuruus.

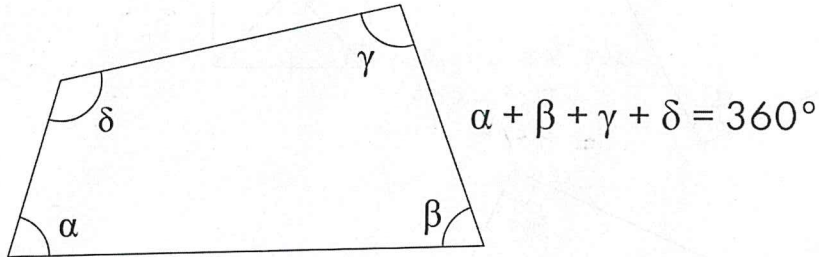


637

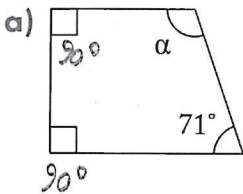
Laske kulman  $\alpha$  suuruus.



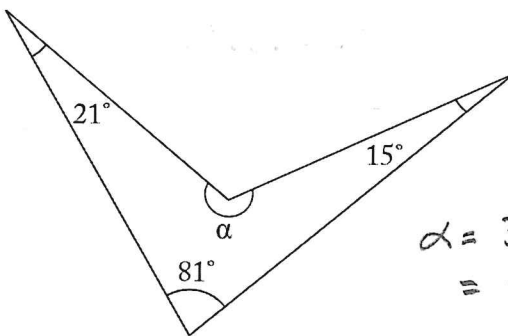
Monikulmio, jossa on neljä kulmaa, on nelikulmio. Nelikulmion kulmien summa on  $360^\circ$ .



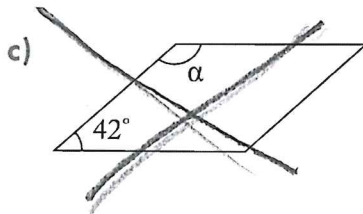
644 Laske kulman  $\alpha$  suuruus. b)



$$\alpha = 360^\circ - 90^\circ - 90^\circ - 71^\circ = 109^\circ$$

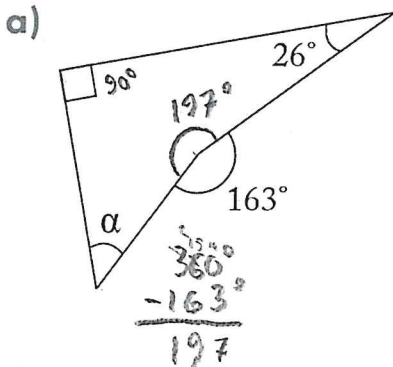


$$\alpha = 360^\circ - 81^\circ - 21^\circ - 15^\circ = 243^\circ$$

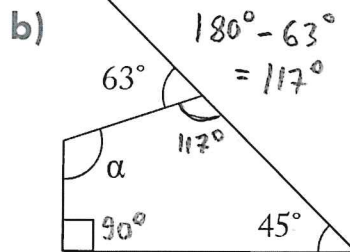


$360^\circ$

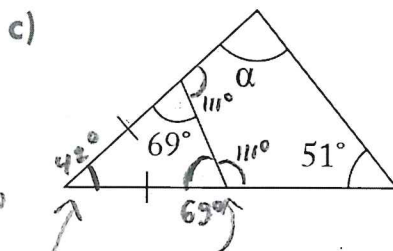
650 Laske kulman  $\alpha$  suuruus.



$$\alpha = 360^\circ - 197^\circ - 90^\circ - 26^\circ = 47^\circ$$



$$\alpha = 360^\circ - 117^\circ - 90^\circ - 45^\circ = 108^\circ$$



$$\alpha = 360^\circ - 111^\circ - 111^\circ - 51^\circ = 87^\circ$$

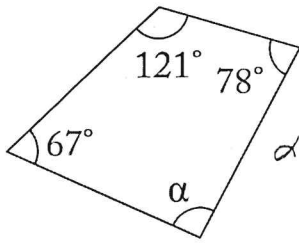
TAI

$$\alpha = 180^\circ - 51^\circ - 42^\circ = 87^\circ$$

652

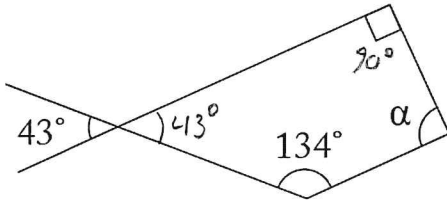
Laske kulman  $\alpha$  suuruus.

a)



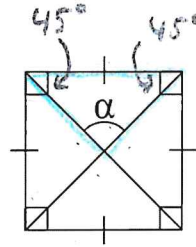
$$\begin{aligned} \alpha &= 360^\circ - 121^\circ \\ &\quad - 78^\circ - 67^\circ \\ &= 94^\circ \end{aligned}$$

b)



$$\begin{aligned} \alpha &= 360^\circ - 134^\circ - 90^\circ - 43^\circ \\ &= 93^\circ \end{aligned}$$

c)



$$\begin{aligned} \alpha &= 180^\circ - 45^\circ - 45^\circ \\ &= 90^\circ \end{aligned}$$