

s. 108 t. 526

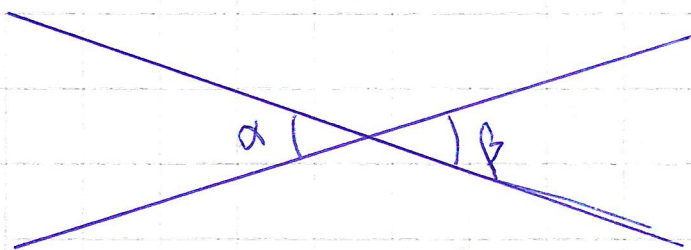
$$a) 180^\circ - 113^\circ = 67^\circ$$

$$b) 180^\circ - 90^\circ - 60^\circ = 30^\circ$$

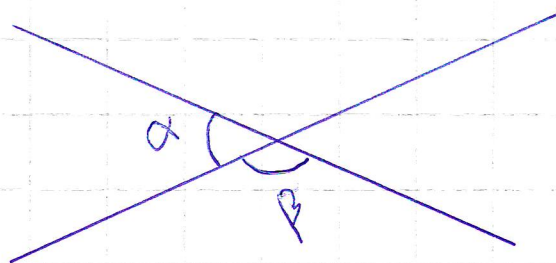
$$c) \alpha = 180^\circ - 25^\circ = 155^\circ$$

$$\beta = 180^\circ - 127^\circ = 53^\circ$$

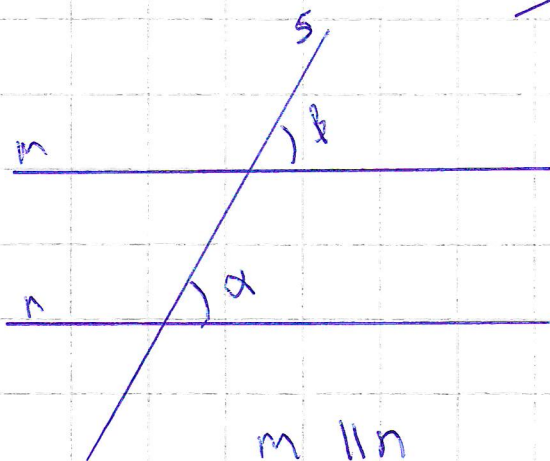
Suoria ja kulmia s. 109



ristikulmat
 $\alpha = \beta$



vieruskulmat
 $\alpha + \beta = 180^\circ$

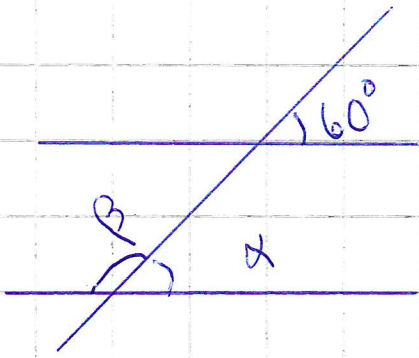


$m \parallel n$

$$\alpha = \beta$$

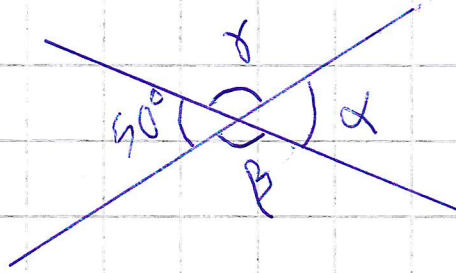
samankohtaiset
kulmat

α alfa β beeta γ gamma



$$\alpha = 60^\circ$$

$$\beta = 160^\circ - 60^\circ \\ = 120^\circ$$



$$\alpha = 50^\circ$$

$$\beta = 180^\circ - 50^\circ = 130^\circ \\ \gamma = 130^\circ$$

s. 110 t. 530, 531, 532, 533, 534, 537, 540
Vastaukset s. 124

Kotitehtävät: s. 111 t. 541, 542