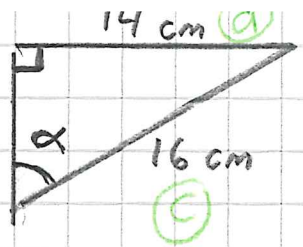


5.61

236

5.62

a)



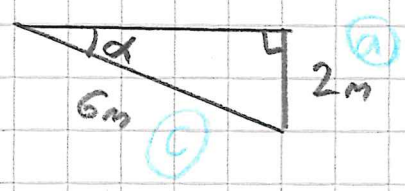
$$\sin \alpha = \frac{14}{16}$$

$$\sin \alpha = 0,875$$

$$\alpha \approx 61^\circ$$

LASKIN: \sin^{-1} 0,875
SHIFT SIN

b)



$$\sin \alpha = \frac{2}{6}$$

$$\sin \alpha \approx 0,333$$

$$\alpha \approx 19^\circ$$

c)

$$\tan \alpha = \frac{8}{5}$$

$$\tan \alpha = 1,6$$

$$\alpha \approx 58^\circ$$

d)

$$\cos \alpha = \frac{9}{12,4}$$

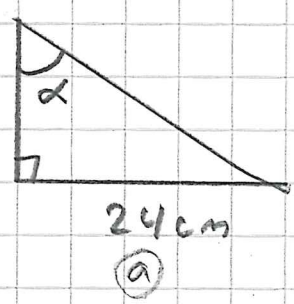
$$\cos \alpha \approx 0,726$$

$$\alpha \approx 43^\circ$$

237

(b) 10 cm

a)



$$\tan \alpha = \frac{24}{10}$$

$$\tan \alpha = 2,4$$

$$\alpha \approx 67^\circ$$

b)

$$\sin \alpha = \frac{15}{18}$$

$$\sin \alpha \approx 0,833$$

$$\alpha \approx 56^\circ$$

c)

$$\sin \alpha = \frac{2}{4,6}$$

$$\sin \alpha \approx 0,435$$

$$\alpha \approx 26^\circ$$

d)

$$\sin \alpha = \frac{2}{3,4}$$

$$\Leftrightarrow \sin \alpha \approx 0,588$$

$$\alpha \approx 36^\circ$$