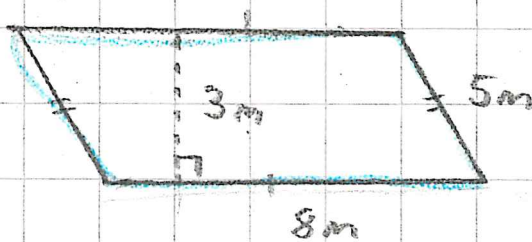


$$A = a \cdot h$$

pinta-ala = kanta · korkeus

esim.



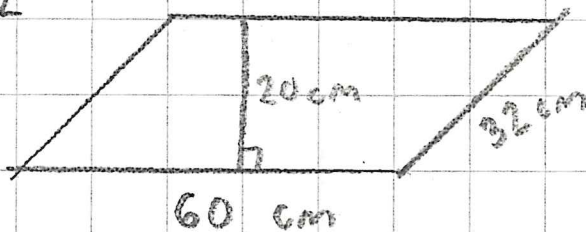
pinta-ala $A = 8m \cdot 3m = 24 m^2$

piiri $P = 8m + 5m + 8m + 5m = 26m$

672

s.132

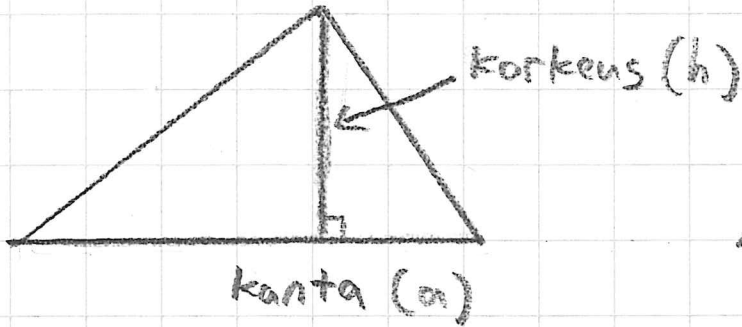
c) pinta-ala ja piiri



$$A = 60 \text{ cm} \cdot 20 \text{ cm} = 1200 \text{ cm}^2$$

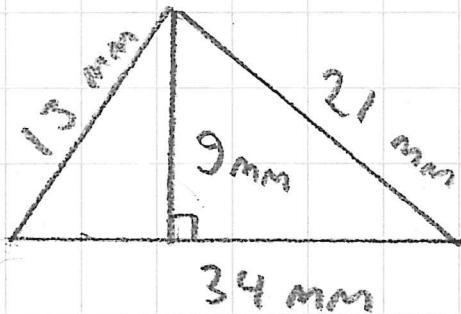
$$P = 60 \text{ cm} + 32 \text{ cm} + 60 \text{ cm} + 32 \text{ cm} = 184 \text{ cm}$$

Kolmio



$$A = \frac{a \cdot h}{2}$$

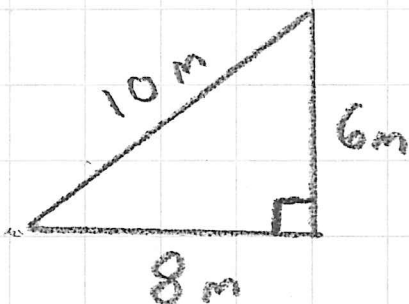
esim.



$$\begin{aligned} A &= \frac{34 \text{ mm} \cdot 9 \text{ mm}}{2} \\ &= \frac{306 \text{ mm}^2}{2} = 153 \text{ mm}^2 \end{aligned}$$

$$\begin{aligned} p &= 34 \text{ mm} + 21 \text{ mm} + 13 \text{ mm} \\ &= 68 \text{ mm} \end{aligned}$$

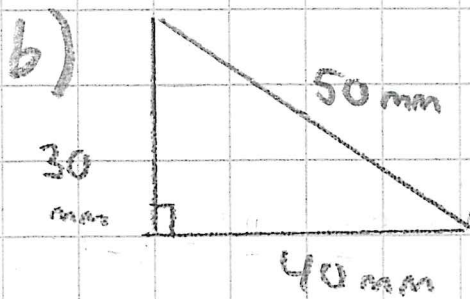
esim.



$$\begin{aligned} A &= \frac{8 \text{ m} \cdot 6 \text{ m}}{2} \\ &= \frac{48 \text{ m}^2}{2} = 24 \text{ m}^2 \end{aligned}$$

$$p = 8 \text{ m} + 6 \text{ m} + 10 \text{ m} = 24 \text{ m}$$

672 B, D

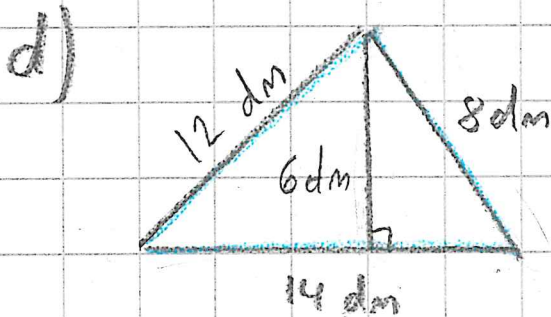


$$A = \frac{40 \text{ mm} \cdot 30 \text{ mm}}{2}$$

$$= \frac{1200 \text{ mm}^2}{2} = 600 \text{ mm}^2$$

$$p = 40 \text{ mm} + 30 \text{ mm} + 50 \text{ mm}$$

$$= 120 \text{ mm}$$



$$A = \frac{14 \text{ dm} \cdot 6 \text{ dm}}{2}$$

$$= \frac{84 \text{ dm}^2}{2} = 42 \text{ dm}^2$$

$$p = 14 \text{ dm} + 8 \text{ dm} + 12 \text{ dm}$$

$$= 34 \text{ dm}$$

683

684

S.134