

676

677 b

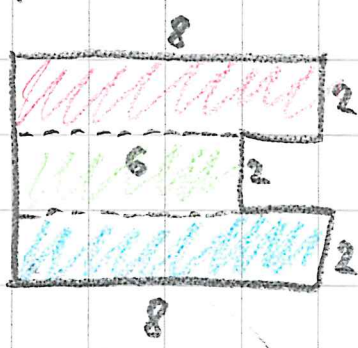
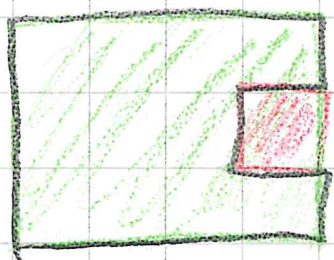
679

682

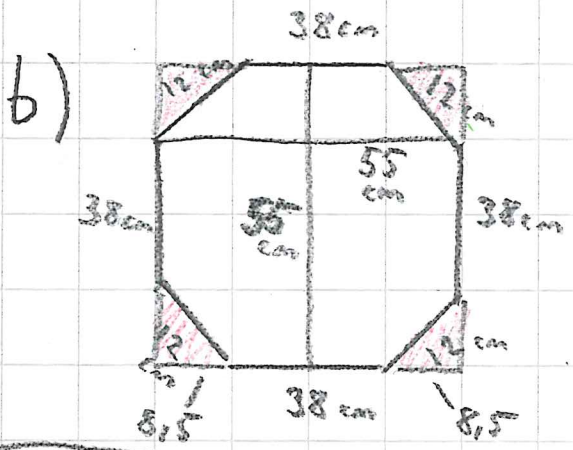


$$p = 6m + 8m + 2m + 2m + 2m + 2m + 2m + 8m = 32m$$

$$A = 6m \cdot 8m - 2m \cdot 2m = 48m^2 - 4m^2 = 44m^2$$

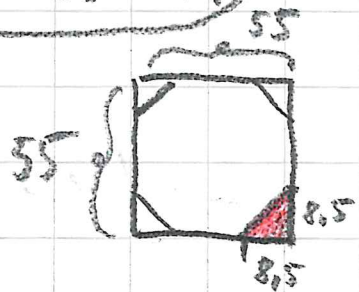


$$A = 8m \cdot 2m + 6m \cdot 2m + 8m \cdot 2m = 16m^2 + 12m^2 + 16m^2 = 44m^2$$



$$p = 4 \cdot 38cm + 4 \cdot 12cm = 152cm + 48cm = 200cm$$

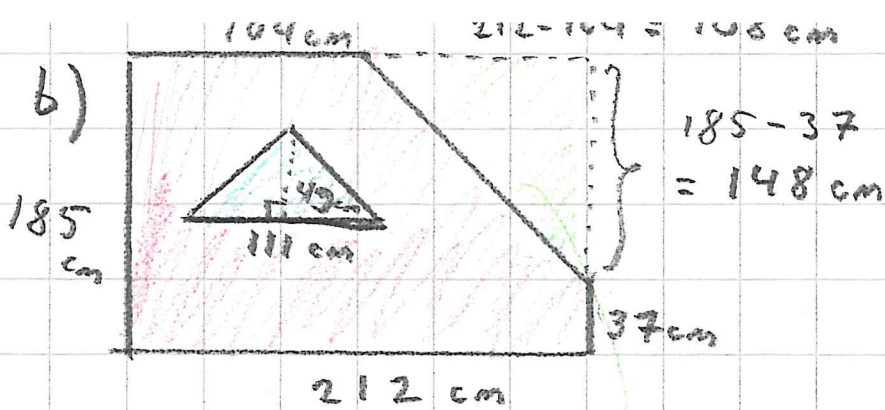
$$55 - 38 = 17$$



$$A = 55cm \cdot 55cm - \frac{8,5 \cdot 8,5}{2} \cdot 4 = 3025cm^2 - 144,5cm^2 = 2880,5cm^2$$

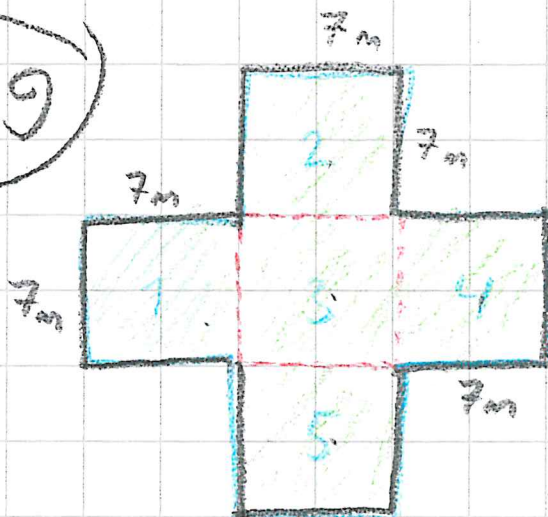
677

b)



$$\begin{aligned}
 A &= \frac{212 \cdot 185}{\text{cm}} - \frac{148 \text{ cm} \cdot 108 \text{ cm}}{2} - \frac{111 \text{ cm} \cdot 49 \text{ cm}}{2} \\
 &= 39\,220 \text{ cm}^2 - 7992 \text{ cm}^2 - 2719,5 \text{ cm}^2 \\
 &= 28\,508,5 \text{ cm}^2 \text{ (m}^2\text{)} \\
 &= 2,85085 \text{ m}^2 \\
 &\approx 2,9 \text{ m}^2
 \end{aligned}$$

679



$$\begin{aligned}
 a) \quad p &= 7 \text{ m} \cdot 12 \\
 &= 84 \text{ m}
 \end{aligned}$$

$$\begin{aligned}
 b) \quad A &= 7 \text{ m} \cdot 7 \text{ m} \cdot 5 \\
 &= 49 \text{ m}^2 \cdot 5 \\
 &= 245 \text{ m}^2
 \end{aligned}$$

685

S. 134

B