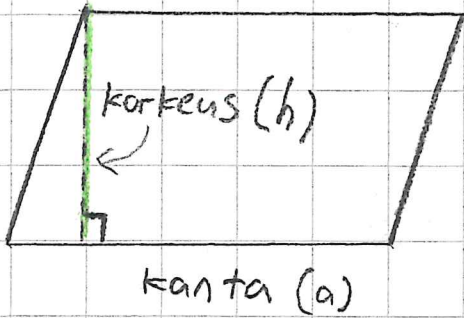


(s.129) Suunnikas

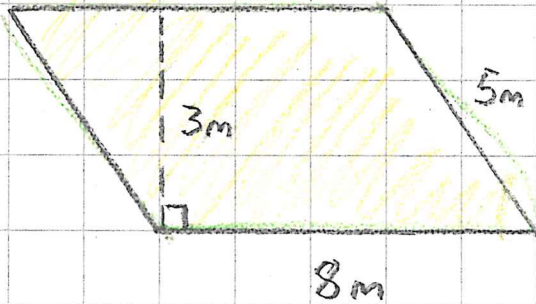


pinta-ala

$$A = a \cdot h$$

(kanta · korkeus)

esim.

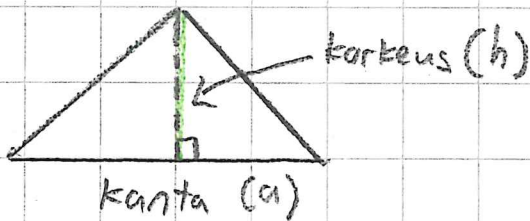


$$\begin{aligned} A &= 8\text{m} \cdot 3\text{m} \\ &= 24\text{m}^2 \end{aligned}$$

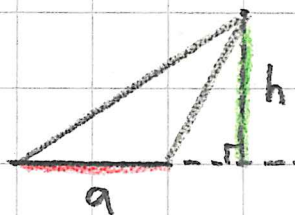
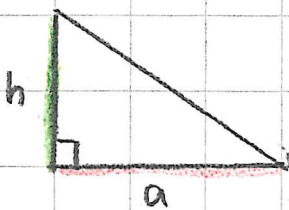
piiri?

$$\begin{aligned} p &= 8\text{m} + 5\text{m} + 8\text{m} + 5\text{m} \\ &= 26\text{m} \end{aligned}$$

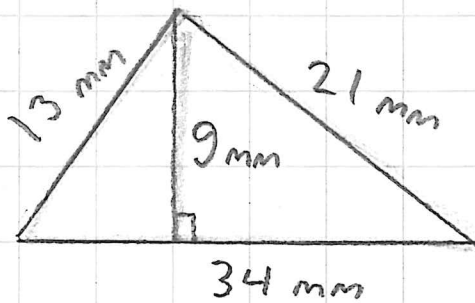
Kolmio



$$A = \frac{a \cdot h}{2}$$



esim.

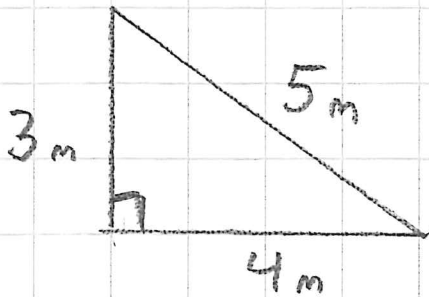


pinta-ala? $A = \frac{34 \text{ mm} \cdot 9 \text{ mm}}{2}$
 $= \frac{306 \text{ mm}^2}{2} = 153 \text{ mm}^2$

piiri?

$$p = 34 \text{ mm} + 21 \text{ mm} + 13 \text{ mm} = 68 \text{ mm}$$

esim.



$$A = \frac{3 \text{ m} \cdot 4 \text{ m}}{2} = \frac{12 \text{ m}^2}{2} = 6 \text{ m}^2$$

$$p = 5 \text{ m} + 4 \text{ m} + 3 \text{ m} = 12 \text{ m}$$

672

B, C, D

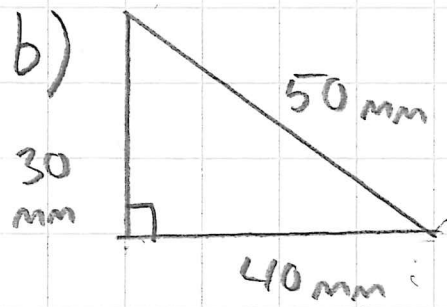
pinta-ala ja piiri!

s. 132

~~676~~

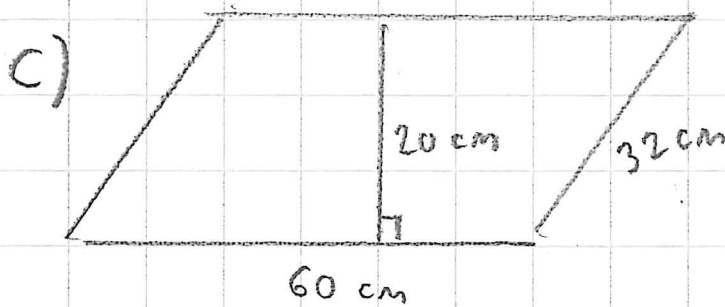
~~677~~ B

672



$$A = \frac{40 \text{ mm} \cdot 30 \text{ mm}}{2} = \frac{1200 \text{ mm}^2}{2} = 600 \text{ mm}^2$$

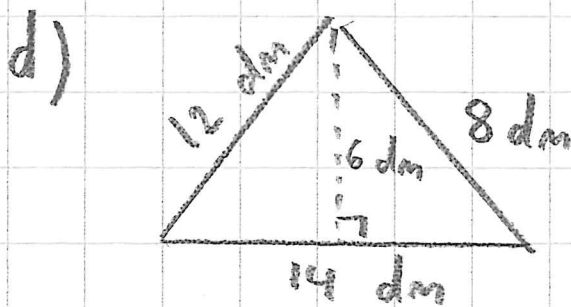
$$p = 30 \text{ mm} + 40 \text{ mm} + 50 \text{ mm} = 120 \text{ mm}$$



$$A = 60 \text{ cm} \cdot 20 \text{ cm} = 1200 \text{ cm}^2$$

~~U~~

$$p = 60 \text{ cm} + 32 \text{ cm} + 60 \text{ cm} + 32 \text{ cm} = 184 \text{ cm}$$



5.134

683

684

$$A = \frac{14 \text{ dm} \cdot 6 \text{ dm}}{2} = \frac{84 \text{ dm}^2}{2} = 42 \text{ dm}^2$$

$$p = 14 \text{ dm} + 8 \text{ dm} + 12 \text{ dm} = 34 \text{ dm}$$