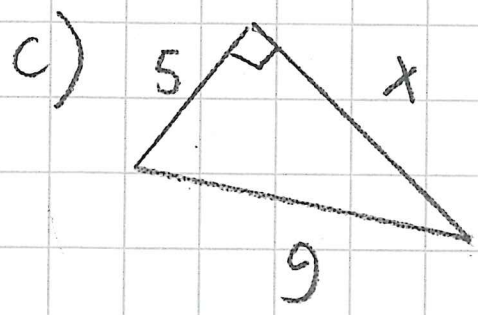


S.68

275

$$a^2 + b^2 = c^2$$



$$x^2 + 5^2 = 9^2$$

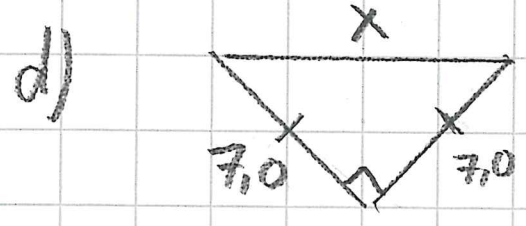
$$x^2 + 25 = 81$$

$$x^2 = 56$$

$$x = \sqrt{56}$$

$$x = 7,483...$$

$$x \approx 7$$



$$7^2 + 7^2 = x^2$$

$$49 + 49 = x^2$$

$$98 = x^2$$

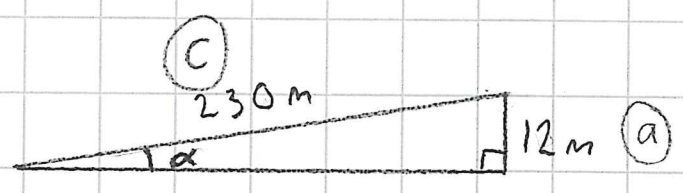
$$x = \sqrt{98}$$

$$x \approx 9,9$$

S.70

294

a)

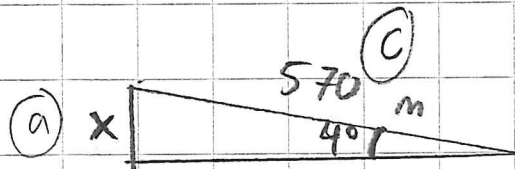


$$\sin \alpha = \frac{12}{230}$$

$$\sin \alpha = 0,052$$

$$\alpha \approx 3^\circ$$

b)



$$\sin 4^\circ = \frac{x}{570} \quad || \cdot 570$$

$$570 \cdot \sin 4^\circ = x$$

$$x = 39,76\dots$$

$$x \approx 40 \text{ m}$$