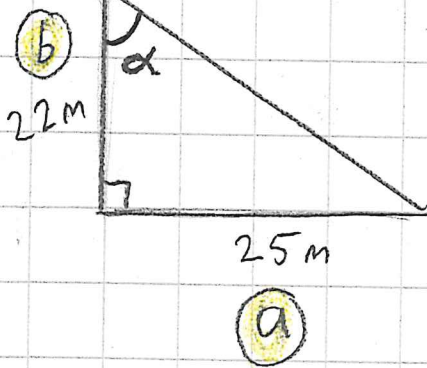


# Kulman ratkaiseminen (s.61)

esim.



$$\tan \alpha = \frac{25}{22}$$

$$\tan \alpha \approx 1,136$$

$$\alpha = 48,64...^\circ$$

$$\alpha \approx 49^\circ$$

OHJE:

$\tan^{-1}$  1,136  
SHIFT ja tan

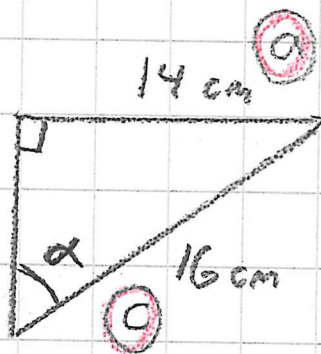
LASKIN

1,136  $\tan^{-1}$  (2nd)  
PUHELIN

236

s.62

a)



$$\sin \alpha = \frac{14}{16}$$

$$\sin \alpha = 0,875$$
$$\alpha \approx 61^\circ$$

b)



$$\sin \alpha = \frac{2}{6}$$

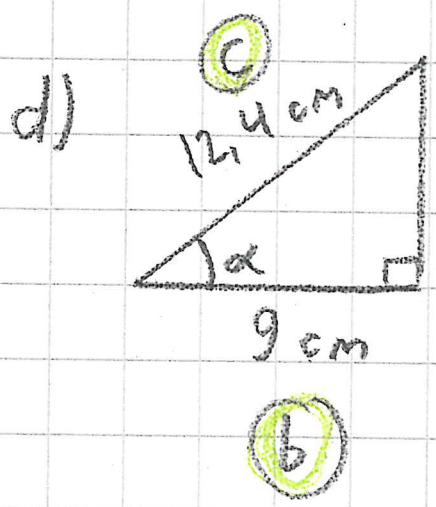
$$\sin \alpha \approx 0,333$$
$$\alpha \approx 19^\circ$$



$$\tan \alpha = \frac{8}{5}$$

$$\tan \alpha = 1,6$$

$$\alpha \approx 58^\circ$$



$$\cos \alpha = \frac{9}{12,4}$$

$$\cos \alpha \approx 0,726$$

$$\alpha \approx 43^\circ$$

200  
s.56

217  
s.58

237  
s.62

funktiet: s.51

vastaukset: s.71-72