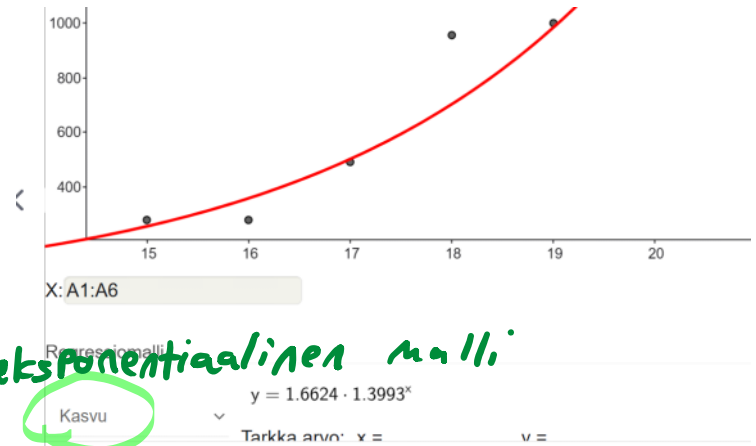
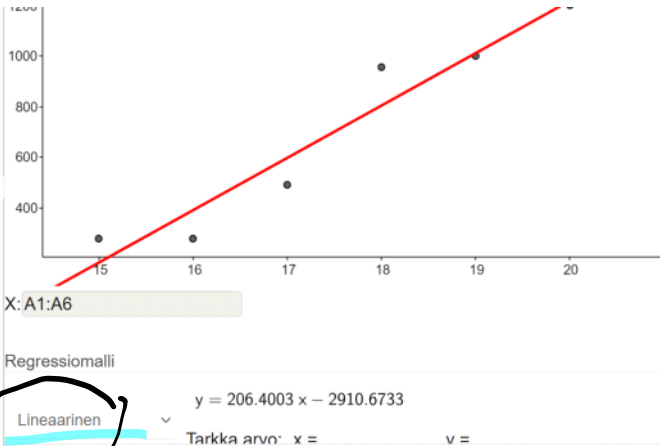


132



eksponentiaalinen malli

a)  $y = 206,4x - 2910,7$

$y = 1,66 \cdot 1,4^x$   
(kasvu 40%/vuosi)

b)  $x = 25$  (kasvu 206,4€/vuosi)

$y = 206,4 \cdot 25 - 2910,7$   
 $= 2249,3$   
 $\approx 2250 \text{ €}$

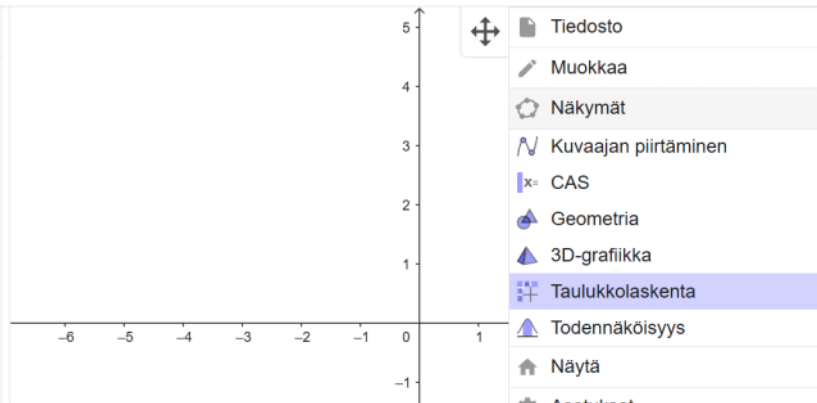
$y = 1,66 \cdot 1,4^{25}$

$1,66 \times 1,4^{25}$

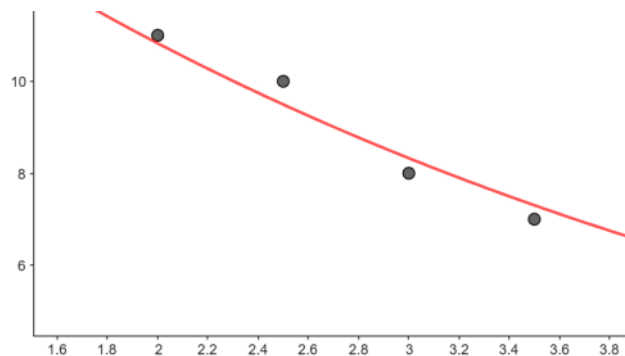
7469,80010377082993701

$\approx 7470 \text{ €}$

	A	B	C	D	E	F	G
1	2	11					
2	2.5	10					
3	3	8					
4	3.5	7					
5	4	6					
6	4.5	6					
7	5	5					
8							
9							
10							
11							
12							
13							



	A	B
1		
2		
3		
4		
5		
6	4.5	6
7	5	5
8		
9		



K: A1:A7

Regressiomalli

Regressiomalli

Kasvu

$$y = 18.3032 \cdot 0.7691^x$$

ikä 7 v.

$$X=7$$

$$y = 18,3 \cdot 0,77^x$$

$$18,3 \times 0,77^7$$

2,936879757834099

imuroidaan  
V: 3 kertaa  
viikossa.