



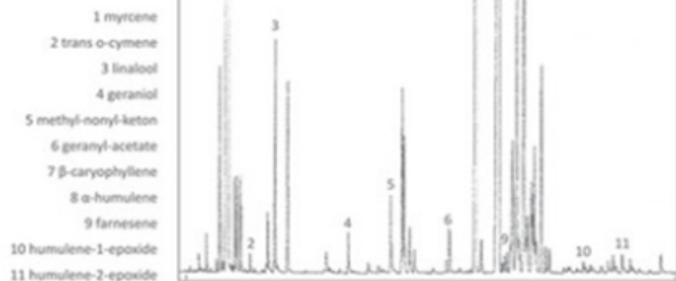
hop resins

alpha-acids (% w/w)	11,0 - 17,0	alfa-kislina (ut. %)
beta-acids (% w/w)	3,5 - 5,0	beta-kislina (ut. %)
cohumulone (% α -acids)	21 - 25	kohumulon (% α -kislina)
colupulone (% β -acids)	49 - 52	kolupulon (% β -kislina)
xanthohumul (% w/w)	0,6 - 0,8	ksantohumul (ut. %)
polyphenols (% w/w)	3,5 - 4,5	polifenoli (ut. %)

essential oils

total oil (ml/100 g hops)	2,5 - 4,0	(ml/100 g hmelja)
myrcene	50 - 60	mircen
linalool	0,7 - 0,9	linalool
β -caryophyllene	5,0 - 7,0	β -kariofilen
α -humulene	17,0 - 23,0	α -humulen
farnesene	0,1 - 0,4	farnezen

oil components gas chromatogram of hop essential oil



hmeljne smole



eterična olja

vsebnost olja
relativni % v olju

oljne komponente kromatogram eteričnega olja hmelja



Styrian Eureka
red berries, geranium, ginger, quince
jagoditvevje, geranija, ingver, kutina



Styrian Eureka

Styrian Eureka is a dual-purpose variety (bittering and aroma) bred at the Slovenian Institute of Hop Research and Brewing in Žalec from traditional Slovenian and foreign hop germplasm.

The variety is known for its good agronomic traits in hop production and processing. Depending on the type of beer, it can develop a very fine traditional hoppy aroma or pleasant flavour notes. It also provides a harmonious, medium bitterness.

Styrian Eureka je sorta z možnostjo dvojne uporabe, tako grenčične kot aromatične, požlatnje na Inštitutu za hmeljarstvo in pivovarstvo Slovenije v Žalcu iz tradicionalne slovenske in tuje hmeljne dednine.

Sorta je znana po dobrih agronomskih lastnostih za pridelavo in spravilo hmelja. V različnih tipih piva razvije zelo prijetno tradicionalno hmeljno aromo ali prijetne dišavne note. Poleg tega jo odlikuje harmonična, srednje intenzivna grenčica.

ripening time
storage stability

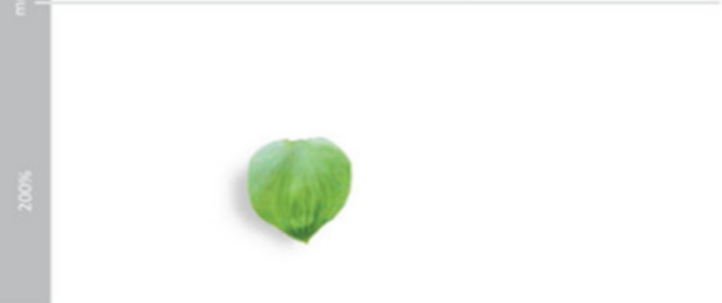
medium late
very good

tehnološka zrelost
skladiščna obstojnost

srednje pozna
zelo dobra



cone shape is medium ovate
 average cone length is 28 mm
 average weight of 100 dry cones is 20 g
 storžki so srednje ovalni
 povprečno 28 mm dolgi
 100 suhih storžkov tehta povprečno 20 g



plant shape is cylindrical to club-shaped
 main shoot is green
 oblika rastline je cilindrično kijasta
 trta je zelene barve

Disease resistance

downy mildew

primary infection low

secondary infection medium

powdery mildew medium

verticillium wilt

mild form high

lethal form medium

Odpornost na bolezni

hmeljeva peronospora

primarna okužba nizka

sekundarna okužba srednja

hmeljeva pepelovka

srednja

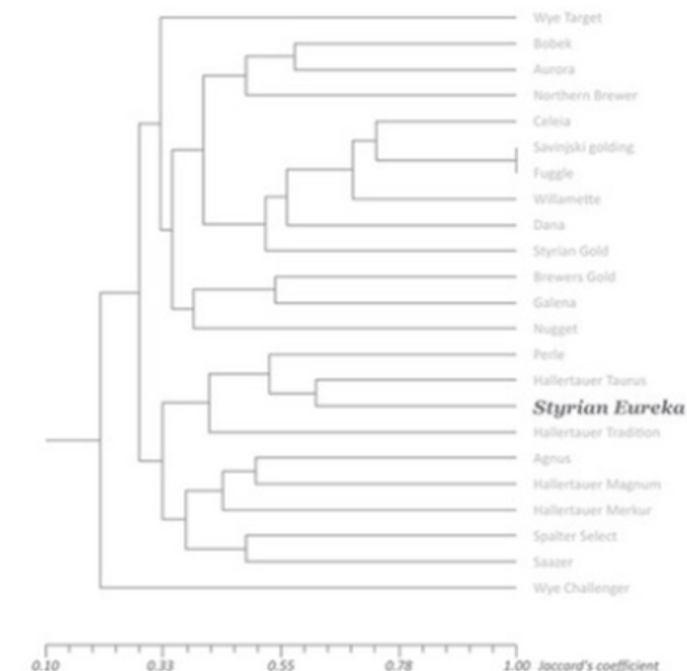
verticiljska uvelost

blaga oblika visoka

letalna oblika srednja

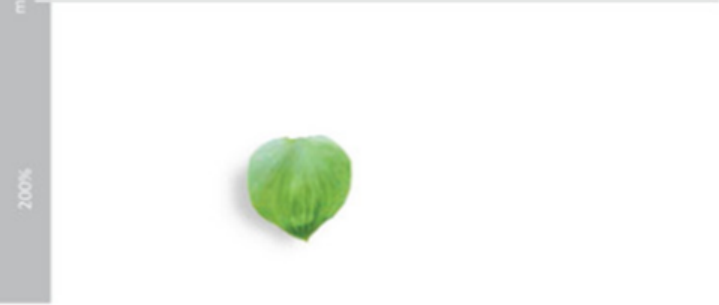
Genetic analysis

Genetska analiza





cone shape is medium ovate
 average cone length is 28 mm
 average weight of 100 dry cones is 20 g
 storžki so srednje ovalni
 povprečno 28 mm dolgi
 100 suhih storžkov tehta povprečno 20 g



plant shape is cylindrical to club-shaped
 main shoot is green
 oblika rastline je cilindrično kijasta
 trta je zelene barve

Disease resistance

downy mildew

primary infection	low
secondary infection	medium

powdery mildew

	medium
--	--------

verticillium wilt

mild form	high
lethal form	medium

Odpornost na bolezni

hmeljeva peronospora

primarna okužba	nizka
sekundarna okužba	srednja

hmeljeva pepelovka

	srednja
--	---------

verticiljska uvelost

blaga oblika	visoka
letalna oblika	srednja

Genetic analysis

Genetska analiza

